



# Fall FOUR

Fresh Heifer Exchange

**Bid Online Or On The Phone**  
**Thursday October 3, 2019 12PM to 1PM EST**

Sale Report

Holsteins \$1700-\$1675, Jerseys \$1825

Thank You to everyone that was involved in this  
exchange.



# 5 Potloads Sell in 5 Lots

## Half Load Option Available

These heifers have been selected from Crossroads Dairy, den Dulk Dairy ,Willow Point Dairy, & Sugar Lane Dairy They are well made and performing well on these large dairies. This is an great opportunity to add fall milk in volume and quality right off the dairy. All the groups selling will be on the dairy and shipped after payment & arrangements have been made.

## Videos & Bidding at [www.kreegerdairy.com](http://www.kreegerdairy.com)



Vaccination's

Springers: Triangle 10 HB, Endovac Dairy, & Eprinex

Move to Close Up: Endovac Dairy

14 DIM: Express 10 FP

Calves & Heifers Vaccinated All The Way Through



# Fall FOUR

Fresh Heifer Exchange

Thursday October 3, 2019

12:00PM to 1:00PM EST

## Bid Online Or By Phone

The Sale will be online at [www.kreegerdairy.com](http://www.kreegerdairy.com)  
There will be a spot to click the auction page to enter  
the sale site to bid and watch.

The Heifers have been sorted in to Semi Load Lots of  
36-40 Head. The buyer may determine how many  
they want on the load. Each Lot has extras in it to  
ensure the load is as perfect as possible.

Half Load Option: If the buyer would prefer 18-20 in  
a lot then they can chose the half load, The heifers in  
a half load lot will be determined by a gate cut.

Videos are online at [www.kreegerdairy.com](http://www.kreegerdairy.com)

### Sale Staff

Chad Kreeger	517-294-3484
Paul Warner	517-231-8427
Shaun Hyde	989-287-2660
Gabe Papoi	989-444-8275
Clay Papoi	517-526-1917
Dave Bennett	989-286-7244
Dave Whelen	517-403-7219
Brian Landis	574-536-5026
Kent Inniger	989-289-6594
Steve Vander Hoff	517-206-4822

Please contact any member of the sale team to place bids  
or with questions on the cattle or the sale process.

### Dairies Contact

Karl den Dulk	231-578-9579
---------------	--------------

Sale Managed By

**Kreeger**  
and Associates, LLC

Chad Kreeger 517-294-3484  
Box 42 Cass City, MI 48726  
[chadkreeger@hotmail.com](mailto:chadkreeger@hotmail.com)  
[www.kreegerdairy.com](http://www.kreegerdairy.com)

**Bidding & Sale Process:** The Sale will be conducted in an internet exchange format. You can bid online, attend the sale closing, or any member of the sale team can bid for you or have you on the phone during the sale. The system does have a bid extension and the sale will close when two minutes pass without any increased bids, at that time the high bid will be the buyer of that lot.

### **All Lots sell with 100% Buyer satisfaction**

If the buyer does not like the cattle after viewing them prior to loading at the sellers farm, they do not have to take ownership of them, however once they are loaded and leave the sellers farm they are sold on an "As Is" basis with no warranty, expressed or implied and are the property of the buyer. The Loads will be from the cattle listed, when loading if any animal is not 100% then she will be sorted off and not included in the lot, therefore the final number in each lot may be different.

### Payment Terms:

**All cattle must be paid for in full before they are shipped.**

Payment must be made in good check or wire transfer to Kreeger and Associates, LLC. The buyer will be invoiced for the full amount. Kreeger and Associates will hold the funds until the cattle are loaded. If any difference after loading the balance will be refunded. All bids are in US funds.

Trucking Details: Kreeger and Associates, LLC will assist with load outs and handle arrangements for the trucks.

BIDS: The highest bidder will be the buyer.

HEALTH WARRANTY: Proper health certificates will be provided when required any additional testing cost will be the responsibility of the buyer. The results of any future health test is not guaranteed. No is warranted to be free of Johnes or any other infectious disease. For animals that travel outside of the state of origin the buyer will be responsible for the legal importation of cattle into that state, please check prior to the sale.

Errors: The material printed in this catalog has been carefully edited. If any errors or omissions are discovered, they will be announced. Such announcements take precedence over printed material. This information is provided by the owners and DHIA Records and is believed to be correct, however, it is not guaranteed. This sale will be controlled by an auction program. Kreeger and Associates, LLC is not responsible for malfunction or system errors which cause a bid or bidder to fail to be recognized or registered.

General: It is the intention of the owners and the sale management to represent and present these animals in their present condition, however No adjustments will be made after the animal's leave the sellers farm. Females announced as pregnant were found to be pregnant by a licensed veterinarian. No guarantee is made or implied that the pregnancy will go full term. Cattle that are sold with a natural service date are as accurate as possible, although they are not guaranteed to be exact.

Disclaimer: Any person bidding on items in the auction agrees to these terms and conditions and understands that, by bidding, they are entering into a legal binding contract between themselves and the seller(s) and that they will be held financially responsible for their actions. This includes those people representing parties not present at the sale. Neither the owners, auctioneers, sale manager nor other affiliated personnel may be held responsible for any accidents that may occur. Kreeger and Associates, LLC acts only as an agent between buyer and seller and may not be held responsible for any livestock or merchandise. It is to be clearly understood that Kreeger and Associates, LLC and its representatives act only as a medium between buyer and seller, and may not be held liable, financially or otherwise, for any failure in any obligations set forth in this sale.

# Lot 1

**Pot Load of Fresh Holstein  
Heifers (36-40 Head)**

**Willow Point Dairy  
Belding, Michigan**

**48 Head Average 44 DIM  
Parallel Parlor / Freestall  
Headlocks / Dairycomp  
Complete Herd Health &  
Vaccinations**

**Selected From Willow Point,  
Crossroads, & den Dulk Dairies**

**Delivery by 10-11-19**

**Half Load Option Available**



ID	Fresh	DIM	Lact	Bred	Service Sire
60	8/27/19	29	1		
613	8/19/19	37	1		
623	8/13/19	43	1		
629	7/25/19	62	1		
630	8/31/19	25	1		
935	8/18/19	38	1		
1000	7/23/19	64	1		
1102	8/9/19	47	1		
1237	8/16/19	40	1		
1436	8/16/19	40	1		
1630	8/26/19	30	1		
1819	8/15/19	41	1		
1926	8/21/19	35	1		
1931	7/15/19	72	1		
1996	8/23/19	33	1		
2101	7/14/19	73	1	9/19/19	29AN1891
2170	8/27/19	29	1		
2263	8/21/19	35	1		
2446	9/2/19	23	1		
2447	8/15/19	41	1		
2501	8/1/19	55	1	9/22/19	629J4049
2540	8/25/19	31	1		
2667	8/9/19	47	1		
2894	8/15/19	41	1		

ID	Fresh	DIM	Lact	Bred	Service Sire
3027	8/12/19	44	1		
3314	8/1/19	55	1		
3444	7/23/19	64	1	9/15/19	829AN1891
3455	7/8/19	79	1	9/19/19	29AN1891
3523	9/2/19	23	1		
3619	8/12/19	44	1		
3675	8/5/19	51	1		
3831	7/12/19	75	1	9/19/19	29AN1891
3854	8/18/19	38	1		
3858	7/3/19	84	1	8/25/19	29AN1891
3861	8/21/19	35	1		
3863	8/15/19	41	1		
3881	8/27/19	29	1		
3899	8/13/19	43	1		
3930	8/17/19	39	1		
4167	7/24/19	63	1		
4311	8/17/19	39	1		
4335	7/27/19	60	1		
4345	8/26/19	30	1		
4348	8/26/19	30	1		
4349	9/8/19	17	1		
4361	8/15/19	41	1		
4379	9/6/19	19	1		
4391	8/18/19	38	1		

# Lot 2

**Pot Load of Fresh Holstein  
Heifers (36-40 Head)**

**Willow Point Dairy  
Belding, Michigan**

**49 Head Average 40 DIM  
Parallel Parlor / Freestall  
Headlocks / Dairycomp  
Complete Herd Health &  
Vaccinations**

**Selected From Willow Point,  
Crossroads, & den Dulk Dairies**

**Delivery by 10-11-19**

**Half Load Option Available**



ID	Fresh	DIM	Lact	Bred	Service Sire
4398	8/4/19	52	1		
4403	8/30/19	26	1		
4411	9/1/19	24	1		
4414	8/14/19	42	1		
4424	8/20/19	36	1		
4428	8/30/19	26	1		
4441	8/28/19	28	1		
4454	8/8/19	48	1		
4458	8/14/19	42	1		
4459	9/5/19	20	1		
4470	7/25/19	62	1		
4485	8/15/19	41	1		
4489	8/20/19	36	1		
4493	7/20/19	67	1	9/24/19	629J4049
4494	8/29/19	27	1		
4565	8/28/19	28	1		
4577	8/29/19	27	1		
4578	8/20/19	36	1		
4596	9/1/19	24	1		
4598	8/26/19	30	1		
5316	8/16/19	40	1		
5349	8/5/19	51	1		
5420	7/29/19	58	1	9/22/19	629J4049
5423	8/28/19	28	1		
5428	7/27/19	60	1		

ID	Fresh	DIM	Lact	Bred	Service Sire
5431	8/2/19	54	1	9/23/19	629J4049
5436	8/14/19	42	1		
5448	8/8/19	48	1		
5461	7/29/19	58	1		
5490	8/19/19	37	1		
5495	8/22/19	34	1		
5504	8/20/19	36	1		
5509	8/18/19	38	1		
5552	8/17/19	39	1		
5560	8/3/19	53	1		
5808	8/26/19	30	1		
5848	8/28/19	28	1		
5913	8/27/19	29	1		
25326	8/31/19	25	1		
52775	7/26/19	61	1		
52778	7/27/19	60	1	9/22/19	629J4049
54012	8/30/19	26	1		
54274	8/9/19	47	1		
57753	8/7/19	49	1		
57806	8/7/19	49	1		
57807	8/7/19	49	1	9/15/19	IVFCDJ
57903	8/18/19	38	1		
57908	8/28/19	28	1		
57995	9/5/19	20	1		



# Lot 3

Pot Load of Fresh Holstein  
Heifers (36-40 Head)

Sugar Lane Dairy  
Antwerp, Ohio

46 Head Average 50 DIM  
Herringbone Parlor / Freestall  
Headlocks / Dairycomp  
Complete Herd Health &  
Vaccinations

Delivery by 10-11-19

Half Load Option Available



ID	Fresh	DIM	Lact	Bred	Service Sire
864	7/17/19	76	1	9/15/19	829XB64
884	8/13/19	49	1		
1525	8/28/19	34	1		
1534	7/3/19	90	1	9/12/19	829XB64
1801	9/3/19	28	1		
2047	6/27/19	96	1	9/19/19	511J1179
2282	7/20/19	73	1		
2328	8/28/19	34	1		
2340	7/15/19	78	1		
2354	7/12/19	81	1		
2367	8/13/19	49	1		
2378	8/24/19	38	1		
2380	7/6/19	87	1	9/21/19	829XB56
2413	8/28/19	34	1		
2429	8/28/19	34	1		
2438	8/7/19	55	1		
2456	8/3/19	59	1		
2470	8/23/19	39	1		
2472	8/12/19	50	1		
2476	7/21/19	72	1		
2482	8/13/19	49	1		
2483	8/10/19	52	1		
2498	8/19/19	43	1		

ID	Fresh	DIM	Lact	Bred	Service Sire
2514	8/24/19	38	1		
2550	8/30/19	32	1		
2553	8/4/19	58	1		
2555	8/14/19	48	1		
2556	9/4/19	27	1		
2559	8/27/19	35	1		
2561	8/13/19	49	1		
2562	7/27/19	66	1		
2564	9/2/19	29	1		
2566	7/28/19	65	1		
2571	8/28/19	34	1		
2575	7/22/19	71	1		
2576	8/23/19	39	1		
2577	8/25/19	37	1		
2583	8/13/19	49	1		
2586	9/2/19	29	1		
2590	8/3/19	59	1		
2602	8/12/19	50	1		
2609	8/29/19	33	1		
2613	8/14/19	48	1		
2639	9/3/19	28	1		
2645	8/16/19	46	1		
2647	8/13/19	49	1		

# Lot 4

Pot Load of Fresh Holstein  
Heifers (36-40 Head)

Sugar Lane Dairy  
Antwerp, Ohio

46 Head Average 57 DIM  
Herringbone Parlor / Freestall  
Headlocks / Dairycomp  
Complete Herd Health &  
Vaccinations

Delivery by 10-11-19

Half Load Option Available

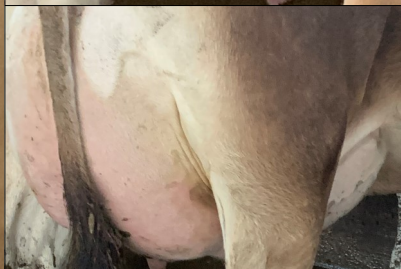
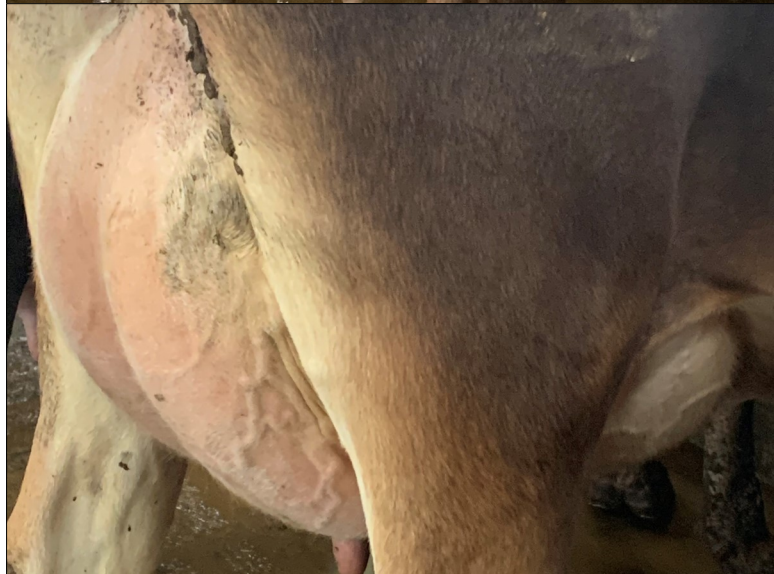


ID	Fresh	DIM	Lact	Bred	Service Sire
2655	8/14/19	48	1		
2660	8/14/19	48	1		
2661	8/27/19	35	1		
2670	8/23/19	39	1		
2677	8/27/19	35	1		
2679	8/27/19	35	1		
2682	8/25/19	37	1		
2686	8/20/19	42	1		
2700	8/12/19	50	1		
2705	7/21/19	72	1	9/28/19	829XB56
2706	9/6/19	25	1		
2707	8/23/19	39	1		
2711	8/24/19	38	1		
2713	8/17/19	45	1		
2714	8/13/19	49	1		
2720	8/25/19	37	1		
2721	8/24/19	38	1		
2722	9/2/19	29	1		
2723	8/25/19	37	1		
2728	7/5/19	88	1		
2729	7/19/19	74	1		
2787	7/9/19	84	1		
2788	7/22/19	71	1	9/28/19	829XB56

ID	Fresh	DIM	Lact	Bred	Service Sire
2789	7/29/19	64	1		
2793	7/14/19	79	1		
2797	7/16/19	77	1	9/23/19	511J1179
2800	7/12/19	81	1	9/23/19	511H11629
2802	7/10/19	83	1	9/6/19	829XB56
2805	7/23/19	70	1	9/21/19	829XB56
2809	7/24/19	69	1		
2829	7/22/19	71	1		
2830	7/1/19	92	1	8/30/19	829XB56
2832	7/21/19	72	1	9/13/19	829XB64
2833	7/21/19	72	1	9/26/19	829XB56
2836	7/22/19	71	1		
3218	8/20/19	42	1		
3222	8/12/19	50	1		
3226	8/1/19	61	1	9/30/19	829XB64
3233	8/14/19	48	1		
3316	7/22/19	71	1	9/28/19	829XB56
3319	7/21/19	72	1	9/21/19	829XB56
4201	7/21/19	72	1		
52764	7/15/19	78	1	9/21/19	829XB56
52770	7/23/19	70	1		
52773	7/29/19	64	1		



**Lot 5**





# Lot 5

Pot Load of Fresh Jersey Heifers (45-50 Head)

Willow Point Dairy Belding, MI

65 Head Average 48 DIM

Herringbone Parlor / Freestall Headlocks / Dairycomp

Complete Herd Health & Vaccinations

Serviced Heifers are bred Sexed

Selected From Willow Point & Crossroads Dairies

Delivery by 10-11-19

Half Load Option Available



ID	Fresh	DIM	Lact	Bred	Service Sire
68	8/19/19	43	1	9/19/19	629H18708
225	8/14/19	48	1		
245	9/5/19	26	1		
247	8/24/19	38	1		
252	7/29/19	64	1		
298	8/9/19	53	1		
343	8/8/19	54	1	9/15/19	629H18634
374	8/21/19	41	1		
563	8/18/19	44	1		
675	8/28/19	34	1		
688	8/8/19	54	1	9/29/19	629H18634
814	8/4/19	58	1	9/24/19	629J4049
850	8/15/19	47	1		
980	8/20/19	42	1		
1919	7/20/19	73	1	9/9/19	629H18690
1954	7/23/19	70	1		
2087	7/16/19	77	1	9/27/19	629H18836
2119	7/16/19	77	1	9/8/19	629H18634
3585	7/22/19	71	1		
3589	8/4/19	58	1		
3629	7/23/19	70	1		
3682	8/19/19	43	1		
3730	8/3/19	59	1		
3960	8/21/19	41	1		
3983	7/24/19	69	1	9/16/19	629H18690
4000	8/1/19	61	1	9/18/19	629H18708
4191	8/1/19	61	1	9/23/19	629H18836
4308	7/16/19	77	1	9/26/19	629J4049
4634	8/4/19	58	1		
4650	8/1/19	61	1	9/22/19	629J4049
4665	8/9/19	53	1		
4812	8/8/19	54	1		
4813	9/3/19	28	1		

ID	Fresh	DIM	Lact	Bred	Service Sire
5021	8/26/19	36	1		
5594	7/17/19	76	1	9/26/19	629J4049
5595	7/16/19	77	1	9/22/19	629J4049
5610	7/10/19	83	1	9/22/19	629J4049
5619	7/17/19	76	1	9/8/19	629H18634
5639	8/19/19	43	1		
5659	8/30/19	32	1		
5668	9/6/19	25	1		
20877	8/11/19	51	1		
21379	8/21/19	41	1		
21412	9/3/19	28	1		
21678	9/12/19	19	1		
25600	9/10/19	21	1		
26816	9/7/19	24	1		
26884	9/10/19	21	1		
27038	9/2/19	29	1		
27045	9/12/19	19	1		
27312	9/13/19	18	1		
50513	8/3/19	59	1		
50627	9/10/19	21	1		
50814	9/11/19	20	1		
53744	9/9/19	22	1		
57754	9/8/19	23	1		
57769	8/27/19	35	1		
57777	8/15/19	47	1		
57788	7/15/19	78	1	9/8/19	629H18634
57802	9/5/19	26	1		
57803	8/8/19	54	1		
57822	8/12/19	50	1		
57861	7/30/19	63	1	9/23/19	629H18690
57871	8/19/19	43	1		
84904	7/18/19	75	1	9/6/19	629H18708