

Midwest

Fresh Heifer Selection Sale

Black Soil Dairy Granville, Iowa

Sugar Lane Dairy Antwerp, Ohio

Willow Point Dairy Belding, Michigan

Bid Online, In Person, Or On The Phone

Thursday September 12, 2019 11AM-1PM EST Fabiano's Westphalia, MI



Midwest

Fresh Heifer Selection Sale

Thursday September 12, 2019

11:00AM to 1:00PM EST

Fabiano's Westphalia, MI

Bid Online, In Person, Or By Phone

The Sale will be online at www.kreegerdairy.com

There will be a spot to click the auction page to enter the sale site to bid and watch.

The Heifers have been sorted in to Semi Load Lots of 36-40 Head. The buyer may determine how many they want on the load. Each Lot has extras in it to ensure the load is as perfect as possible.

Half Load Option: If the buyer would prefer 18-20 in a lot then they can chose the half load, The heifers in a half load lot will be determined by a gate cut.

Videos are online at www.kreegerdairy.com

Sale Staff

Chad Kreeger	517-294-3484
Paul Warner	517-231-8427
Shaun Hyde	989-287-2660
Gabe Papoi	989-444-8275
Clay Papoi	517-526-1917
Dave Bennett	989-286-7244
Dave Whelen	517-403-7219
Brian Landis	574-536-5026
Kent Inniger	989-289-6594
Steve Vander Hoff	517-206-4822

Please contact any member of the sale team to place bids or with questions on the cattle or the sale process.

Dairies Contact

Karl den Dulk	231-578-9579
---------------	--------------

Pre Sale Viewing

Please Contact Us To Arrange A Visit Prior To The Sale

Sale Managed By

Kreeger
and Associates, LLC

Chad Kreeger 517-294-3484
Box 42 Cass City, MI 48726
chadkreeger@hotmail.com
www.kreegerdairy.com

Bidding & Sale Process: The Sale will be conducted in an internet exchange format. You can bid online, attend the sale closing, or any member of the sale team can bid for you or have you on the phone during the sale. The system does have a bid extension and the sale will close when two minutes pass without any increased bids, at that time the high bid will be the buyer of that lot.

All Lots sell with 100% Buyer satisfaction

If the buyer does not like the cattle after viewing them prior to loading at the sellers farm, they do not have to take ownership of them, however once they are loaded and leave the sellers farm they are sold on an "As Is" basis with no warranty, expressed or implied and are the property of the buyer. The Loads will be from the cattle listed, when loading if any animal is not 100% then she will be sorted off and not included in the lot, therefore the final number in each lot may be different.

Payment Terms:

All cattle must be paid for in full before they are shipped.

Payment must be made in good check or wire transfer to Kreeger and Associates, LLC. The buyer will be invoiced for the full amount. Kreeger and Associates will hold the funds until the cattle are loaded. If any difference after loading the balance will be refunded. All bids are in US funds.

Trucking Details: Kreeger and Associates, LLC will assist with load outs and handle arrangements for the trucks.

BIDS: The highest bidder will be the buyer.

HEALTH WARRANTY: Proper health certificates will be provided when required any additional testing cost will be the responsibility of the buyer. The results of any future health test is not guaranteed. No is warranted to be free of Johnes or any other infectious disease. For animals that travel outside of the state of origin the buyer will be responsible for the legal importation of cattle into that state, please check prior to the sale.

Errors: The material printed in this catalog has been carefully edited. If any errors or omissions are discovered, they will be announced. Such announcements take precedence over printed material. This information is provided by the owners and DHIA Records and is believed to be correct, however, it is not guaranteed. This sale will be controlled by an auction program. Kreeger and Associates, LLC is not responsible for malfunction or system errors which cause a bid or bidder to fail to be recognized or registered.

General: It is the intention of the owners and the sale management to represent and present these animals in their present condition, however No adjustments will be made after the animal's leave the sellers farm. Females announced as pregnant were found to be pregnant by a licensed veterinarian. No guarantee is made or implied that the pregnancy will go full term. Cattle that are sold with a natural service date are as accurate as possible, although they are not guaranteed to be exact.

Disclaimer: Any person bidding on items in the auction agrees to these terms and conditions and understands that, by bidding, they are entering into a legal binding contract between themselves and the seller(s) and that they will be held financially responsible for their actions. This includes those people representing parties not present at the sale. Neither the owners, auctioneers, sale manager nor other affiliated personnel may be held responsible for any accidents that may occur. Kreeger and Associates, LLC acts only as an agent between buyer and seller and may not be held responsible for any livestock or merchandise. It is to be clearly understood that Kreeger and Associates, LLC and its representatives act only as a medium between buyer and seller, and may not be held liable, financially or otherwise, for any failure in any obligations set forth in this sale.



Lot 1

Willow Point Dairy Belding, Michigan

Fresh Holstein Heifers (36-40 Head) Avg 46 DIM

Parallel Parlor / Freestall / Headlocks / Dairycomp

Complete Herd Health & Vaccinations

Delivery by 9-17-19, Half Load Option Available



ID	DIM	Fresh	Lact	Bred	Serv Sire
19	80	6/19/19	1	8/29/19	29AN1891
768	84	6/15/19	1	8/22/19	29AN1993
902	81	6/18/19	1	8/29/19	29AN1891
905	74	6/25/19	1	9/5/19	29SM461
979	76	6/23/19	1	8/11/19	29AN1891
1006	41	7/28/19	1		
1027	68	7/1/19	1		
1072	36	8/2/19	1		
1556	39	7/30/19	1		
1653	51	7/18/19	1		
1697	53	7/16/19	1		
1750	31	8/7/19	1		
1831	40	7/29/19	1		
2056	70	6/29/19	1	9/5/19	29SM461
2103	66	7/3/19	1		
2135	29	8/9/19	1		
2188	39	7/30/19	1		
2258	59	7/10/19	1		
2266	29	8/9/19	1		
2345	32	9/6/19	1		
2361	39	7/30/19	1		
2420	54	7/15/19	1		
2425	24	8/14/19	1		
2466	54	7/15/19	1		
2491	46	7/23/19	1		

ID	DIM	Fresh	Lact	Bred	Serv Sire
2543	43	7/26/19	1		
2547	47	7/22/19	1		
2574	58	7/11/19	1		
2582	53	7/16/19	1		
2604	26	8/12/19	1		
2605	32	8/6/19	1		
2621	59	7/10/19	1		
2672	39	7/30/19	1		
2942	39	7/30/19	1		
3219	27	8/11/19	1		
3242	48	7/21/19	1		
3265	37	8/1/19	1		
3283	47	7/22/19	1		
3303	39	7/30/19	1		
3342	35	8/3/19	1		
3354	37	8/1/19	1		
3358	57	7/12/19	1	9/1/19	829AN1891
3359	35	8/3/19	1		
3381	43	7/26/19	1		
3382	37	8/1/19	1		
3415	42	7/27/19	1		
3437	29	8/9/19	1		
3463	36	8/2/19	1		
3473	36	8/2/19	1		
3480	56	7/13/19	1		



Lot 2

Willow Point Dairy Belding, Michigan

Fresh Holstein Heifers (36-40 Head) Avg 37 DIM

Parallel Parlor / Freestall / Headlocks / Dairycomp

Complete Herd Health & Vaccinations

Delivery by 9-17-19, Half Load Option Available



ID	DIM	Fresh	Lact	Bred	Serv Sire
3502	42	7/27/19	1		
3539	41	7/28/19	1		
3578	35	8/3/19	1		
3602	35	8/3/19	1		
3627	33	8/5/19	1		
3667	42	7/27/19	1		
3675	33	8/5/19	1		
3734	31	8/7/19	1		
3740	49	7/20/19	1		
3748	24	8/14/19	1		
3768	51	7/18/19	1		
3776	75	6/24/19	1	9/5/19	29SM461
3793	27	8/11/19	1		
3841	28	8/10/19	1		
3902	38	7/31/19	1		
3946	33	8/5/19	1		
4080	90	6/9/19	1	8/29/19	29AN1891
4313	32	8/6/19	1	9/6/19	29AN1993
4398	34	8/4/19	1		
4409	41	7/28/19	1		
4421	24	8/14/19	1		
4469	32	8/6/19	1		
4470	44	7/25/19	1		
4490	28	8/10/19	1		
4492	38	7/31/19	1		

ID	DIM	Fresh	Lact	Bred	Serv Sire
4493	49	7/20/19	1		
4521	54	7/15/19	1		
4540	31	8/7/19	1		
4560	35	8/3/19	1		
5412	32	8/6/19	1		
5413	32	8/6/19	1		
5414	40	7/29/19	1		
5418	31	8/7/19	1		
5420	40	7/29/19	1		
5429	42	7/27/19	1		
5431	36	8/2/19	1		
5435	33	8/5/19	1		
5437	39	7/30/19	1		
5442	38	7/31/19	1		
5445	25	8/13/19	1		
5464	38	7/31/19	1		
5465	25	8/13/19	1		
5478	37	8/1/19	1		
5482	30	8/8/19	1		
5485	32	8/6/19	1		
5532	29	8/9/19	1		
5545	31	8/7/19	1		
5557	28	8/10/19	1	9/6/19	29AN1993
5559	27	8/11/19	1		



Lot 3

Sugar Lane Dairy Antwerp, Ohio

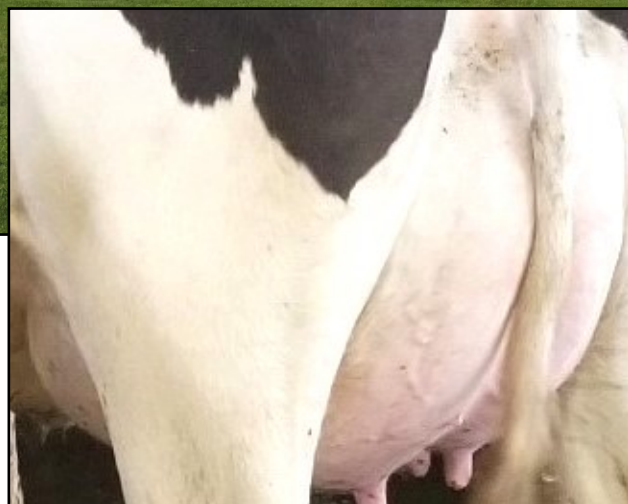
Fresh Holstein Heifers (36-40 Head) Avg 61 DIM

Herringbone Parlor / Freestall / Headlocks / Dairycomp

Complete Herd Health & Vaccinations

Herd SCC Avg 126K, Herd Staph & Myco Free

Delivery by 9-17-19, Half Load Option Available



ID	DIM	Fresh	Lact	Bred	Serv Sire
964	52	7/17/19	1		
965	59	7/10/19	1		
874	44	7/25/19	1		
924	35	8/3/19	1		
1222	71	6/24/19	1		
1497	85	6/14/19	1	9/2/19	511H11629
1502	86	6/13/19	1	9/2/19	511H11629
1546	86	6/13/19	1	9/6/19	511H12148
1546	86	6/11/19	1	8/10/19	511H11317
1604	76	6/23/19	1		
1741	67	7/2/19	1		
1808	59	7/10/19	1		
2022	59	7/10/19	1		
2034	57	7/12/19	1		
2039	73	6/26/19	1		
2041	77	6/22/19	1		
2049	81	6/18/19	1		
2056	60	7/9/19	1		
2059	78	6/21/19	1		
2063	83	6/16/19	1		
2067	97	6/2/19	1	8/23/19	511H12148
2068	40	7/29/19	1		
2074	75	6/24/19	1		
2114	64	7/5/19	1		
2134	83	6/16/19	1		

ID	DIM	Fresh	Lact	Bred	Serv Sire
2137	89	6/10/19	1	9/2/19	511H11629
2282	49	7/20/19	1		
2307	69	6/30/19	1		
2313	79	6/20/19	1		
2330	34	8/4/19	1		
2339	51	7/18/19	1		
2341	52	7/17/19	1		
2344	51	7/18/19	1		
2346	39	7/30/19	1		
2348	54	7/15/19	1		
2349	56	7/13/19	1		
2354	57	7/12/19	1		
2357	65	7/4/19	1		
2359	37	8/1/19	1		
2361	31	8/7/19	1		
2364	54	7/15/19	1		
2368	59	7/10/19	1		
2371	68	7/1/19	1		
2372	50	7/19/19	1		
2377	45	7/24/19	1		
2379	71	6/28/19	1		
2405	29	8/9/19	1		
2439	35	8/3/19	1		
2443	47	7/22/19	1		
2444	62	7/7/19	1		



Lot 4

Sugar Lane Dairy Antwerp, Ohio

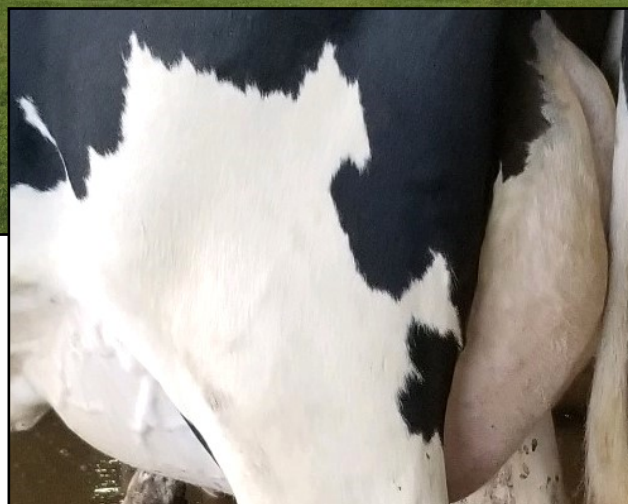
Fresh Holstein Heifers (36-40 Head) Avg 43 DIM

Herringbone Parlor / Freestall / Headlocks / Dairycomp

Complete Herd Health & Vaccinations

Herd SCC Avg 126K, Herd Staph & Myco Free

Delivery by 9-17-19, Half Load Option Available



ID	DIM	Fresh	Lact	Bred	Serv Sire
2445	74	6/25/19	1	9/6/19	511H12148
2448	48	7/21/19	1		
2468	56	7/13/19	1		
2471	68	7/1/19	1		
2475	63	7/6/19	1		
2476	48	7/21/19	1		
2481	61	7/8/19	1		
2483	28	8/10/19	1		
2488	37	8/1/19	1		
2489	52	7/17/19	1		
2492	50	7/19/19	1		
2501	58	7/11/19	1		
2526	33	8/5/19	1		
2542	28	8/10/19	1		
2544	37	8/1/19	1		
2549	34	8/4/19	1		
2553	34	8/4/19	1		
2558	39	7/30/19	1		
2562	42	7/27/19	1		
2565	45	7/24/19	1		
2566	41	7/28/19	1		
2569	35	8/3/19	1		
2570	43	7/26/19	1		
2575	47	7/22/19	1		
2585	37	8/1/19	1		

ID	DIM	Fresh	Lact	Bred	Serv Sire
2590	35	8/3/19	1		
2602	26	8/12/19	1		
2637	33	8/5/19	1		
2666	38	7/31/19	1		
2672	48	7/21/19	1		
2680	29	8/9/19	1		
2705	48	7/21/19	1		
2708	40	7/29/19	1		
2717	30	8/8/19	1		
2719	28	8/10/19	1		
2785	48	7/21/19	1		
2788	47	7/22/19	1		
2790	45	7/24/19	1		
2793	55	7/14/19	1		
2810	36	8/2/19	1		
2824	36	8/2/19	1		
2826	43	7/26/19	1		
2828	48	7/21/19	1		
3220	33	8/5/19	1		
3222	26	8/12/19	1		
3226	37	8/1/19	1		
3316	47	7/22/19	1		
3318	48	7/21/19	1		
3611	42	7/27/19	1		
52770	46	7/23/19	1		



Lot 5

Black Soil Dairy Granville, Iowa

Fresh Holstein Heifers (36-40 Head) Avg 34 DIM

Rotary Parlor / Freestall / Headlocks / Dairycomp

Complete Herd Health & Vaccinations

Herd SCC Avg 155K, All Tested Staph & Myco Free

Delivery by 9-17-19, Half Load Option Available



ID	DIM	Fresh	Lact	Bred	Serv Sire
1246	36	8/2/19	1		
1295	37	8/1/19	1		
2731	37	8/1/19	1		
2883	35	8/3/19	1		
3078	39	7/30/19	1		
3128	38	7/31/19	1		
3670	26	8/12/19	1		
4686	38	7/31/19	1		
8402	28	8/10/19	1		
27862	31	8/7/19	1		
28191	18	8/20/19	1		
28209	30	8/8/19	1		
60353	28	8/10/19	1		
60731	29	8/9/19	1		
60732	32	8/6/19	1		
60733	37	8/1/19	1		
60735	58	7/11/19	1		
60753	42	7/27/19	1		
60825	29	8/9/19	1		
60826	37	8/1/19	1		
60837	59	7/10/19	1		

ID	DIM	Fresh	Lact	Bred	Serv Sire
60838	56	7/13/19	1		
60841	36	8/2/19	1		
60846	36	8/2/19	1		
60853	37	8/1/19	1		
60854	35	8/3/19	1		
60859	36	8/2/19	1		
60863	36	8/2/19	1		
60865	56	7/13/19	1		
60894	37	8/1/19	1		
61018	53	7/16/19	1		
61037	43	7/26/19	1		
61041	38	7/31/19	1		
61136	35	8/3/19	1		
61409	28	8/10/19	1		
61410	42	7/27/19	1		
61411	37	8/1/19	1		
61413	28	8/10/19	1		
61416	29	8/9/19	1		
61425	27	8/11/19	1		
61441	33	8/5/19	1		



Lot 6

Black Soil Dairy Granville, Iowa

Fresh Holstein Heifers (36-40 Head) Avg 32 DIM

Rotary Parlor / Freestall / Headlocks / Dairycomp

Complete Herd Health & Vaccinations

Herd SCC Avg 155K, All Tested Staph & Myco Free

Delivery by 9-17-19, Half Load Option Available

ID	DIM	Fresh	Lact	Bred	Serv Sire
61445	30	8/8/19	1		
61456	32	8/6/19	1		
61457	36	8/2/19	1		
61461	22	8/16/19	1		
61463	29	8/9/19	1		
61465	28	8/10/19	1		
61467	32	8/6/19	1		
61470	18	8/20/19	1		
61471	28	8/10/19	1		
61474	18	8/20/19	1		
61476	28	8/10/19	1		
61479	29	8/9/19	1		
61480	37	8/1/19	1		
61483	28	8/10/19	1		
74709	63	7/6/19	1		
76011	34	8/4/19	1		
94913	31	8/7/19	1		
94945	29	8/9/19	1		
94986	36	8/2/19	1		
94999	36	8/2/19	1		
95026	36	8/2/19	1		

ID	DIM	Fresh	Lact	Bred	Serv Sire
95108	27	8/11/19	1		
95120	37	8/1/19	1		
95176	36	8/2/19	1		
95211	60	7/9/19	1		
95330	34	8/4/19	1		
95334	34	8/4/19	1		
95559	32	8/6/19	1		
95584	42	7/27/19	1		
95592	26	8/12/19	1		
95595	31	8/7/19	1		
95629	25	8/13/19	1		
95631	59	7/10/19	1		
95633	34	8/4/19	1		
95637	33	8/5/19	1		
95640	29	8/9/19	1		
95642	27	8/11/19	1		
95650	23	8/15/19	1		
95762	18	8/20/19	1		
97533	32	8/6/19	1		
97588	46	7/23/19	1		