

8-25-21 | ONLINE | [www.kreegerdairy.com](http://www.kreegerdairy.com)

# Fall Preview

ONLINE Holstein Exchange

# Fall Preview

## ONLINE Holstein Exchange

**Wednesday 8-25-2021**

**12-1 PM ET**

**Bid Online or On The Phone**

**[www.kreegerdairy.com](http://www.kreegerdairy.com)**

**Load Out 8-26-21, Unless other arrangements  
are made prior to the sale**

*There will be a link to click on the auction page to enter the  
sale site to View The Videos and Information for Each Lot,  
Register for The Sale, Bid, & or Watch. The Sale opens for  
bidding at 12PM and begins closing at 1PM, but the site is  
available to view the videos and information ahead of the sale.*

### Sale Coordinators

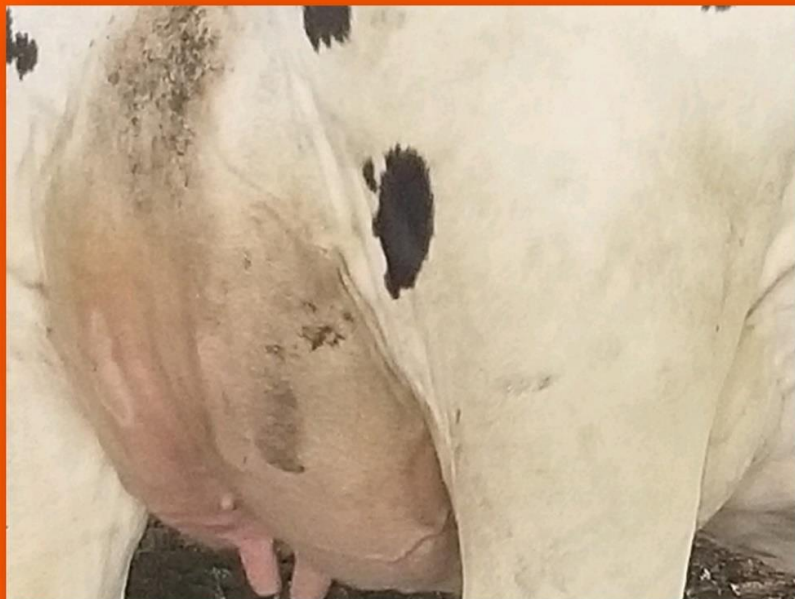
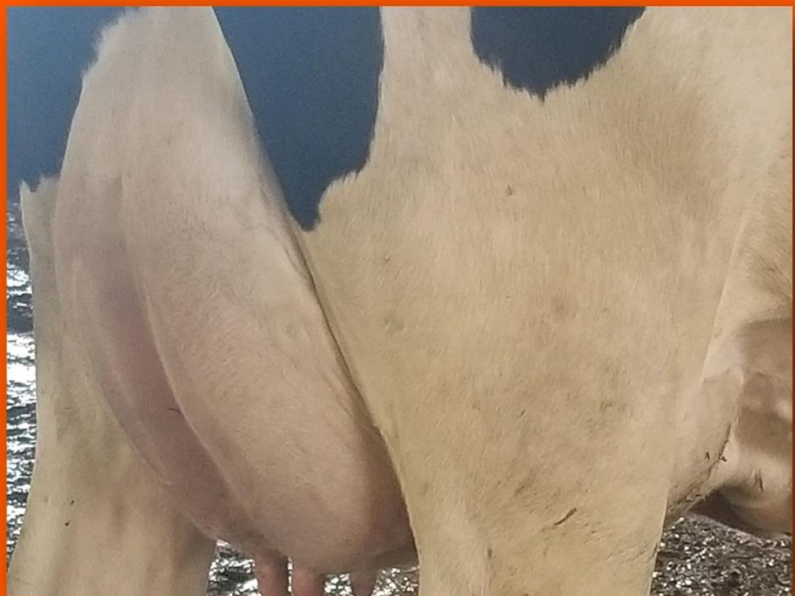
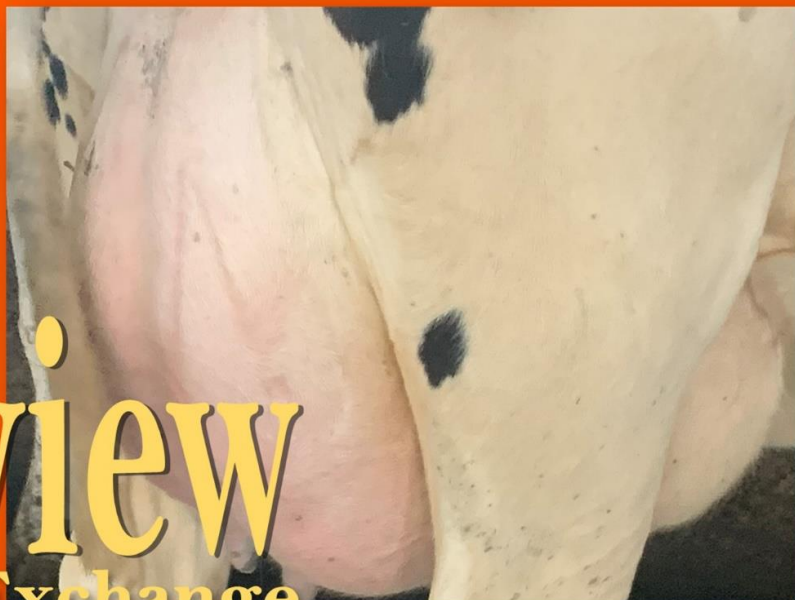
Chad Kreeger	517-294-3484
Clay Papoi	517-526-1917
Paul Warner	517-231-8427
Dave Whelen	517-403-7219
Brian Landis	574-536-5026
Shaun Hyde	989-287-2660
Gabe Papoi	989-444-8275
Dave Bennett	989-286-7244

*Please contact any member of the sale team to place bids on  
the phone or with questions on the cattle or the sale process.*

Sale Managed By

**Kreeger**  
and Associates, LLC  
Box 42 Cass City, MI 48726  
Chad Kreeger 517-294-3484

Terms: Full Payment before or at  
loading  
No Buyers Premium | Trucking  
Available



## Internet Description Score (IDS)

This is just one persons opinion to help describe each cow. The higher the number the better she is, with 3 being an average good looking & working functional cow.

### (A) Appearance

Range 1-5 with 3 as an Average Good Cow

### (U) Udder

Range 1-5 with 3 as an Average Good Udder

### (F) Feet

Range 1-5 with 3 as an Average Good Feet

### (L) Legs

Range 1-5 with 3 as an Average Good Legs

### (S) Stature

Range 1-5 with 3 as an Average Size Cow

### (B) Body Condition

Range: 1 (Thin)-5 (Fat)

## Other Codes

(LF)	Left Front
(RF)	Right Front
(LR)	Left Rear
(RR)	Right Rear
(LLR)	Light Left Rear Quarter
(LRR)	Light Right Rear Quarter
(LLF)	Light Left Front Quarter
(LRF)	Light Right Front Quarter
(3 QU)	3 Quarter Cow
(WFT)	Wide Front Teats
(WRT)	Wide Rear Teats
(IMB)	Imbalanced Udder
(HPN)	High Pins
(LPN)	Low Pins
(NFT)	Needs Foot Trimming
(SL)	Slight
(LAM)	Lame
(LMP)	Limp

## Star System

**5 STAR** This is based on there (IDS) and there production and reproduction information. A Five Star best combines it all LOOKS and INFORMATION!

**4 STAR**— Almost a 5, but not quite!



Cattle in this lot are genomic tested , The NM\$ is genomic



Protocol used that was designed by the herd veterinarian



Cattle in this lot are NOT genomic tested , The NM\$ is Parent Average



Heifers off the dairy of there birth.



Cattle Selling in this lot are AI Bred



Grower heifers that have been raised from baby calves



Cattle Selling in this lot are AI Sired



Grower heifers that have a history of buyer success

## Terms & Conditions

**Bidding & Sale Process:** The Sale will be conducted in an internet auction format. You can bid online or any member of the sale team can bid for you or have you on the phone the phone during the sale. The Sale begins closing at 12:00 PM, Each Minute one lot closes in lot order. The system does have a bid extension and the lot will close when one minute passes without any increased bids on that lot. The sale will continue to close in order, even if there is overtime bidding on one or multiple lots . When the lot closes the high bid will be the buyer

## All Lots sell with 100% Buyer satisfaction

If the buyer does not like the cattle after viewing them prior to loading at the sellers farm, they do not have to take ownership of them, however once they are loaded and leave the sellers farm they are sold on an "As Is" basis with no warranty, expressed or implied and are the property of the buyer. For lots listed as "Sort At Loading"— we will sort any off that need to be, therefore the head count may very. Lots will sell by the head multiplied by the number of head in each specific lot for the total lot price. If other selling terms are used on a lot it will be listed on that lot description, Example: Selling by the pound multiplied by the total weight of the lot weighed on the truck.

## Payment Terms

**All cattle must be paid for in full before they are loaded.**

Payment must be made in good check or wire transfer to Kreeger and Associates, LLC. The buyer will be invoiced for the full amount. Kreeger and Associates will hold the funds until the cattle are loaded. If any difference after loading the balance will be refunded. All bids are in US funds.

**Trucking Details:** Kreeger and Associates, LLC will assist with load outs and handle arrangements for the trucks.

**Health Warranty:** Proper health certificates will be provided when required any additional testing cost will be the responsibility of the buyer. The results of any future health test is not guaranteed. No iswarranted to be free of Johnes or any other infectious disease. For animals that travel outside of the state of origin the buyer will be responsible for the legal importation of cattle into that state, please check prior to the sale.

**Errors:** The material printed in this catalog has been carefully edited. If any errors or omissions are discovered, they will be posted a [www.kreegerdairy.com](http://www.kreegerdairy.com) and changed in the auction system. Such announcements take precedence over printed material. This information is provided by the owners and DHIA Records and is believed to be correct, however, it is not guaranteed. This sale will be controlled by an auction program. Kreeger and Associates, LLC is not responsible for malfunction or system errors which cause a bid or bidder to fail to be recognized or registered. Some of the animals shown in a lot video may have been moved to a different lot allowing for truck load capacity and reproductive status.

**General:** It is the intention of the owners and the sale management to represent and present these animals in their present condition, however No adjustments will be made after the animal's) leave the sellers farm. Females announced as pregnant were found to be pregnant by a licensed veterinarian. No guarantee is made or implied that the pregnancy will go full term. Cattle that are sold with a natural service date are asaccurate as possible, although they are not guaranteed to be exact.

**Disclaimer:** Any person bidding on items in the auction agrees to these terms and conditions and understands that, by bidding, they are entering into a legal binding contract between themselves and the seller(s) and that they will be held financially responsible for their actions. This includes those people representing parties not present at the sale. Neither the owners, auctioneers, sale manager nor other affiliated personnel may be held responsible for any accidents that may occur. Kreeger and Associates, LLC acts only as an agent between buyer and seller and may not be held responsible for any livestock or merchandise. It is to be clearly understood that Kreeger and Associates, LLC and its representatives act only as a medium between buyer and seller, and may not be held liable, financially or otherwise, for any failure in any obligations set forth in this sale.

# Rottier Farms

**1** 8 Fresh Holstein Heifers  
All Fresh In July | Avg 72#

Milking Herd & Bred Heifer Dispersal | Freemont, MI  
Tank Avg 75# 4.05F 3.1%P SCC-110K | Flat Barn | Freestall  
Vaccinated Annually w/ Bovishield Gold Or Cattlemaster , Cydectin ,  
Dry Treated w/ US Vet Go Dry  
Bulls From Sand Creek, Gasper, & Green Meadows

ID	Fresh	Milk	Fat%	Pro%	SCC	Lact		Bred	R	Due	ServSire	SireCode		U	F	L	F	B	Comment
702	7/29	72	2.4	3.4	40	1		Exposed			HB-SC	HB-SC		5	4	4	2	2	4 STAR
703	7/16	72	3.5	3.1	20	1		Exposed			HB-SC	HB-SC		4	3	3	2	2	4 STAR
706	7/26	72	3.1	2.9	11	1		Exposed			HB-SC	HB-SC		5	4	4	3	2	4 STAR
711	7/29	72	2.9	3.3	93	1		Exposed			HB-SC	HB-SC		4	3	3	3	2	4 STAR
720	7/12	70	2.6	2.7	45	1		Exposed			HB-SC	HB-SC		4	3	3	2	2	4 STAR
734	7/15	72	3.6	2.7	17	1		Exposed			HB-SC	HB-SC		5	4	4	2	2	4 STAR

## Individual Lots (1 or 2 + ID Number)

ID	Fresh	Milk	Fat%	Pro%	SCC	Lact		Bred	R	Due	ServSire	SireCode		U	F	L	F	B	Comment
347	11/18	68	2.4	3.3	51	3			P	12/26	HB-SC	AI Sired		4	3	3	3	2	
367	7/17	118	5.3	2.7	10	3		Exposed			HB-SC	AI Sired		3	3	3	2	2	DA Surgery 7-27
553	Dry					4			P	11/1	HB-SC	BANKROL		4	3	5	4	3	
564	12/30	70	4.2	3.2	188	3			P	11/12	HB-SC	BigStar		2	2	3	4	2	
616	7/5	84	3.0	2.8	6	2		Exposed			HB-SC	HB-GMF		2	3	3	3	2	3 QU - LF
646	7/18	60	2.7	3.0	12	2		Exposed			HB-SC	HB-SC		3	3	2	4	3	
650	10/30	48	4.4	3.9	28	1			P	12/2	HB-SC	HB-GMF		4	3	3	3	2	
664	12/18	64	4.0	3.0	86	1			P	11/12	HB-SC	HB-GMF		4	4	4	3	2	
684	Dry					1			P	9/21	HB-SC	AI Sired		4	3	3	3	2	
685	1/3	104	2.9	2.6	5	3			P	12/19	HB-SC	HB-SC		3	3	3	3	1	
686	3/29	74	4.0	3.3	12	2		Exposed			HB-SC	HB-SC		4	3	4	3	1	
687	6/29	84	3.9	3.1	23	1		Exposed			HB-SC	29H16315		3	3	3	2	2	
688	3/19	98	3.6	3.3	13	3		Exposed			HB-SC	HB-SC		3	3	3	3	2	
689	12/11	76	3.0	3.2	516	3			P	1/11	HB-SC	HB-SC		3	3	3	3	2	
690	Dry					1			P	10/22	HB-SC	AI Sired		4	3	3	3	3	
691	3/13	84	3.1	3.1	13	3		Exposed			HB-SC	HB-SC		4	3	3	3	2	
692	Dry					4			P	10/27	HB-SC	AI Sired		3	3	2	3	2	
693	11/14	50	3.2	3.3	91	4			P	1/6	HB-SC	HB-SC		4	3	3	4	4	
694	1/9	82	3.1	2.9	21	2			P	12/2	HB-SC	HB-SC		4	3	2	4	2	
695	7/21	112	4.3	2.8	18	4		Exposed			HB-SC	AI Sired		4	3	3	4	3	
696	4/20	88	3.3	3.2	3	2		Exposed			HB-SC	HB-SC		4	3	3	4	2	
697	5/26	76	3.1	3.1	203	1		Exposed			HB-SC	AI Sired		3	3	3	2	2	
698	Dry					2			P	10/12	HB-SC	HB-SC		4	3	3	5	3	
699	6/20	67	3.9	2.9	40	1		Exposed			HB-SC	7H11839		3	3	3	2	2	Slight Light Right Rear
700	7/30				18	1		Exposed			HB-SC	HB-SC		4	4	4	2	2	
701	8/4	66	3.2	3.8	149			Exposed			HB-SC			4	3	4	3	2	
704	7/20	60	3.4	3.2	70	1		Exposed			HB-SC	HB-SC		4	4	4	2	2	
705	7/20	78	3.7	3.0	255	1		Exposed			HB-SC	HB-SC		4	3	4	2	2	
707	7/27	78	2.7	2.9	25	1		Exposed			HB-SC	HB-SC		3	3	4	2	2	
708	7/14	70	3.3	2.7	14	1		Exposed			HB-SC	HB-SC		3	3	3	3	2	
710	7/27	64	3.3	3.1	9	1		Exposed			HB-SC	HB-SC		3	3	4	3	2	
714	7/20	72	3.5	3.3	23	1		Exposed			HB-SC	HB-SC		3	3	2	2	3	Light Left Rear
717	7/19	58	3.2	2.5	34	1		Exposed			HB-SC	HB-SC		3	4	3	2	2	
718	8/7				38	1		Exposed			HB-SC	HB-SC		3	3	3	3	2	
719	7/22	64	3.4	3.0	109	1		Exposed			HB-SC	HB-SC		4	3	3	2	2	
721	Dry					1		Exposed			HB-SC	HB-SC		5	4	3	2	2	Sells Fresh
723	7/24	70	2.6	3.0	206	1		Exposed			HB-SC	HB-SC		4	3	4	2	2	
725	7/22	52	3.5	2.9	54	1		Exposed			HB-SC	HB-SC		4	3	5	2	2	
770	Dry							Due Soon			HB-SC			2	3	3	2	3	Jersey X
771	8/15					4					HB-SC	AI Sired		4	3	3	4	3	Swiss Cross
773	9/28	70	4.8	3.5	59	4			P	1/3	HB-SC	AI Sired		3	3	3	3	3	Light Left Rear

ID	Fresh	Milk	Fat%	Pro%	SCC	Lact		Bred	R	Due	ServSire	SireCode		U	F	L	F	B	Comment
778	Dry					4			P	10/12	HB-SC	AI Sired		3	3	3	4	3	
1462	BULL										HB-SC							4	
4765	2/20	82	2.9	3.2	13	3		Exposed			HB-SC	AI Sired		3	4	4	3	2	
6970	Dry					2			P	10/22	HB-SC	29H18036		2	3	3	3	3	3 QU - LF

## 2-7000

2 Holstein Dry Cows (Front Feet)

Due in Octobr w/ 2nd Calf

ID	Fresh	Milk	Fat%	Pro%	SCC	Lact		Bred	R	Due	ServSire	SireCode		U	F	L	F	B	Comment
620	Dry					1			P	10/27	HB-SC			3	2	3	3	3	Frt Feet
638	Dry					1			P	10/12	HB-SC			3	2	3	3	3	Frt Feet

## 3

2 Holstein Bred Heifers

Due in August

ID	Due
709	8/25
732	8/22

## 4

7 Holstein Bred Heifers

Due in September

ID	Due
724	9/1
726	9/19
727	9/1
729	9/15
730	9/1
737	9/15
738	9/15

## 5

5 Holstein Bred Heifers

Due in October

ID	Due
713	10/27
716	10/13
728	10/27
735	10/27
736	10/27

## 6

3 Holstein Bred Heifers

Due in November

6	Due
712	11/24
715	11/10
731	11/10



# Dawn-Til-Dusk

7

7 Fresh Holstein Heifers  
Fresh 5-17 to 6-25 | Avg 85#

Milking Herd & Bred Heifer Dispersal | Mason, MI  
Tank Avg 82# 4.1%F 3.1%P SCC-160K  
Parallel Parlor | Freestall | DHIA  
Vaccinated w/Bovishield Gold 5 L5 HB & Scourguard 4KC  
Dry Treated w/ Orbenin DC

ID	Fresh	Milk	Fat%	Pro%	SCC	Lact	305ME	Bred	R	Due	ServSire	SireCode	MGSCode	U	F	L	F	B	Comment
126	5/17/21	88	4	2.8	14	1	25010	7/30	B	5/6	7AN408	7HO11893	7HO10204	5	4	4	3	3	5 STAR
1565	6/1/21	84	4	3	71	1	25813					7HO13567	HBHMER	4	4	4	3	3	4 STAR
1572	6/1/21	84	3.7	2.7	54	1	25616					HBFRANK		4	4	4	2	3	4 STAR
1576	5/23/21	88	4.5	3	25	1	24414	7/30	B	5/6	7AN408	7HO12014	7HO8036	4	4	4	2	2	4 STAR
1582	5/30/21	90	3.6	2.7	22	1	25945	8/11	B		7H14124	HBROD	HBBUCK	5	3	4	3	2	5 STAR
1610	6/28/21	80	3.7	2.7	81	1	26331						7HO11767	5	4	4	3	2	5 STAR
1611	6/25/21	86	3.1	2.6	62	1	27335						HB	5	4	4	2	2	5 STAR

8

3 Fresh 2nd Lact Holstein Cows  
Fresh 6-1 to 7-19 | Avg #

ID	Fresh	Milk	Fat%	Pro%	SCC	Lact	305ME	Bred	R	Due	ServSire	SireCode	MGSCode	U	F	L	F	B	Comment
1537	6/1/21	92	3.8	3.1	93	2	30024	8/5	B		7AN408	7HO12175	HBLEROY	4	3	4	2	2	4 STAR
1540	6/16/21	92	4.2	2.7	13	2	26584						7HO10796	4	3	3	3	2	4 STAR
1542	7/19/21	88	4.7	2.9	23	2	25236						7HO10796	4	3	4	3	3	4 STAR

9

4 Fresh 3rd Lact Holstein Cows  
Fresh 7-3 to 6-19 | Avg 105#

ID	Fresh	Milk	Fat%	Pro%	SCC	Lact	305ME	Bred	R	Due	ServSire	SireCode	MGSCode	U	F	L	F	B	Comment
11	7/3/21	109	3.5	2.6	13	3	29385						7HO10204	3	3	3	4	2	
1402	6/6/21	107	3.5	2.7	13	3	27704					7HO10272	7HO7839	3	3	3	3	2	
1426	6/15/21	94	2.9	2.7	200	3	31213	8/15	B		7AN408			3	3	3	4	2	
1456	6/19/21	111	3.3	2.9	76	3	33781					7HO10804	7HO9346	3	3	3	4	2	

## Individual Lots (10 or 11 + ID Number)

ID	Fresh	Milk	Fat%	Pro%	SCC	Lact	305ME	Bred	R	Due	ServSire	SireCode	MGSCode	U	F	L	F	B	Comment
114	2/11/21	92	3.5	3.1	54	2	31137	5/23	P	2/27	7HO12605	7HO10709		3	3	3	3	2	
121	2/13/21	63	4.3	3.4	19	2	22949	5/20	P	2/24	7HO13504			3	3	2	3	2	
125	7/25/21	65	4.9	3.1	29	2	27113						HBHMER	3	3	3	3	2	
1317	Dry					4	27899	11/23	P	8/30	7HO12605	HBTIGER	7HO9265	4	3	3	4	5	
1328	3/21/21	117	4.2	2.9	13	4	28836	8/12	B		7AN408	7HO8778	HBTOMAS	3	3	4	5	2	
1357	Dry					4	23381		P			7HO10248		4	3	3	4	4	
1366	Dry					3	31017	1/4	P	10/13	7XX408			3	3	3	4	5	
1383	6/5/21	101	3.6	2.9	132	4	25313					HBHAMMER	7HO10467	3	3	4	4	3	Procross
1395	Dry					2	31187	12/14	P	9/20	HBTBONE	7HO10176	7HO8778	4	3	3	5	4	
1415	11/21/20	80	3.4	2.9	22	3	31485	2/13	P	11/20	7HO13504	HBHMER	HBLEVI	3	3	2	3	5	
1416	4/5/21	103	4.1	3	13	3	30757	6/11	P	3/18	7HO13504	7HO13257		4	3	4	5	3	LLF   Red & White
1419	1/23/21	107	2.6	2.9	54	3	32950	7/16	B		7AN408	7HO12484	HBLEVI	3	3	4	3	2	
1422	4/17/21	94	3.7	3.1	13	3	23086	7/23	B		14H14369	7HO12344	7HO8223	3	4	4	4	2	Teats Point Out
1423	4/26/21	118	3.3	2.7	13	3	34443	7/17	B		7HO14124		HBLEROY	3	3	3	4	2	
1436	8/8/21					3	28732					7HO12344		3	3	3	3	2	
1445	6/22/21	103	2.8	2.7	14	3	30466					7HO10796	7HO9270	4	3	4	2	2	4 STAR
1446	8/6/21					3	22212					7HO13257	7HO9270	3	3	3	3	4	Jersey X
1448	4/17/21	75	4.7	3.1	15	3	20170	5/20	P	2/27	7AN408	7HO10796	HBBLUE	4	3	4	3	2	
1453	5/31/21	96	3.3	2.7	20	3	25477						7HO8778	4	3	3	4	2	
1455	6/23/21	67	3.8	2.9	18	3	19928					7HO10804	HBFERB	3	3	2	3	2	
1460	6/10/21	82	5.1	2.9	13	3	21916					7HO12344	HBLEVI	4	3	3	4	3	
1461	Dry					2	26048	11/11	P	8/20	HBTBONE	7HO11767	HBWALTER	3	3	3	4	3	
1472	Dry					1	26109	11/14	P	8/21	7HO12605	7HO10709	HBBLUE	4	4	4	5	4	
1475	5/29/21	63	4.9	2.9	18	2	26225	8/5			7H12659	7HO10709	7HO9064	3	3	3	3	2	
1489	7/7/21	88	4.4	2.9	38	2	25254							3	3	3	3	3	Long Teats
1490	7/5/21	105	4.5	2.8	13	2	26048					7HO12189	7HO8223	3	3	3	3	3	Quarterd / Walk
1492	4/21/21	96	3.3	2.7	14	2	28986					7HO12175	HBLEVI	3	3	4	4	3	
1493	1/21/21	61	4.6	3.4	13	2	25990	5/11	P	2/15	7HO12978		7HO10248	3	3	3	4	3	

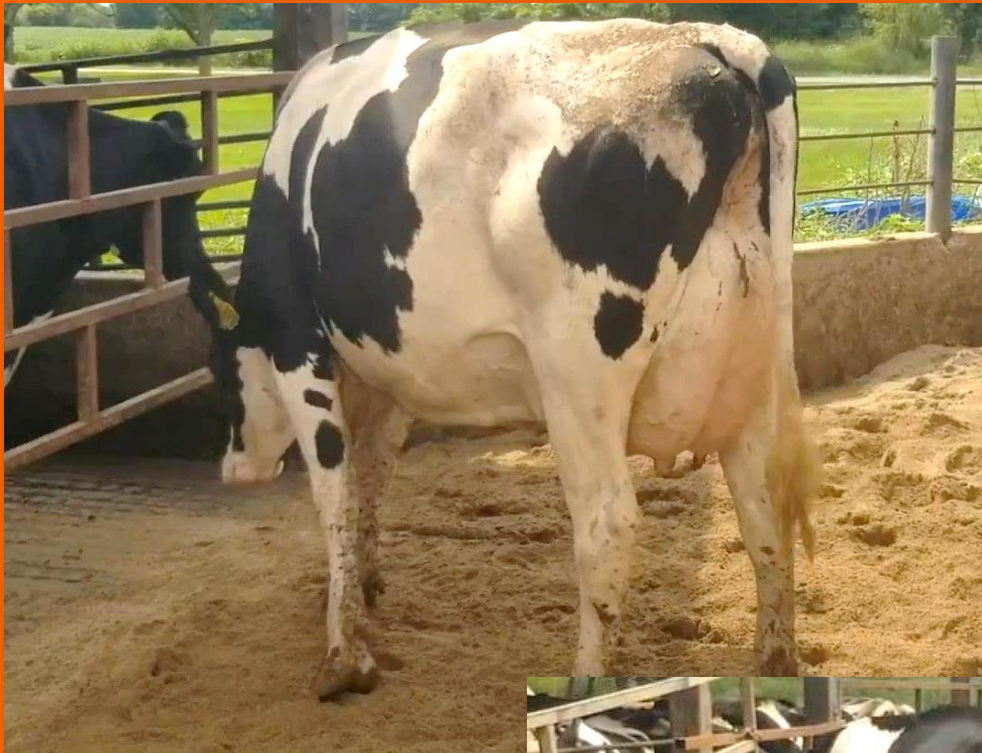
ID	Fresh	Milk	Fat%	Pro%	SCC	Lact	305ME	Bred	R	Due	ServSire	SireCode	MGSCCode	U	F	L	F	B	Comment
1502	Dry					1	27254	1/16	P	10/23	7HO14124	7HO10709	HBHMER	3	3	3	4	5	
1505	3/19/21	111	3.5	3.1	93	2	30838	8/15	B		7H14124	7HO12344	7HO8223	4	3	3	4	2	
1507	6/27/21	130	3.7	2.6	47	2	29455					7HO10796	7HO9270	3	3	3	4	3	
1511	4/29/21	90	4.4	3	31	2	27009	7/14	B		7HO13504	HBROCK	HBTYRONE	4	3	4	3	2	
1516	11/29/20	54	4.3	3.1	200	1	22640	3/31	P	1/5	7HO13504		7HO9989	3	3	3	3	2	Light Left Rear
1518	6/22/21	59	2.9	2.5	13	2	21700						7HO11893	3	3	3	2	1	
1519	6/22/21	86	4.1	2.7	18	2	26513						HBBUCK	3	3	4	3	2	
1520	5/17/21	109	3.5	3	13	2	25111	7/17	B		7HO12605	7HO12344		3	4	3	3	3	Red Monty
1522	7/17/21	67	4.6	3.2	141	2	23776					7HO11767	HBWALTER	3	4	4	3	3	
1524	8/6/21					2	20152					HBFRANK		4	4	4	3	5	
1526	7/17/21	86	9.2	2.8	348	2	20961					7HO11893	7HO9270	4	3	3	3	2	4 STAR
1527	2/8/21	86	3.6	3.1	62	1	27086	8/11	B		7H12659	7HO11985	HBTYRONE	4	3	4	3	3	
1528	9/21/20	71	4.1	3	33	1	33048	4/8	P	1/13	7HO12602	7HO11985	HBTYRONE	4	4	4	3	2	
1529	7/25/21	90	4.3	3.4	33	2	27151					HBROCK		3	3	3	3	2	
1530	6/22/21	80	4.2	2.9	123	2	23348					7HO11893		5	4	4	3	3	5 STAR   Jersey X
1532	6/22/21	90	4.2	3	14	2	27557					7HO11985	7HO8778	5	3	4	3	2	
1534	Dry					1	21377	1/23	P	10/30	HBTBONE	HBFRANK	7HO9229	3	4	4	3	3	Xbred
1536	6/30/21	97	3.3	2.7	15	2	26970					7HO12175		4	3	3	3	2	Teats Point Out, Bif T
1543	6/23/21	73	3.5	3.1	38	2	29845						HBHMER	3	3	3	4	2	White Head
1545	1/5/21	76	4.7	3.2	54	1	24734	3/15	P	12/20	7AN408		HBHMER	3	3	4	2	3	
1550	1/23/21	90	3.4	3.2	373	1	28659	5/11	P	2/17	7XX12978	7HO11767	HBHMER	4	4	4	3	3	
1551	1/21/21	61	4.8	3.2	14	1	23434	7/31	B		7AN408	HBROD		4	3	3	3	2	
1553	12/10/20	73	3.5	3.2	123	1	27930	2/12	P	11/19	7HO1260	7HO11767		4	2	3	3	3	Needs Feet Trimmed
1555	Dry					1	26383	12/28	P	10/4	7HO12604	7HO12126	7HO12031	5	4	4	3	3	
1559	1/15/21	86	4.6	3	13	1	29530	7/30	B		7AN408	HBFRANK	7HO9443	4	3	3	2	2	
1564	6/1/21	86	3.8	2.9	100	1	26221	8/17	B		7H12659	HBRANK		5	3	4	2	3	Jersey X
1568	3/11/21	76	4.1	3.2	23	1	26314	7/16	B		7AN408		7HO12344	5	4	4	3	2	Fzen Ears
1569	4/12/21	67	3.2	1.3	348	1	21192	6/12	P	3/19	7HO13504		7HO10804	5	4	4	2	2	Deep Rib
1570	5/9/21	76	3.1	2.8	20	1	23204	8/11	B		7AN408			3	3	3	3	2	LLF, Slight LLR
1571	3/14/21	82	4.1	3	50	1	25368	8/14	B		7H12659	7HO12228	HBHMER	5	4	3	4	3	
1573	4/2/21	90	5.1	3.1	66	1	28473	8/16	B		7HO14124	7HO12014		4	4	4	3	2	
1574	3/24/21	88	3.5	2.6	13	1	27540	6/15	P	3/22	14H14369	HBFRANK	7HO8350	3	3	3	3	2	
1577	5/9/21	63	4.4	3.1	19	1	21342	8/6			7H12659	HBROD	7HO10709	5	4	4	2	2	4 STAR   Rev Tilt
1578	6/14/21	71	4.5	2.8	14	1	22638					7HO12014	HBWALTER	5	4	4	2	3	5 STAR   Jersey X
1579	5/23/21	59	5.4	3.2	18	1	19270					HBROD	7HO13257	3	3	4	2	2	Light Left Rear
1580	6/26/21	78	4.1	2.7	31	1	24663					HBFRANK	7HO9064	4	4	4	2	2	
1581	6/22/21	61	4.7	2.7	152	1	21143					7HO12014	7HO9265	4	3	4	3	2	4 STAR
1583	6/1/21	103	3.2	2.7	800	1	31123	7/30	B		7AN408		7HO8350	4	4	4	3	3	4 STAR/ High SCC
1586	5/11/21	71	3.6	3.1	47	1	22803	8/5	B		7H14125	HBROD	7HO10796	5	4	4	3	2	4 STAR
1587	7/3/21	67	4.5	2.8	54	1						HBROD		4	3	3	2	3	
1588	6/11/21	71	2.7	3	13	1	22914	8/16	B		7H14125	HBROID	7HO11767	4	4	4	3	2	
1589	5/27/21	84	4	2.8	38	1	24571	7/30	B		7HO14124		HBTYRONE	3	2	2	3	2	
1590	5/19/21	71	3.7	2.8	33	1	21869	8/14	B		7H12659	7HO11893	7HO9270	4	3	3	2	3	
1591	5/17/21	69	3.7	2.6	13	1	22962	7/30	B		7AN408		HBBUCK	4	3	4	3	2	4 STAR
1592	5/18/21	86	3.8	3	152	1	26438					7HO12236	HBHMER	4	3	3	3	2	4 STAR
1594	8/11/21					1								3	3	3	3	3	
1595	6/22/21	63	4.3	2.9	22	1	21755					HBFRANK	7HO11893	4	3	4	2	2	
1596	7/8/21	82	4.5	2.8	66	1						7HO12236		5	4	4	3	3	4 STAR   White Head
1597	7/14/21	67	4.1	2.5	57	1						HBFRANK	7HO9229	4	3	3	3	2	
1598	6/11/21	61	3.7	2.3	13	1	21720						7HO11767	4	4	2	3	2	Srait Leg
1600	6/22/21	57	4.4	2.9	54	1	20425						7HO10804	5	3	3	2	2	
1601	6/11/21	65	4.2	3.2	87	1	22649					7HO12014		5	4	4	2	2	
1603	7/12/21	80	4.5	2.8	132	1							7HO10709	5	3	4	2	3	5 STAR
1605	6/30/21	67	4.1	3.1	76	1						HBFRANK	7HO9443	4	4	4	3	3	4 STAR
1609	6/27/21	61	4	2.8	31	1	21792						7HO10804	4	3	4	1	2	
1613	6/14/21	63	4.6	3	62	1	21134							3	4	3	2	3	
1622	Bred Heifer	Preg 5 Months (ANGUS)								8/31	12/12/19	7HO11985		1348		23722			Smaller Framed
1624	Bred Heifer	Preg 6-6 1/2 Months (ANGUS)								6/14	12/24/19	7HO12014	7HO10272	1403		33081			Jersey X

## 12 7 Holstein Bred Heifers Bred 6+ Months to ANGUS

ID		Repro	pNM\$	BrthDate	SireCode	MGSCode	Dam	305me	Comment
1602	Bred Heifer	Preg 6-6 1/2 Months (ANGUS)	177	7/13/19	7HO12014		1260		
1614	Bred Heifer	Preg 6-6 1/2 Months (ANGUS)	116	7/17/19	7HO11893	HBWALTER	1465	25246	
1615	Bred Heifer	Preg 6-6 1/2 Months (ANGUS)	106	9/18/19	7HO11893	7HO9270	1192	30474	
1617	Bred Heifer	Preg 6-6 1/2 Months (ANGUS)	-84	10/19/19	7HO12228	7HO8778	1220	22954	
1619	Bred Heifer	Preg 6-6 1/2 Months (ANGUS)	244	11/15/19	7HO11985	7HO10248	1357	23381	
1620	Bred Heifer	Preg 6-6 1/2 Months (ANGUS)		12/16/19			1411	22235	
1621	Bred Heifer	Preg 6-6 1/2 Months (ANGUS)	200	11/20/19	7HO11985	7HO10796	1392	24397	

## 13 3 Holstein Bred Heifers Bred 4-5 Moths to ANGUS

ID		Repro	pNM\$	BrthDate	SireCode	MGSCode	Dam	305me	Comment
116	Bred Heifer	Preg 4 Months (ANGUS)							
127	Bred Heifer	Preg 5 Months (ANGUS)							
1626	Bred Heifer	Preg 4 Months (ANGUS)		2/10/20	7H121014		1404	25455	



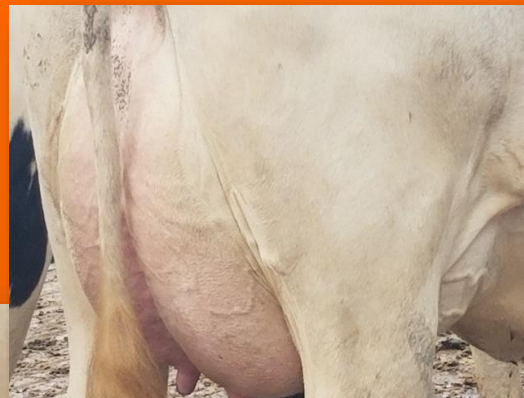
14

Pick at Least 10 2nd Lact Holstein Cows From The Group of 12 (Will Sub if Needed)

Fresh 4-18 to 7-29 | Group Avg 104#

ID	Fresh	Milk	SCC	Lact	Bred	R	Due
912	5/13	112	13	2	7/26		
919	5/12	115	33	2	7/24		
948	6/21	83	76	2			
961	6/8	114	54	2			
990	7/23	94	13	2			
992	6/25	96	20	2			
996	6/8	107	13	2	7/6		
999	4/18	118	13	2	7/27		
1016	7/21	110	13	2			
1018	7/20	88	15	2			
1034	7/22	117	33	2			
1046	7/29	97	18	2			

Roth Farms

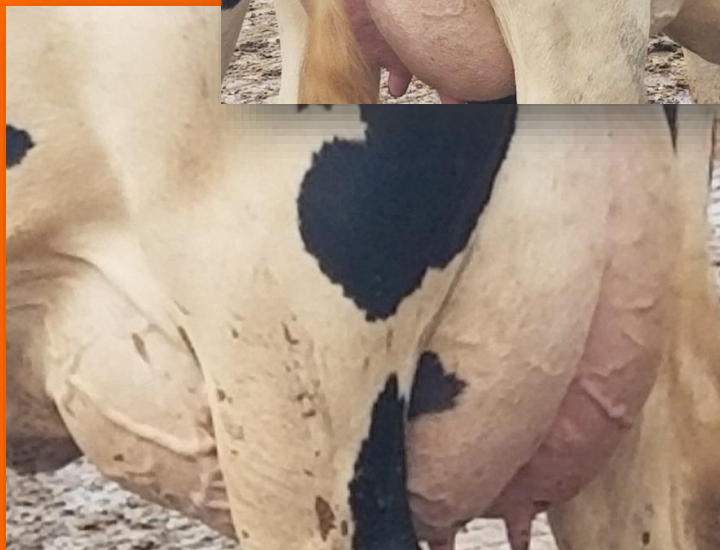
Parlor | Freestall | AI | Complete Vac & Herd Health  
Lowell, MI | Paul Warner 517-231-8424

15

Pick at Least 10 1st Lact Holsteins from the Group of 15 (Will Sub if Needed)

Fresh 4-11 to 6-27 | Group Avg 87# |

ID	Fresh	Milk	SCC	Lact	Bred	R	Due
1125	5/31	105	14	1			
1132	4/17	97	13	1	5/26	Preg	3/3
1171	4/11	85	19	1	6/22		
1177	5/7	93	29	1	7/28		
1180	6/8	71	115	1	7/27		
1198	6/12	81	31	1			
1203	6/8	73	62	1	6/22		
1206	6/18	84	57	1			
1211	6/27	86	19	1			
1216	6/2	80	141	1	7/27		
1220	5/14	89	14	1	7/24		
1222	6/2	88	18	1	7/20		
1223	5/20	81	13	1	7/23		
1234	5/29	97	13	1	7/25		
1239	6/17	93	13	1			



16

Pick at Least 12-15 1st Lact Holsteins from the Group

Fresh 5-29 to 8-16

ID	Fresh	Lact	Bred		Bred	R	Due
980	5/29/21	1	8/12		Lustra		
988	6/10/21	1	8/1		Lustra		
981	6/18/21	1			Biby		
992	6/9/21	1			McCad		
993	6/18/21	1			Simplicity		
995	6/19/21	1			Simplicity		
996	6/13/21	1			Simplicity		
999	6/9/21	1			Simplicity		
9100	6/27/21	1			Simplicity		
9102	6/10/21	1			Simplicity		
9108	6/9/21	1	8/18		Drastic		
9110	6/29/21	1			Drastic		
9112	6/16/21	1			HB		
9122	8/3/21	1			Bighit		
9132	7/28/21	1			Simplicity		
9133	7/21/21	1			Avery		
9137	7/24/21	1			Simplicity		
9146	8/16/21	1			Simplicity		
9152	8/10/21	1			Luster		
9124	7/21/21	1			Boby		
983	6/2/21	1			Nebulus		
990	6/9/21	1			Macho		

Vlietstra

Parlor | Freestall | AI | Complete Vac & Herd Health  
Kalamazoo, MI | Paul Warner 517-231-8

## 17 5 Fresh Holstein Heifers (4 STARS)

Fresh 7-3 to 7-25 | Avg 78#

ID	Fresh	Milk	Fat%	Pro%	SCC	Lact	Bred	ServSire	Sire
1509	7/25	80	3.4	2.9	54	1			
1519	7/16	78	3.7	3	152	1			
1521	7/18	80	2.9	2.9	93	1			
1579	7/16	75	3.9	3	76	1			
5119	7/3	76	3.9	2.9	50	1			

## 18 2 Fresh Holstein Heifers (Big Frame's)

Fresh 7-8 & 7-16 | Avg 83#

ID	Fresh	Milk	Fat%	Pro%	SCC	Lact	Bred	ServSire	Sire
2417	7/16	82	2.6	2.5	20	1			
5135	7/8	84	3.2	2.7	38	1			

## 19 6 Fresh Holstein Heifers

Fresh 5-24 to 6-7 | Avg 79#

ID	Fresh	Milk	Fat%	Pro%	SCC	Lact	Bred	ServSire	Sire
1508	5/24	75	3	2.9	50	1	8/10	7SM100	
1531	6/7	73	3.7	3.1	47	1	8/14	7HO12896	
1575	6/3	80	3.4	2.8	66	1			
5082	5/24	87	3.6	2.8	54	1	8/7	7SM100	
5120	5/25	87	3.2	3.1	29	1			
5139	5/27	73	4	2.9	13	1	8/13	7SM100	

## 20 8 Fresh Holstein Heifers (4 STARS)

Fresh 5-14 to 6-15 | Avg 83#

ID	Fresh	Milk	Fat%	Pro%	SCC	Lact	Bred	ServSire	Sire
1553	6/15	78	2.1	2.9	460	1	8/14	7HO14330	
1561	6/6	86	3.9	3	200	1			
1572	6/16	95	3.3	3.1	123	1			7HO13284
1908	7/2	73	2.7	3.1	15	1			
1914	5/14	80	2.8	3.1	57	1	8/14	7SM100	
5131	6/18	87	3.1	2.7	19	1			
5141	6/16	84	3.5	3.1	141	1			
5146	6/21	78	3.2	2.6	132	1	8/13	7SM100	

## 21 5 Fresh Holstein Heifers

Fresh 5-19 to 6-15 | Avg 75#

ID	Fresh	Milk	Fat%	Pro%	SCC	Lact	Bred	ServSire	Sire
1081	6/15	73	3.7	2.8	22	1			
1549	6/15	75	3	2.7	66	1			
1566	5/29	71	3.6	3.1	47	1			7HO12897
5144	5/19	82	3.9	3	19	1			
5126	5/27	75	3.3	3.3	14	1	8/12	7SM100	

## 22 6 Fresh Holstein Heifers

Fresh 6-25 to 7-3 | Avg 66#

ID	Fresh	Milk	Fat%	Pro%	SCC	Lact	Bred	ServSire	Sire
1511	6/13	64	4.4	3	44	1			
1539	6/12	58	3.2	2.8	18	1			
1555	7/3	75	2.3	2.9	15	1			
1556	7/3	67	3.8	3.2	33	1			
1562	6/13	73	3.4	3.1	115	1			
1565	6/25	69	3.7	3	214	1			7HO13284

## Red & White Single Lot

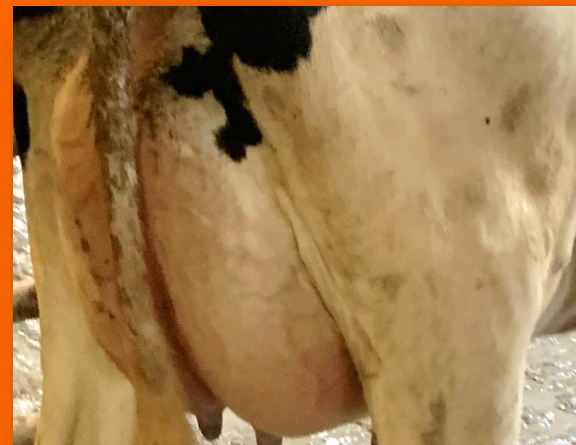
ID	Fresh	Milk	Fat%	Pro%	SCC	Lact	Bred	ServSire	Sire
1518	5/25	76	2.9	3.2	80	1			

# Stone Road

Parlor | Freetsall | Complete Vac's & Herd Health

Located: Snover, MI | Chad Kreeger 517-294-3484

Buyer can sort within each group



# 1600

15-20 Holstein Springers

Some Bred AI to Select Sires Bulls

All Preg 7-8 Months

Herd Recently sold and was avg 96# of Milk !!

# Wes Zimmerman

Freetsall | Complete Vac's & Herd Health

Located: Goshen, IN | Brian Landis 574-536-5026

Buyer can sort within each group

