

SEE DAIRY

Complete ONLINE Dispersal

1-29-25 | www.kreegerdairy.com | MACY, IN

SEE DAIRY

Complete ONLINE Dispersal

1-29-25 12-1 PM ET

Bid Online or On The Phone

www.kreegerdairy.com

Load Out 1-30-25 @ The Farm

419 E 1100 N Macy, IN

There will be a link to click on the auction page to enter the sale site to View The Videos and Information for Each Lot, Register for The Sale, Bid, & or Watch. The Sale opens for bidding at 12PM and begins closing at 1PM, but the site is available to view the videos and information ahead of the sale.

Sale Coordinator

Brian Landis 574-536-5026

Sale Team

Chad Kreeger 517-294-3484

Paul Warner 517-231-8427

Clay Papoi 517-526-1917

Dave Whelen 517-403-7219

Shaun Hyde 989-287-2660

Gabe Papoi 989-444-8275

David Bennett 989-286-7244

Jason Cast 402-641-2255

Please contact any member of the sale team to place bids on the phone or with questions on the cattle or the sale process.

Terms: Payment by Good Check or Wire before loading.

No Buyers Premium | Trucking Available

Will Test For Interstate Transit After The Sale

Parabone Parlor | Sand Stalls Freestall Housed
Complete Vaccinations & Herd Health w/ DVMS

Sale Managed By

Kreeger
and Associates, LLC

Box 42 Cass City, MI 48726
chadkreeger@hotmail.com
517-294-3484

Owners

SEE DAIRY

The See Family

419 East 1100 North

Macy, IN

Bryant 574-727-4961

Terms & Conditions

Bidding & Sale Process: The Sale will be conducted in an internet auction format. You can bid online or any member of the sale team can bid for you or have you on the phone during the sale. The Sale begins closing at 12:00 PM, Each Minute one lot closes in lot order. The system does have a bid extension and the lot will close when one minute passes without any increased bids on that lot. The sale will continue to close in order, even if there is overtime bidding on one or multiple lots. When the lot closes the high bid will be the buyer

All Lots sell with 100% Buyer satisfaction

If the buyer does not like the cattle after viewing them prior to loading at the sellers farm, they do not have to take ownership of them, however once they are loaded and leave the sellers farm they are sold on an "As Is" basis with no warranty, expressed or implied and are the property of the buyer. For lots listed as "Sort At Loading"—we will sort any off that need to be, therefore the head count may vary. Lots will sell by the head multiplied by the number of head in each specific lot for the total lot price. If other selling terms are used on a lot it will be listed on that lot description, Example: Selling by the pound multiplied by the total weight of the lot weighed on the truck.

Payment Terms

All cattle must be paid for in full before they are loaded.

Payment must be made in good check or wire transfer to Kreeger and Associates, LLC. The buyer will be invoiced for the full amount. Kreeger and Associates will hold the funds until the cattle are loaded. If any difference after loading the balance will be refunded. All bids are in US funds.

Trucking Details: Kreeger and Associates, LLC will assist with load outs and handle arrangements for the trucks.

Health Warranty: Proper health certificates will be provided when required any additional testing cost will be the responsibility of the buyer. The results of any future health test is not guaranteed. No animal is warranted to be free of Johnes or any other infectious disease. For animals that travel outside of the state of origin the buyer will be responsible for the legal importation of cattle into that state, please check prior to the sale.

Errors: The material printed in this catalog has been carefully edited. If any errors or omissions are discovered, they will be posted a www.kreegerdairy.com and changed in the auction system. Such announcements take precedence over printed material. This information is provided by the owners and DHIA Records and is believed to be correct, however, it is not guaranteed. This sale will be controlled by an auction program. Kreeger and Associates, LLC is not responsible for malfunction or system errors which cause a bid or bidder to fail to be recognized or registered. Some of the animals shown in a lot video may have been moved to a different lot allowing for truck load capacity and reproductive status.

General: It is the intention of the owners and the sale management to represent and present these animals in their present condition, however No adjustments will be made after the animal's leave the sellers farm. Females announced as pregnant were found to be pregnant by a licensed veterinarian. No guarantee is made or implied that the pregnancy will go full term. Cattle that are sold with a natural service date are as accurate as possible, although they are not guaranteed to be exact.

Disclaimer: Any person bidding on items in the auction agrees to these terms and conditions and understands that, by bidding, they are entering into a legal binding contract between themselves and the seller(s) and that they will be held financially responsible for their actions. This includes those people representing parties not present at the sale. Neither the owners, auctioneers, sale manager nor other affiliated personnel may be held responsible for any accidents that may occur. Kreeger and Associates, LLC acts only as an agent between buyer and seller and may not be held responsible for any livestock or merchandise. It is to be clearly understood that Kreeger and Associates, LLC and its representatives act only as a medium between buyer and seller, and may not be held liable, financially or otherwise, for any failure in any obligations set forth in this sale.

Internet Description Score (IDS)

This is just one persons opinion to help describe each cow. The higher the number the better she is, with 3 being an average good looking & working functional cow.

(U) Udder 1- 5 | (F) Feet 1- 5 | (L) Legs 1- 5 | (S) Stature 1- 5 | (B) Body Condition 1 Thin - 5 Fat | (W) Weight Estimate
5 STAR- This is based on there (IDS) and production and reproduction information. A Five Star best combines it all!

4 STAR- Almost a 5, but not quite!

Internet Description Codes (IDC)



5 Star Cow



4 Star Cow



Milking 100# +



High Cow in The Herd



Pregnant



5 Star Udder



4 Star Udder



Slight Wide Rear Teats



Slight Imbalanced Udder



Slight Light Right Front Quarter



Slight Limp or Walk



Slight Light Left Rear Quarter



Somatic Cell Count 300K-499K



Slight Light Right Rear Quarter



Slight Need Feet Trimmed



Slight Light Left Front Quarter



Wide Rear Teats



3 Quarter Left Front



Wide Front Teats



Light Right Rear Quarter



3 Quarter Right Front



Need Feet Trimmed



Light Left Front Quarter



3 Quarter Left Rear



Light Right Front Quarter



3 Quarter Right Rear



Light Left Rear Quarter



Limp or Walk



Severe Reverse Tilt



Lame Feet



Imbalanced Udder



Somatic Cell Count 500K+



Gold Star Herd



Diamond Grower



Genetic Focus Herd



Reputation Grower



AI Service Sire ID



Identified AI Sires



Genomic Tested



Parent Average



3X Milking



2X Milking



Parallel Parlor



Herringbone Parlor



Rotary Parlor



Sell By The Pound



Complete Vaccination Herd Health



Vaccinated

1 9 Fresh Heifers Fresh 12-12 to 12-31															
ID	Fresh						Due	BrthDate	4	4	3	4	3	13	Comment
		Milk	Fat%	Pro%	SCC(K)	Lact			U	F	L	B	S	W	
580	12/24/24					1	Exposed	10/13/22	3	4	3	3	3	13	
587	12/18/24					1	Exposed	10/25/22	3	5	2	4	3	13	
588	12/27/24					1	Exposed	11/4/22	3	3	3	3	3	13	
592	12/22/24					1	Exposed	11/23/22	4	4	3	3	3	13	★★★★Udder
593	12/20/24					1	Exposed	11/25/22	4	3	3	3	3	13	★★★★Udder
598	12/17/24					1	Exposed	12/12/22	4	3	3	5	3	14	★★★★Udder
599	12/12/24					1	Exposed	12/14/22	4	4	3	5	3	13	★★★★Udder
601	12/14/24					1	Exposed	12/20/22	3	3	3	3	3	13	
604	12/31/24					1	Exposed	12/30/22	4	3	3	3	3	12	★★★★Udder
2 10 Fresh Heifers Fresh 1-1 to Sale Day															
ID	Fresh						Due	BrthDate	4	4	3	4	3	13	Comment
		Milk	Fat%	Pro%	SCC(K)	Lact			U	F	L	B	S	W	
503	Sells Fresh					1		11/6/21	4	3	3	5	3	14	★★★★Udder
509	Sells Fresh					1		12/12/21	4	3	3	3	4	14	★★★★Udder
530	Sells Fresh					1		2/11/22	3	5	4	4	3	14	
574	Sells Fresh					1		9/13/22	3	3	3	5	4	13	
589	Sells Fresh					1		11/15/22	4	3	3	3	3	13	Red & White 4★Udder
591	1/4/25					1		11/22/22	3	4	3	4	3	13	
600	1/1/25					1		12/19/22	3	4	3	4	3	13	
605	Sells Fresh					1			4	3	4	5	4	13	★★★★Udder
606	1/10/25					1		1/2/23	4	4	3	4	3	13	★★★★Udder
608	Sells Fresh					1		1/9/23	3	3	3	3	3	14	
3 2 Fresh 2nd Lact Cows Fresh 12-18 & 12-26															
ID	Fresh	100	4.4	3.2	10	2	Due	BrthDate	4	4	4	5	3	14	Comment
		Milk	Fat%	Pro%	SCC(K)	Lact			U	F	L	B	S	W	
489	12/26/24	98	4.5	3.1	18	2	Exposed	9/24/21	4	4	3	5	3	14	★★★★Udder
502	12/18/24	101	4.3	3.2	2	2	Exposed	11/3/21	3	4	4	5	3	14	
4 3 Fresh 2nd Lact Cows Fresh By Sale Day															
ID	Fresh						Due	BrthDate	3	3	3	4	4	14	Comment
		Milk	Fat%	Pro%	SCC(K)	Lact			U	F	L	B	S	W	
365	Sells Fresh					2		5/22/20	3	3	2	4	5	15	
403	Sells Fresh					2		12/2/20	4	3	3	4	4	14	★★★★Udder
479	Sells Fresh					2		8/3/21	3	4	3	4	4	14	
5 4 Fresh 3rd Lact Cows Fresh 12-5 to 1-9															
ID	Fresh						Due	BrthDate	3	4	4	4	4	14	Comment
		Milk	Fat%	Pro%	SCC(K)	Lact			U	F	L	B	S	W	
385	1/9/25					3	Exposed	10/21/20	3	4	4	4	5	14	
405	12/10/24					3	Exposed	12/6/20	3	4	4	3	3	13	
410	12/5/24	114	3.8	2.9	3	3	Exposed	12/18/20	4	2	3	4	3	14	★★★★Udder
424	1/8/25					3	Exposed	2/20/21	3	4	4	5	3	16	
6 4 Fresh 3rd Lact Cows Fresh 10-6 to 11-10															
ID	Fresh	89	4.9	2.9	46	3	Due	BrthDate	3	3	3	4	3	14	Comment
		Milk	Fat%	Pro%	SCC(K)	Lact			U	F	L	B	S	W	
363	11/10/24	81	6.4	2.8	14	3	Exposed	5/21/20	3	3	3	4	3	14	
375	10/16/24	81	4.9	2.9	58	3	Exposed		3	3	3	4	3	14	
383	10/6/24	85	4.1	3.1	10	3	Exposed	10/8/20	3	2	3	4	3	13	
404	10/21/24	108	4.4	2.7	103	3	Exposed	12/2/20	3	3	3	4	3	14	
7 3 Preg 1st Lact Heifers Due 5-4 to 6-18															
ID	Fresh	69	4.9	3.7	13	1	Due	BrthDate	5	4	3	4	4	14	Comment
		Milk	Fat%	Pro%	SCC(K)	Lact			U	F	L	B	S	W	
507	11/5/23	75	3.4	3.5	7	1	5/4	12/6/21	5	4	3	5	4	14	★★★★★Udder
521	12/25/23	64	6.7	4.3	15	1	6/18	1/3/22	5	4	3	4	4	14	★★★★★Udder
541	5/10/24	69	4.6	3.2	16	1	5/9	4/3/22	5	4	4	4	4	14	★★★★★Udder

8 5 Preg 1st Lact Heifers Due 7-1 to 8-20															
ID	Fresh	65 Milk	4.4 Fat%	3.0 Pro%	21 SCC(K)	1 Lact	Due	BrthDate	4 U	3 F	3 L	3 B	3 S	13 W	Comment
556	7/28/24	64	4.2	3.1	10	1	8/10	6/26/22	3	3	3	2	2	11	
558	7/30/24	52	4.6	2.6	21	1	8/20	7/26/22	3	3	3	2	3	13	Xbred
563	8/29/24	95	3.8	2.8	6	1	7/10	8/16/22	4	3	3	4	3	14	★★★★Udder
568	9/13/24	59	5.3	3.2	32	1	7/1	8/28/22	4	3	3	3	2	14	★★★★Udder
571	8/23/24	56	4.0	3.2	38	1	8/20	9/11/22	4	4	4	3	3	12	★★★★Udder
9 5 Preg 1st Lact Heifers Due 8-30 to 9-21															
ID	Fresh	66 Milk	4.4 Fat%	3.2 Pro%	52 SCC(K)	1 Lact	Due	BrthDate	3 U	3 F	3 L	3 B	2 S	13 W	Comment
560	7/24/24	52	4.6	3.3	26	1	9/13	7/28/22	4	2	3	2	2	12	Red & White 4★Udder
569	8/28/24	72	3.6	2.9	168	1	9/14	9/5/22	4	4	4	3	3	15	★★★★Udder
576	10/24/24	72	3.7	3.0	13	1	8/30		3	4	3	3	2	13	
582	10/8/24	68	5.5	3.3	32	1	9/8	10/16/22	3	4	3	3	2	12	
583	10/26/24	66	4.9	3.6	21	1	9/21	10/17/22	3	3	3	2	2	12	
10 2 Preg Cows LACT COMBO (1st & 2nd) Due 7-20 & 9-9															
ID	Fresh	79 Milk	4.5 Fat%	3.1 Pro%	23 SCC(K)	2 Lact	Due	BrthDate	3 U	4 F	4 L	3 B	3 S	13 W	Comment
462	6/30/24	93	4.7	3.3	12	2	7/20	6/6/21	3	4	4	3	3	13	WFT
585	10/10/24	64	4.4	3.0	34	1	9/9	10/25/22	3	3	3	3	2	12	WFT
11 3 Exposed 1st Lact Heifers Fresh 8-25 to 8-29															
ID	Fresh	53 Milk	5.1 Fat%	3.1 Pro%	298 SCC(K)	1 Lact	Due	BrthDate	3 U	3 F	3 L	3 B	3 S	13 W	Comment
570	9/7/24	56	6.0	3.5	142	1	Exposed	9/9/22	4	3	2	3	3	13	★★★★Udder
584	10/15/24	51	4.8	2.6	449	1	Exposed	10/24/22	3	3	3	2	3	13	
590	11/5/24	52	4.6	3.2	304	1	Exposed	11/17/22	3	3	3	3	3	12	
12 3 Exposed 1st Lact Heifers Fresh 8-25 to 8-29															
ID	Fresh	56 Milk	6.1 Fat%	3.5 Pro%	56 SCC(K)	1 Lact	Due	BrthDate	4 U	3 F	3 L	3 B	2 S	12 W	Comment
562	8/29/24	51	7.1	3.0	112	1	Exposed	8/16/22	3	2	2	2	1	11	
572	8/25/25	60	5.6	3.8	15	1	Exposed	12/19/21	4	4	3	3	2	12	★★★★Udder
573	8/25/24	57	5.5	3.6	40	1	Exposed	9/13/22	5	3	3	5	3	14	★★★★★Udder
13 3 Dry 1st Lact Heifers Due 2-3 to 3-14															
ID	Fresh	Milk	Fat%	Pro%	SCC(K)	1 Lact	Due	BrthDate	3 U	3 F	3 L	3 B	3 S	13 W	Comment
523	Dry					1	3/14	1/16/22	3	3	3	3	3	13	
525	Dry					1	2/3	1/19/22	3	2	4	3	3	13	
536	Dry					1	3/4	2/25/22	3	3	3	2	2	13	
14 4 Preg 2nd Lact Cows Due 5-9 to 5-25															
ID	Fresh	67 Milk	4.6 Fat%	3.6 Pro%	36 SCC(K)	2 Lact	Due	BrthDate	4 U	4 F	3 L	4 B	3 S	14 W	Comment
437	5/24/24	67	5.0	3.6	25	2	5/25	4/7/21	4	4	3	4	4	14	★★★★Udder
466	4/5/24	52	4.6	4.0	79	2	5/13	7/2/21	4	5	3	4	3	14	★★★★Udder
480	6/9/24	73	4.2	3.3	9	2	5/9	8/5/21	3	4	3	3	3	14	
484	6/28/24	77	4.5	3.5	31	2	5/14	9/3/21	4	2	2	3	2	13	★★★★Udder
15 4 Preg 2nd Lact Cows Due 7-9 to 8-20															
ID	Fresh	71 Milk	4.6 Fat%	3.5 Pro%	102 SCC(K)	2 Lact	Due	BrthDate	4 U	4 F	3 L	3 B	3 S	14 W	Comment
396	8/7/24	68	5.6	3.6	94	2	7/30	11/8/20	4	3	3	4	4	14	★★★★Udder
416	5/9/24	78	4.8	3.6	116	2	8/20	1/10/21	3	3	2	3	3	14	
500	7/8/24	62	3.8	3.5	138	2	7/9	10/27/21	4	4	4	3	3	13	★★★★Udder
515	10/7/24	75	4.4	3.2	58	2	8/20	12/29/21	4	4	3	3	3	13	★★★★Udder
16 4 Preg 2nd Lact Cows Due 8-25 to 9-17															
ID	Fresh	88 Milk	4.3 Fat%	3.3 Pro%	31 SCC(K)	2 Lact	Due	BrthDate	4 U	3 F	3 L	3 B	3 S	13 W	Comment
455	5/24/24	74	5.0	3.7	20	2	9/17	5/24/21	3	3	2	3	3	14	
476	10/11/24	101	4.0	3.1	22	2	8/25	7/30/21	3	3	3	3	2	12	
490	9/26/24	100	3.5	3.1	23	2	9/3	10/1/21	3	3	3	4	3	14	
510	10/8/24	75	4.8	3.4	60	2	9/8	12/13/21	5	3	3	3	2	13	★★★★★Udder

17 3 Preg Cows LACT COMBO (1-1st, 2-2nd) Due 4-11 to 6-9															
ID	Fresh	54 Milk	4.9 Fat%	3.7 Pro%	146 SCC(K)	2 Lact	Due	BrthDate	3 U	4 F	2 L	4 B	3 S	14 W	Comment
440	1/22/24	35	6.1	4.0	156	1	5/13	4/10/21	3	4	2	3	3	13	WT
446	1/4/24	69	3.7	3.3	76	2	6/9	4/28/21	4	5	2	4	4	14	LLR
471	5/22/24	57	5.0	3.8	207	2	4/11	7/18/21	3	3	3	4	3	14	LRR
18 4 Exposed 2nd Lact Cows Fresh 5-30 to 8-31															
ID	Fresh	90 Milk	4.3 Fat%	3.2 Pro%	103 SCC(K)	2 Lact	Due	BrthDate	4 U	4 F	3 L	4 B	3 S	14 W	Comment
386	5/30/24	94	4.9	3.2	78	2	Exposed	10/23/20	4	3	3	4	3	14	★★★★Udder
431	8/31/24	84	3.6	3.0	247	2	Exposed	3/7/21	3	3	3	3	3	13	
441	7/11/24	72	4.6	3.4	59	2	Exposed	4/16/21	4	4	4	3	3	13	★★★★Udder
485	8/8/24	109	3.9	3.2	28	2	Exposed	9/3/21	5	4	3	5	3	14	★★★★★Udder
19 5 Dry 2nd Lact Cows Due 2-3 to 2-23															
ID	Fresh	Milk	Fat%	Pro%	SCC(K)	2 Lact	Due	BrthDate	3 U	4 F	4 L	3 B	3 S	14 W	Comment
420	Dry					2	2/23	1/22/21	3	5	4	3	3	14	
421	Dry					2	2/23	2/8/21	3	3	4	4	4	14	
438	Dry					2	2/3	4/8/21	3	3	4	2	2	14	
439	Dry					2	2/18	4/10/21	3	4	4	5	3	14	
447	Dry					2	2/16	5/1/21	4	3	4	3	3	14	★★★★Udder
20 5 Dry Cows LACT COMBO (4-2nd, 1-3rd) Due 3-4 to 4-1															
ID	Fresh	Milk	Fat%	Pro%	SCC(K)	2 Lact	Due	BrthDate	4 U	4 F	3 L	4 B	3 S	14 W	Comment
266	Dry					3	4/1	3/20/19	3	4	4	3	3	14	
436	Dry					2	3/4	4/6/21	5	4	4	4	3	14	★★★★★Udder
444	Dry					2	3/11	4/20/21	3	3	3	3	3	13	
457	Dry					2	3/15	5/31/21	4	3	2	4	3	13	★★★★Udder
458	Dry					2	3/19	6/2/21	3	4	3	5	4	15	
21 3 3rd Lact Cows REPRO COMBO (1-Preg, 2-Exposed) Fresh 8-16 to 11-2															
ID	Fresh	97 Milk	4.3 Fat%	2.9 Pro%	20 SCC(K)	3 Lact	Due	BrthDate	3 U	4 F	3 L	4 B	3 S	14 W	Comment
368	8/16/24	98	4.3	2.8	24	3	Exposed	6/4/20	3	4	4	3	2	13	WT
388	11/2/24	79	4.5	3.1	28	3	9/19	10/27/20	3	3	2	4	3	14	WT
392	10/16/24	113	4.1	2.9	7	3	Exposed	11/4/20	3	4	3	5	4	15	WRT
22 3 Preg 3rd Lact Cows Due 5-25 to 8-3															
ID	Fresh	81 Milk	4.3 Fat%	3.3 Pro%	35 SCC(K)	3 Lact	Due	BrthDate	4 U	4 F	3 L	4 B	3 S	14 W	Comment
312	3/7/24	86	3.9	3.3	44	3	5/31	11/15/19	5	4	3	4	4	14	★★★★★Udder
342	6/29/24	72	4.7	3.5	31	3	5/25	3/7/20	3	3	3	4	3	13	
372	9/16/24	86	4.2	3.1	29	3	8/3	7/31/20	4	4	3	4	3	14	★★★★Udder
23 2 Exposed 3rd Lact Cows Fresh 7-29 & 9-13															
ID	Fresh	85 Milk	4.4 Fat%	3.3 Pro%	39 SCC(K)	3 Lact	Due	BrthDate	4 U	3 F	3 L	4 B	4 S	15 W	Comment
277	7/29/24	91	4.4	3.2	49	3	Exposed	5/15/19	3	3	2	4	4	15	
381	9/13/24	78	4.5	3.4	28	3	Exposed	8/29/20	4	2	3	4	3	15	★★★★Udder
24 3 Dry 3rd Lact Cows Due 2-18 to 3-17															
ID	Fresh	Milk	Fat%	Pro%	SCC(K)	3 Lact	Due	BrthDate	3 U	3 F	3 L	4 B	3 S	14 W	Comment
320	Dry					3	2/18	12/25/19	3	3	3	2	2	13	
343	Dry					3	3/17	3/8/20	3	2	2	5	3	14	
344	Dry					3	3/15	3/10/20	3	3	3	4	3	14	

25 6 Fresh Cows LACT COMBO (3-4th, 2-5th, 1-7th) Fresh 1-6 to Sale Day															
ID	Fresh	Milk	Fat%	Pro%	SCC(K)	Lact	Due	BrthDate	U	F	L	B	S	W	Comment
93	1/9/25					7	Exposed	12/11/16	2	4	4	5	4	14	
107	Sells Fresh					5		3/8/17	3	4	3	4	5	15	
193	Sells Fresh					5		5/19/18	3	3	3	5	4	15	
211	Sells Fresh					4		6/21/18	3	4	4	5	5	16	
291	1/6/25					4	Exposed	8/3/19	3	3	3	4	4	14	
356	1/12/25					4	Exposed	4/25/20	3	3	3	3	4	15	
26 6 Fresh Cows LACT COMBO (5-4th, 1-6th) Fresh 1-6 to Sale Day															
ID	Fresh	Milk	Fat%	Pro%	SCC(K)	Lact	Due	BrthDate	U	F	L	B	S	W	Comment
184	12/12/24	104	4.4	2.9	5	6	Exposed	2/25/18	2	3	2	4	3	13	
296	11/4/24	91	4.2	3.1	3	4	Exposed	8/25/19	3	3	3	3	2	13	
307	12/27/24					4	Exposed	11/6/19	3	3	2	4	3	14	
314	11/2/24	129	3.7	2.9	242	4	Exposed	11/27/19	3	4	4	4	3	13	WT
318	11/20/24	103	5.0	2.9	24	4	Exposed	12/19/19	3	3	2	4	3	14	WT
326	12/3/24	116	3.8	2.8	3	4	Exposed	1/2/20	3	4	4	4	3	14	
27 4 Preg Cows LACT COMBO (3-4th, 1-6th) Due 5-11 to 7-30															
ID	Fresh	Milk	Fat%	Pro%	SCC(K)	Lact	Due	BrthDate	U	F	L	B	S	W	Comment
56	5/25/24	61	4.4	3.7	23	6	5/11	8/31/16	2	3	3	4	3	13	Xbred
256	3/18/24	47	5.4	3.7	118	4	7/4	1/15/19	3	3	3	4	4	14	
311	8/21/24	58	5.8	3.4	31	4	7/9	11/14/19	3	3	3	4	4	14	
389	9/23/24	78	5.2	3.5	63	4	7/30	10/29/20	3	4	3	4	3	13	
28 5 Preg Cows LACT COMBO (1-4th, 3-5th, 1-6th) Due 5-25 to 9-7															
ID	Fresh	Milk	Fat%	Pro%	SCC(K)	Lact	Due	BrthDate	U	F	L	B	S	W	Comment
122	6/25/24	53	4.5	3.1	22	6	5/25	4/7/17	2	3	3	3	3	14	DU
142	11/20/23	64	4.6	3.4	143	5	6/15	8/6/17	2	2	3	4	3	14	DU
195	8/19/24	77	4.5	3.3	215	5	8/8	3/14/18	2	3	3	5	3	14	DU
223	9/18/24	87	4.5	3.1	18	5	9/7	8/26/18	2	3	3	4	2	14	DU
305	9/12/24	69	4.7	3.5	278	4	8/31	10/28/19	3	2	2	5	2	14	DU
29 3 Exposed 4th Lact Cows Fresh 8-8 to 12-18															
ID	Fresh	Milk	Fat%	Pro%	SCC(K)	Lact	Due	BrthDate	U	F	L	B	S	W	Comment
244	9/13/24	97	4.6	2.9	53	4	Exposed	12/3/18	3	4	3	4	4	14	
308	8/8/24	90	3.4	3.4	154	4	Exposed	11/7/19	3	4	2	3	3	13	Red & White
346	12/18/24	107	3.9	2.8	45	4	Exposed	3/12/20	4	4	4	4	3	14	★ ★ ★ ★ Udder
30 3 Dry Cows LACT COMBO (1-4th, 2-5th) Due 1-29 to 3-22															
ID	Fresh	Milk	Fat%	Pro%	SCC(K)	Lact	Due	BrthDate	U	F	L	B	S	W	Comment
125	Dry					5	2/8	6/9/17	2	3	4	3	3	14	
209	Dry					5	3/22	6/5/18	2	3	3	3	4	14	DU
218	Dry					4	1/29	7/28/18	3	3	3	3	4	15	
31 3 Preg Cows LACT COMBO (2-2nd, 1-4th) Due 7-30 to 9-15															
ID	Fresh	Milk	Fat%	Pro%	SCC(K)	Lact	Due	BrthDate	U	F	L	B	S	W	Comment
323	10/11/24	59	4.7	3.2	160	4	9/15	12/29/19	2	4	4	3	3	13	Imb-RS
376	10/28/13	59	4.5	3.5	239	2	8/20		4	3	4	5	4	14	Capt Hip 4 ★ Udder
495	8/20/24	68	4.5	3.2	109	2	7/30	10/19/21	3	3	3	4	3	14	Imb-LS
32 3 Exposed Cows LACT COMBO (1-1st, 2-3rd) Fresh 6-30 to 9-30															
ID	Fresh	Milk	Fat%	Pro%	SCC(K)	Lact	Due	BrthDate	U	F	L	B	S	W	Comment
400	10/30/24	87	4.5	3.3	15	3	Exposed	11/24/20	3	2	2	5	3	14	Bad Rear Leg
408	11/17/24	67	3.6	2.9	61	3	Exposed	12/12/20	3	2	2	4	3	14	Wart-RF
566	8/27/24	58	5.6	3.8	186	1	Exposed	8/24/22	3	3	2	2	1	10	Thin & Small

33 3 Exposed Cows | LACT COMBO (1-1st, 2-2nd) | Fresh 6-30 to 9-30

ID	Fresh	LACT COMBO					Due	BrthDate	Udder						Comment
		Milk	Fat%	Pro%	SCC(K)	Lact			U	F	L	B	S	W	
468	6/30/24	63	5.0	3.8	29	2	Exposed	7/15/21	4	3	4	3	3	13	★★★★Udder
506	9/30/24	58	4.0	3.4	305	2	Exposed	11/25/21	3	4	2	4	4	14	LRF
553	7/13/24	60	5.5	3.6	70	1	Exposed	6/16/22	3	3	2	4	3	13	LRR

34 3 Preg 3/4 3rd Lact Cows | Due 5-13 to 7-25

ID	Fresh	LACT COMBO					Due	BrthDate	Udder						Comment
		Milk	Fat%	Pro%	SCC(K)	Lact			U	F	L	B	S	W	
316	2/2/24	48	5.2	3.9	93	3	5/13	12/14/19	3	3	3	3	3	15	3/4-LF
352	7/21/24	57	5.5	3.6	106	3	6/15	4/8/20	2	4	4	4	4	14	3/4-RF
391	9/15/24	66	5.1	3.2	14	3	7/25	11/1/20	2	4	4	4	3	14	3/4-LR

35 3 3/4 Exposed Cows | LACT COMBO (2nd, 3rd, 4th) | Fresh 9-23 to 11-14

ID	Fresh	LACT COMBO					Due	BrthDate	Udder						Comment
		Milk	Fat%	Pro%	SCC(K)	Lact			U	F	L	B	S	W	
246	9/23/24	78	5.3	3.1	168	4	Exposed	12/12/18	2	2	2	4	2	13	3/4-RR
369	11/14/24	87	3.9	3.0	21	3	Exposed	6/25/20	3	3	3	4	3	14	3/4-LR
486	8/17/24	91	3.8	3.1	20	2	Exposed	9/9/21	3	2	2	4	3	13	3/4-RR

36 2 Exposed Cows (1st & 2nd) | Fresh 3-4 to 4-1

ID	Fresh	LACT COMBO					Due	BrthDate	Udder						Comment
		Milk	Fat%	Pro%	SCC(K)	Lact			U	F	L	B	S	W	
395	3/4/24	71	4.8	3.7	157	2	Exposed	11/7/20	3	2	2	5	2	13	Bad Legs
545	4/1/24	80	4.4	3.4	14	1	Exposed	5/2/22	4	4	3	3	3	14	★★★★Udder

40 8 Preg Heifers | Preg 8+ Months Est Weight 1350#-1450#, Med Flesh

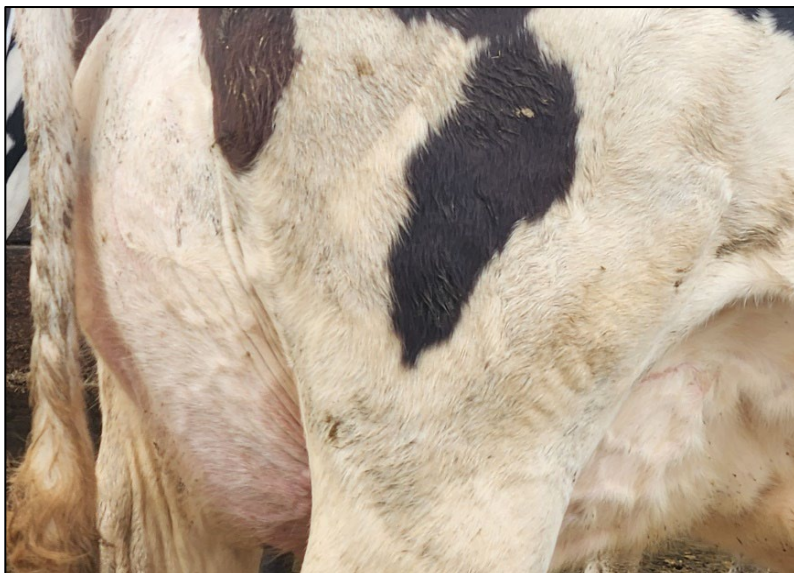
ID	Repro	Birthdate
608	Preg 8+ Months	1/9/23
610	Preg 8+ Months	2/2/23
612	Preg 8+ Months	2/9/23
614	Preg 8+ Months	2/10/23
615	Preg 8+ Months	2/13/23
618	Preg 8+ Months	3/9/23
619	Preg 8+ Months	3/10/23
620	Preg 8+ Months	3/15/23

41 11 Preg Heifers | Preg 7-7 1/2 Months Est Weight 1300#-1400#, Med Flesh

ID	Repro	Birthdate
621	7-7 1/2 Months	3/16/23
622	7-7 1/2 Months	3/20/23
623	7-7 1/2 Months	3/22/23
624	7-7 1/2 Months	3/24/23
625	7-7 1/2 Months	3/31/23
626	7-7 1/2 Months	4/7/23
627	7-7 1/2 Months	4/8/23
629	7-7 1/2 Months	4/10/23
631	7-7 1/2 Months	4/21/23
635	7-7 1/2 Months	5/1/23
636	7-7 1/2 Months	5/3/23

42 8 Preg Heifers | Preg 5-5 1/2 Months Est Weight 1250#-1350#, Med Flesh

ID	Repro	Birthdate
638	Preg 5-5 1/2 Months	5/19/23
639	Preg 5-5 1/2 Months	5/20/23
640	Preg 5-5 1/2 Months	5/21/23
641	Preg 5-5 1/2 Months	6/8/23
642	Preg 5-5 1/2 Months	6/9/23
643	Preg 5-5 1/2 Months	5/12/23
645	Preg 5-5 1/2 Months	6/19/23
646	Preg 5-5 1/2 Months	6/23/23



43**16 Preg Heifers | Preg 2-2 1/2 Months**

Est Weight 1000#-1100#, Med Flesh

ID	Repro	Birthdate
649	Preg 2-2 1/2 Months	7/10/23
650	Preg 2-2 1/2 Months	7/20/23
651	Preg 2-2 1/2 Months	8/2/23
652	Preg 2-2 1/2 Months	8/5/23
653	Preg 2-2 1/2 Months	8/14/23
654	Preg 2-2 1/2 Months	8/14/23
655	Preg 2-2 1/2 Months	8/20/23
656	Preg 2-2 1/2 Months	8/26/23
658	Preg 2-2 1/2 Months	8/26/23
659	Preg 2-2 1/2 Months	8/31/23
660	Preg 2-2 1/2 Months	8/31/23
661	Preg 2-2 1/2 Months	9/3/23
662	Preg 2-2 1/2 Months	9/5/23
663	Preg 2-2 1/2 Months	9/9/23
664	Preg 2-2 1/2 Months	9/10/23
665	Preg 2-2 1/2 Months	9/10/23

Selling Single

Lot	Repro	Birthdate
44-609	Preg 8+ Months	1/19/23
44-628	Preg 7-7 1/2 Months	4/8/23
44-634	Preg 7-7 1/2 Months	4/26/23
44-637	Preg 4 1/2 Months	5/11/23
44-657	Preg 2 1/2 Months	8/26/23

50**14 Open Heifers**

Est Weight 900#-950#, Med Flesh

ID	Repro	Birthdate
666	Open	9/14/23
667	Open	9/17/23
668	Open	9/22/23
669	Open	9/22/23
670	Open	9/22/23
672	Open	9/26/23
673	Open	10/7/23
674	Open	10/9/23
677	Open	10/16/23
680	Open	10/19/23
681	Open	10/22/23
682	Open	10/25/23
683	Open	10/29/23
690	Open	10/15/23

51**11 Open Heifers**

Est Weight 800#-900#, Med Flesh

ID	Repro	Birthdate
685	Open	11/3/23
686	Open	11/5/23
691	Open	11/20/23
693	Open	11/23/23
694	Open	11/23/23
695	Open	11/24/23
696	Open	11/30/23
697	Open	12/5/23
698	Open	12/6/23
699	Open	12/12/23
700	Open	12/15/23



52**16 Open Heifers**

Est Weight 750#-850#, Med Flesh

ID	Repro	Birthdate
701	Open	12/20/23
704	Open	12/25/23
705	Open	12/25/23
706	Open	12/27/23
707	Open	12/27/23
709	Open	12/29/23
711	Open	1/3/24
712	Open	1/3/24
713	Open	1/4/23
714	Open	1/11/24
717	Open	1/15/24
718	Open	1/15/24
719	Open	1/18/24
720	Open	1/21/24
721	Open	1/22/24
723	Open	1/27/24

**53****2 Red & White Open Heifers**

ID	Repro	Est Weight	Birthdate
702	Open	750	12/21/23
738	Open	600	3/22/24

54**11 Open Heifers**

Est Weight 600#-700#, Med Flesh

ID	Repro	Birthdate
725	Open	2/8/24
727	Open	2/12/24
729	Open	3/1/24
730	Open	3/4/24
731	Open	3/7/24
732	Open	3/7/24
733	Open	3/8/24
734	Open	3/14/24
735	Open	3/15/24
736	Open	3/18/24
740	Open	3/25/24

**55****5 Open Heifers**

Est Weight 500#-550#, Med Flesh

ID	Repro	Birthdate
742	Open	4/23/24
745	Open	5/10/24
746	Open	5/12/24
747	Open	5/21/24
748	Open	5/22/24

**56****5 Open Heifers**

Est Weight 500#-550#, Med Flesh

ID	Repro	Birthdate
749	Open	5/24/24
750	Open	5/24/24
751	Open	4/30/24
752	Open	6/30/24
754	Open	7/21/24

57**8 Open Heifers**

Est Weight 400#-450#, Med Flesh

ID	Repro	Birthdate
757	Open	8/13/24
758	Open	8/13/24
759	Open	8/19/24
756	Open	8/7/24
753	Open	7/11/24
763	Open	8/25/24
764	Open	7/25/24
761	Open	8/23/24

58**10 Open Heifers**

Est Weight 300#-350#, Med Flesh

ID	Repro	Birthdate
762	Open	8/23/24
768	Open	9/12/24
766	Open	8/31/24
773	Open	10/8/24
769	Open	9/13/24
771	Open	9/21/24
772	Open	10/7/24
774	Open	10/11/24
775	Open	10/15/25
765	Open	8/25/24

59**7 Open Heifers**

Est Weight 250#-300#, Med Flesh

ID	Repro	Birthdate
780	Open	11/2/24
779	Open	11/2/24
781	Open	11/4/24
777	Open	10/16/24
767	Open	9/12/24
776	Open	10/16/24
778	Open	10/26/24

60**5 Open Heifers**

Est Weight 175#-200#, Med Flesh

ID	Repro	Birthdate
787	Heifer Calf	12/18/24
785	Heifer Calf	12/12/24
784	Heifer Calf	12/12/24
782	Heifer Calf	11/14/24
783	Heifer Calf	12/5/24

61**5 Heifer Calves**

ID	Repro	Birthdate
790	Heifer Calf	1/4/25
791	Heifer Calf	1/6/25
792	Heifer Calf	1/8/25
793	Heifer Calf	1/9/25
794	Heifer Calf	1/12/25

62**3 Red & White Heifer Calves**

ID	Repro	Birthdate
788	Heifer Calf	12/18/24
789	Heifer Calf	12/22/24
786	Heifer Calf	12/17/24

63**2 Red & White Heifer Open Heifers**

Est Weight 250#-350#, Med Flesh

ID	Repro	Birthdate
760	Open	8/19/24
755	Open	7/24/24

Herd Bulls

Lot	Sire Stack
70-2	Hancock x Jacoby
70-6	Sammer x Defiant
70-8	Eye Candy x Advent





- 100 New Holland L328 Skid-Loader s/n NMM400744 5427 Hours- New Motor at 4600 Hours
- 101 New Holland 316 Disc Bine s/n HBjDB316TLN270445
- 102 New Holland FP240 s/n YFN122933 w/ Kernal Processor, Hay Head, 3 Row Cown Head
- 103 Claus 751 Baler s/n 75104458 w/ wrapper, 4207 Bales
- 104 Ag Bag Miller 6170 s/n 4205647, new tine caps, new conveyor chain
- 105 RCI 186M Merger, s/n 830
- 106 New Holland 166 Merger s/n 9524, Extension & 2 new belts
- 107 Meyer SXI 865 Spreader, 2 years Old s/n SX123865207
- 108 Houle 5250 Tank s/n 1801-065601-484D4350 Tires 28L-26 , 1000 RPM
- 109 Houle Pump s/n CAA-1104881
- 110 Penta 4120 Mixer, s/n 100719
- 111 Meyer 4516 Forage Wagon, Tandem Gear s/n 14T5301
- 112 Meyer 4516 Self Forage Wagon, Tandem Gear s/n 00T5420
- 113 Gehl 970 Forage Wagon s/n 142636
- 114 Gehl 970 Forage Wagon
- 115 Gehl 970 Forage Wagon s/n 41991, Missing Meat Guard
- 116 Gehl 970 Forage Wagon s/n 38643
- 117 John Deere 716A Self Unloading Wagon s/n 012356w
- 118 John Deere 716A Self Unloading Wagon ITM 12339-No Roof
- 119 Gehl Forage Wagon s/n 15182-No Roof
- 120 Roto Grind & Auger s/n 6610 Au610-104-0906
- 121 Mueller 1000 Gal Tank, Compressor, Autowash & Control Boxes, s/n 15796A | #1
- 122 Mueller 1000 Gal Tank, Compressor, Autowash & Control Boxes | #2
- 123 11 Stall Right Load Parabone Parlor Package, 11 Units, Westphalia Metatron 12 Meters,
Westphalia Recivor Group, All Stainless Pipe & Wash Line, Sureg Detachers,
Plate Cooler, Wash Vats, & All Control Boxes
- 124 Aplha-Laval Vacumn Pump
- 125 3 Agri Plastic Super Hutches
- 126 1 Calf-Tel Super Hutch
- 127 2 Calf-Tel Hutches

Feel Free To Call
 Bryant 574-727-4961
 With Equipment
 & Feed Questions



All Feed Sells By the Bag & Buyer Is Responsible For Loading

- 201 1st Cutting Haylage | 10' x 250' Bag
- 202 1st Cutting Haylage | 10' x 250' Bag
- 203 1st Cutting Haylage | 10' x 250' Bag
- 204 1st Cutting Haylage | 10' x 250' Bag
- 205 3rd Cutting Haylage | 10' x 250' Bag
- 206 3rd Cutting Haylage | 10' x 250' Bag
- 207 Chopped Straw | 10" x 100' - 2 Partial Bags
- 208 4th Cutting Haylage | 10' x 250' Bag
- 209 5th Cutting Haylage | 10' x 250' Bag
- 210 Wet Corn Gluten | 9' x 250' Bag
- 211 Wet Corn Gluten | 9' x 250' Bag
- 212 Corn Silage | 10' x 250' Bag
- 213 Corn Silage | 10' x 250' Bag
- 214 3rd Cutting Haylage | 10' x 250' Bag
- 215 Corn Silage | 10' x 250' Bag
- 216 Corn Silage (2023) | 10' x 250' Bag
- 217 Corn Silage | 10' x 250' Bag
- 218 Triticale | 10' x 200' Bag | Currently Feeding Out Of

*You will Like What You SEE!
Thank You For Your Interest In This Sale*