



# Dalring

## Dairy Farm

**Complete ONLINE Dispersal**

**11-12-25 | [www.kreegerdairy.com](http://www.kreegerdairy.com) | Addison, MI**

# Poling Dairy Farm

Complete ONLINE Dispersal

Wednesday 11-12-25 12-1 PM ET

Bid Online or On The Phone

[www.kreegerdairy.com](http://www.kreegerdairy.com)

Load Out 11-13-25 @ 3111 N Meridian Addison, MI

#### Sale Team

Clay Papoi	(Sale Coordinator)	517-526-1917
Chad Kreeger		517-294-3484
Paul Warner		517-231-8427
Brian Landis		574-536-5026
Dave Whelen		517-403-7219
Shaun Hyde		989-287-2660
Gabe Papoi		989-444-8275
David Bennett		989-286-7244
Joe Sparrow		270-670-4178
Eddie Fredricksson		386-330-4152

*Please contact any member of the sale team to place bids on the phone or with questions on the cattle or the sale process.*

Herringbone, Sand Freestalls, Headlocks , AI Sired & Bred  
Complete Vaccinations & Herd Health w/ CVS | DHIA 34-30-0933  
Cows have been Bird Flue Tested To Travel

Terms: Payment by Good Check or Wire Transfer before loading  
No Buyers Premium | Trucking Available

**Kreeger**  
and Associates, LLC

Box 42 Cass City, MI 48726  
chadkreeger@hotmail.com  
517-294-3484

**Poling**  
Dairy Farm

3111 N Meridian Addison, MI  
Doug Poling 517-812-1300

#### Terms & Conditions

**Bidding & Sale Process:** The Sale will be conducted in an internet auction format. You can bid online or any member of the sale team can bid for you or have you on the phone the phone during the sale. The Sale begins closing at 12:00 PM, Each Minute one lot closes in lot order. The system does have a bid extension and the lot will close when one minute passes without any increased bids on that lot. The sale will continue to close in order, even if there is overtime bidding on one or multiple lots . When the lot closes the high bid will be the buyer

#### All Lots sell with 100% Buyer satisfaction

If the buyer does not like the cattle after viewing them prior to loading at the sellers farm, they do not have to take ownership of them, however once they are loaded and leave the sellers farm they are sold on an "As Is" basis with no warranty, expressed or implied and are the property of the buyer. For lots listed as "Sort At Loading"– we will sort any off that need to be, therefore the head count may vary. Lots will sell by the head multiplied by the number of head in each specific lot for the total lot price. If other selling terms are used on a lot it will be listed on that lot description, Example: elling by the pound multiplied by the total weight of the lot weighed on the truck.

#### Payment Terms

#### All cattle must be paid for in full before they are loaded.

Payment must be made in good check or wire transfer to Kreeger and Associates, LLC. The buyer will be invoiced for the full amount. Kreeger and Associates will hold the funds until the cattle are loaded. If any difference after loading the balance will be refunded. All bids are in US funds.

**Trucking Details:** Kreeger and Associates, LLC will assist with load outs and handle arrangements for the trucks.

**Health Warranty:** Proper health certificates will be provided when required any additional testing cost will be the responsibility of the buyer. The results of any future health test is not guaranteed. No iswarranted to be free of Johnes or any other infectious disease. For animals that travel outside of the state of origin the buyer will be responsible for the legal importation of cattle into that state, please check prior to the sale.

**Errors:** The material printed in this catalog has been carefully edited. If any errors or omissions are discovered, they will be posted a [www.kreegerdairy.com](http://www.kreegerdairy.com) and changed in the auction system. Such announcements take precedence over printed material. This information is provided by the owners and DHIA Records and is believed to be correct, however, it is not guaranteed. This sale will be controlled by an auction program. Kreeger and Associates, LLC is not responsible for malfunction or system errors which cause a bid or bidder to fail to be recognized or registered. Some of the animals shown in a lot video may have been moved to a different lot allowing for truck load capacity and reproductive status.

**General:** It is the intention of the owners and the sale management to represent and present these animals in their present condition, however No adjustments will be made after the animal's) leave the sellers farm. Females announced as pregnant were found to be pregnant by a licensed veterinarian. No guarantee is made or implied that the pregnancy will go full term. Cattle that are sold with a natural service date are as accurate as possible, although they are not guaranteed to be exact.

**Disclaimer:** Any person bidding on items in the auction agrees to these terms and conditions and understands that, by bidding, they are entering into a legal binding contract between themselves and the seller(s) and that they will be held financially responsible for their actions. This includes those people representing parties not present at the sale. Neither the owners, auctioneers, sale manager nor other affiliated personnel may be held responsible for any accidents that may occur. Kreeger and Associates, LLC acts only as an agent between buyer and seller and may not be held responsible for any livestock or merchandise. It is to be clearly understood that Kreeger and Associates, LLC and its representatives act only as a medium between buyer and seller, and may not be held liable, financially or otherwise, for any failure in any obligations set forth in this sale.

**Vaccination Protocol**

**Heifers**

Birth: Inforce 3 & Tri Shield

8 Weeks: Bovishield Gold, Vison 7, Barvac & Dehorned

Move From Hutches: Presponse

11 Months: Bovishield Gold

**Cows**

30 DIM: Bovishield GOLD FP5L5HB | 200 DIM: Triangle 10

Dry Off: S[ectramast DC & Orbaseal (Heifers Get 2 Shots of Equa Vac)

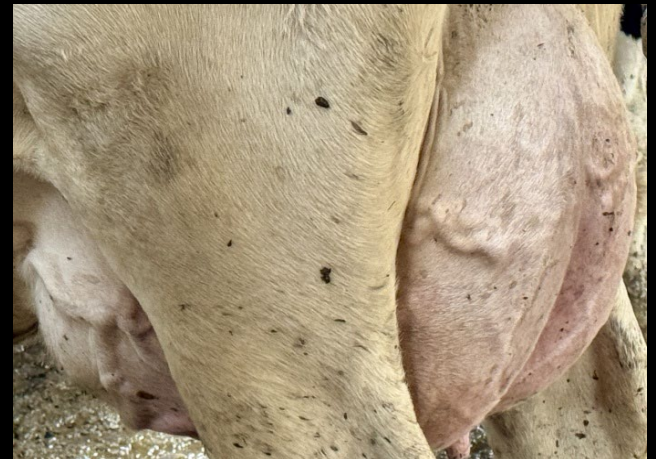
50 PDF: SRP, Scourguard 4KC, Jvac | 1 week After: Trangle 10 & Vison 7

28 DPF: SRP, Scourguard 4KC, Jvac

175

4 & 5

Udders



**Internet Description Reference Table**

Internet Description Score (IDS)

This is just one persons opinion to help describe each cow. The higher the number the better she is, with 3 being an average good looking & working functional cow.  
 (U) Udder 1- 5 | (F) Feet 1- 5 | (L) Legs 1- 5 | (S) Stature 1- 5  
 (B) Body Condition 1 Thin - 5 Fat | (W) Weight Estimate  
 5 STAR- This is based on there (IDS) and production and reproduction information.  
 A Five Star best combines it all! 4 STAR- Almost a 5, but not quite!



Operational Designations

Gold Star- Well Managed Highly Productive Operation, Checks All The Boxes  
 Reputation- Goldstar Grower, But Doesn't Breed AI  
 Genetic Focused- Genomic Tested or Prioritizes Genetics In The Day To Day Operations  
 Legendary- Herds that we have worked with for generations



Individual

Group

1																	17 Fresh 1st Lact Heifers   Fresh 9-1 to 10-27																
ID	Fresh	1						Repro	Date	ServSireCode	SireCode	MGSCode	BrthDate	5	4	4	4	4	16	Comment													
		Milk	ECM	Fat%	Pro%	SCC	Lact							U	F	L	S	B	#														
2849	9/30/25						1				7HO12823	7HO13140	9/7/20	4	3	3	4	3	12	4 ★ Udder													
2853	9/25/25						1				7HO13140	7HO11283	4/6/18	5	4	4	4	3	12	5 ★ Udder													
2854	9/30/25						1				7HO14060	7HO12436	1/14/21	5	3	3	4	3	12														
2855	9/28/25						1				7HO12849	7HO12518	8/6/21	4	3	3	4	3	13	4 ★ Udder													
2871	9/24/25						1				7HO12849	7HO11351	10/16/21	3	3	3	4	3	13														
2872	10/19/25						1				250HO15662	7HO12533	8/1/23	5	3	3	3	3	12	5 ★ Udder													
2878	9/19/25						1				14HO12604	7HO12518	5/6/22	3	3	4	4	3	13														
2880	9/7/25						1				7HO15365	7HO12568	8/19/23	4	3	3	4	3	11	4 ★ Udder													
2889	10/27/25						1				7HO15440	14HO14464	8/29/23	4	3	4	5	3	13	4 ★ Udder Red & White													
2901	9/23/25						1				7HO12897	7HO12111	10/4/23	4	3	2	3	3	12	4 ★ Udder													
2906	10/5/25						1				7HO12897	7HO11617	5/30/23	3	3	3	3	3	13	5 ★ Udder													
2908	9/19/25						1				7HO15023	7HO12587	10/1/2023	4	3	3	3	3	12	4 ★ Udder													
2910	10/24/25						1				250HO15235	7HO11546	10/4/23	4	3	3	3	4	13	4 ★ Udder													
2914	9/1/25						1				7HO13766	7HO9703	8/13/22	5	4	4	3	3	12	5 ★ Udder													
2922	9/27/25						1				7HO12945	7HO11283	7/12/22	5	3	3	3	3	12	5 ★ Udder													
2934	10/23/25						1				14HO15557	7HO13159	12/2/23	3	3	3	4	3	13														
2954	10/20/25						1				7HO15094	7HO11725	12/30/23	4	3	3	4	3	12	4 ★ Udder													

2																	Close Up Springers   5 Preg Heifers   Due 11-17 to 11-26   Some May Be Fresh   Medium Flesh, Est Weight 1300#																			
ID	215						27329						1094						887						1980						13					
	pNM\$	Dam	305me	Fat	Pro	CFP	Repro	Date	ServSireCode	SireCode	MGSCode	BrthDate	U	F	L	S	B	#	Comment																	
2907	277	2517	27134	1096	878	1975	Due	11/26	14HO16222	250HO15662	7HO12849	9/30/23						14																		
2912	246	2542	26689	1160	942	2102	Due	11/19	14HO16222	250HO15662	7HO12784	10/5/23						13																		
2917	102	2604	32923	1285	1078	2363	Due	11/26	14HO15831	14HO7828	14HO13858	10/28/23						13																		
2926	168	2607	23500	1048	762	1810	Due	11/17	14HO16222	7HO15094	7HO13716	11/16/23						12																		
2974	280	2446	26398	879	773	1652	Due	11/24	14HO16222	14HO15301	7HO12533	1/31/24						11																		

3																	7 Fresh/Serviced 1st Lact Heifers   Fresh 8-1 to 8-25																
ID	Fresh	82	88	4.1	3.3	62	1	Repro	Date	ServSireCode	SireCode	MGSCode	BrthDate	4	3	3	4	3	12	Comment													
		Milk	ECM	Fat%	Pro%	SCC	Lact							U	F	L	S	B	#														
2836	8/25/25	79	112	3.8	3.1	38	1	Bred	10/15	250HO17261	7HO12897	7HO13140	7/29/23	4	3	3	3	3	13	4 ★ Udder													
2844	8/8/25	100	86	4.6	3.7	29	1				14HO14464	551HO5808	8/25/22	4	3	3	4	3	12	4 ★ Udder													
2858	8/22/25	75	112	3.4	3.6	44	1	Bred	10/15	7HO15967	7HO12449	7HO11546	7/17/21	4	3	2	5	3	12	4 ★ Udder													
2870	8/1/25	80	37	4	3.4	93	1	Bred	10/22	250HO17261	14HO14906	7HO12255	10/25/22	3	3	3	4	4	12														
2875	8/2/25	72	85	4	2.9	18	1	Bred	10/1	7HO17132	250HO15662	7HO12255	7/26/23	4	3	3	3	3	13	4 ★ Udder													
2883	8/11/25	86	97	4.5	2.9	152	1				14HO15491	7HO11283	8/24/23	5	3	3	2	3	12	5 ★ Udder													

**3-1 9 Fresh/Serviced 1st Lact Heifers | Fresh 6-7 to 8-25**

ID	Fresh	79	83	4.3	3.1	60	1	Repro	Date	ServSireCode	SireCode	MGSCode	BrthDate	4	3	3	3	3	13	Comment
		Milk	ECM	Fat%	Pro%	SCC	Lact							U	F	L	S	B	#	
2734	7/24/25	94	108	4.9	3.6	1	1	Bred	10/1	7HO17132	14HO12604	7HO12198	8/29/22	4	3	3	3	2	13	4 ★ Udder
2834	7/9/25	74	82	4.2	3.2	33	1	Bred	9/17	7HO17132	7HO15275	7HO11314	5/13/23	5	3	3	3	3	13	No Tag-Black
2838	7/18/25	64	99	4.2	3.5	246	1	Bred	10/22	250HO17261	7HO13716	7HO11283	9/8/22	3	3	3	3	3	13	
2850	7/4/25	80	72	4.5	2.7	62	1				7HO15094	7HO14060	6/27/23	4	3	3	4	3	13	
2851	6/7/25	77	74	4.7	2.8	23	1				7HO15365	7HO12014	8/1/23	5	3	3	3	3	12	
2868	7/24/25	80	79	4.5	2.6	31	1				7HO14060	7HO12255	8/13/21	4	3	3	5	4	13	4 ★ Udder
2898	7/28/25	74	110	4.6	3.3	93	1	Bred	10/22	7HO14694	7HO11617	7HO13140	3/11/20	4	3	3	3	2	12	4 ★ Udder
2902	7/18/25	94	75	3.9	2.9	29	1				7HO13159	7HO12848	7/16/20	5	3	4	3	3	13	4 ★ Udder
2918	7/28/25	80	47	2.9	3.3	18	1				7HO13140	7HO11283	12/3/17	3	4	4	4	4	13	

**4 8 Fresh 2nd Lact Cows | Fresh 9-5 to 10-19**

ID	Fresh	66	3.1	2.2	13	1	Repro	Date	ServSireCode	SireCode	MGSCode	BrthDate	3	2	2	3	2	10	Comment	
		Milk	ECM	Fat%	Pro%	SCC							Lact	U	F	L	S	B		#
2683	9/17/25	93	105	4.5	2.9	62	2				14HO7868	7HO12255	6/25/22	4	3	4	3	2	14	No Tag-Black
2691	9/5/25	93		3.5	3.5	25	2				7HO12533	7HO12255	10/15/20	3	3	3	4	4	16	
2722	9/17/25	93		4.7	2.9	19	2				14HO14464	7HO12843	8/28/23	4	3	3	4	3	14	4 ★ Udder Red & White
2725	9/10/25	93		4.0	3.1	27	2				7HO13716	7HO8946	12/11/21	4	3	3	3	2	12	4 ★ Udder
2737	10/14/25						2				7HO13741	7HO12255	10/1/22	5	3	3	3	2	13	5 ★ Udder
2749	10/19/25						2			14HO16222	14HO14906	7HO11708	10/27/22	5	3	3	4	3	14	5 ★ Udder
2759	9/26/25	93		4.9	3	14	2				7HO15365	7BS852	9/7/23	5	3	3	4	3	13	5 ★ Udder
2762	10/17/25						2				250HO14937	7HO11741	12/1/22	4	3	3	4	3	13	4 ★ Udder

**5 7 Fresh/Serviced 2nd Lact Cows | Fresh 7-27 to 8-23**

ID	Fresh	97	77	3.5	2.5	15	2	Repro	Date	ServSireCode	SireCode	MGSCode	BrthDate	4	3	3	3	3	14	Comment
		Milk	ECM	Fat%	Pro%	SCC	Lact							U	F	L	S	B	#	
2665	8/23/25	79	112	4.7	3.2	13	2	Bred	10/13	7HO17137	7HO13826	7HO12920	11/1/23	4	3	3	3	3	12	4 ★ Udder
2674	7/20/25	101	77	4.2	2.7	33	2				7HO14859	7HO12533	9/13/23	4	3	3	3	3	14	4 ★ Udder
2676	8/20/25	115	55	3.3	2.8	14	2				14HO14947	72944077	11/10/23	3	3	3	5	3	14	
2708	8/13/25						2	Bred	10/22	250HO17261	7HO13741	7HO13159	8/8/22	5	3	4	3	3	14	5 ★ Udder
2711	8/20/25	93	78	4	3.1	13	2				7HO11617	7HO12169	4/22/20	3	3	2	3	3	14	
2720	8/11/25	108	109	3.6	3	13	2				14HO12604	7HO12255	9/1/22	4	3	3	4	3	14	4 ★ Udder
2864	7/27/25	87	108	4.7	2.9	19	2				7HO12344	551HO5818	9/3/22	4	3	3	3	3	13	4 ★ Udder

6 11 Preg 1st Lact Heifers   Due 6-1 to 7-15																				
ID	Fresh	78	87	4.0	3.4	28	1	Repro	Date	ServSireCode	SireCode	MGSCode	BrthDate	4	3	3	3	3	13	Comment
		Milk	ECM	Fat%	Pro%	SCC	Lact							U	F	L	S	B	#	
2794	1/21/25	87	100	4.3	3.6	14	1	Due	6/24	7HO17132	14HO14810	7HO12111	1/14/23	5	3	3	4	3	13	5 ★ Udder
2805	12/4/24	74	89	4.5	4	38	1	Due	6/16	250HO17212	7HO14132	7HO14060	2/6/23	4	3	4	3	3	13	4 ★ Udder
2817	5/10/25	74	80	3.9	3.4	13	1	Due	6/10	7HO17132	7HO15275	7HO11893	3/21/23	5	3	3	3	3	13	5 ★ Udder
2822	5/28/25	74	81	3.9	3.6	13	1	Due	6/1	250HO17212	7HO15607	7HO11546	4/6/23	3	3	3	3	3	14	
2827	5/7/25	77	87	4.2	3.4	22	1	Due	6/3	7HO14694	14HO14906	7HO12222	5/1/23	3	3	3	4	3	13	
2857	7/11/25	80	95	4.1	3.1	13	1	Due	7/15	7HO17132	7HO12897	7HO11725	7/17/23	4	3	3	3	3	12	4 ★ Udder
2859	7/5/25	87	88	3.5	3.2	115	1	Due	6/24	7HO17132	250HO15662	7HO12823	7/10/23	4	3	3	4	3	13	4 ★ Udder
2865	5/6/25	84	88	3.8	3.2	13	1	Due	6/3	7HO14694	14HO15491	7HO12823	7/18/23	5	3	3	3	3	13	5 ★ Udder
2869	7/6/25	74	73	3.5	2.9	20	1	Due	6/24	7HO17137	7HO12344	551HO5818	7/28/23	4	3	3	3	3	13	4 ★ Udder
2891	7/5/25	74	84	4.3	3.5	20	1	Due	6/24	7HO17132	14HO15491	7HO12823	9/1/23	4	3	3	3	3	13	4 ★ Udder
2896	6/27/25	80	87	3.9	3.3	23	1	Due	6/6	7HO14694	7HO12897	7HO12740	9/7/23	3	3	3	3	3	13	

7 8 Preg 1st Lact Heifers   Due 3-18 to 5-27																				
ID	Fresh	76	79	3.7	3.3	28	1	Repro	Date	ServSireCode	SireCode	MGSCode	BrthDate	4	3	3	3	3	13	Comment
		Milk	ECM	Fat%	Pro%	SCC	Lact							U	F	L	S	B	#	
2779	2/4/25	74	78	3.7	3.4	13	1	Due	5/20	7HO15967	14HO15054	7HO12708	12/19/22	3	3	3	3	3	14	
2781	3/26/25	100	99	3.4	3	13	1	Due	4/22	7HO14694	14HO15054	7HO12708	12/25/22	3	3	3	3	3	13	
2786	3/28/25	80	85	3.8	3.3	13	1	Due	4/17	250HO16839	250HO14937	7HO11725	1/3/23	4	3	3	3	5	13	4 ★ Udder
2791	3/15/25	74	78	3.8	3.2	23	1	Due	4/15	7HO14694	7HO14592	7HO14060	1/11/23	5	3	3	3	3	14	5 ★ Udder
2814	2/8/25	60	73	4.6	3.8	87	1	Due	5/6	7HO17155	7HO12344	551HO5808	3/9/23	3	4	3	3	3	14	
2825	4/2/25	80	91	4.2	3.5	13	1	Due	3/18	7HO15967	14HO14906	7HO13492	4/15/23	3	3	3	3	3	13	
2840	4/22/25	67	60	2.7	3.1	50	1	Due	5/27	7HO17132	7HO15094	7HO12222	6/4/23	4	3	3	4	2	12	4 ★ Udder
2895	6/5/25	74	70	3.1	3	13	1	Due	5/20	7HO15967	7HO14705	7HO12849	9/5/23	4	3	3	2	3	11	4 ★ Udder

8 7 Preg 1st Lact Heifers   Due 1-21 to 4-15																				
ID	Fresh	59	69	4.3	3.7	24	1	Repro	Date	ServSireCode	SireCode	MGSCode	BrthDate	4	3	3	3	3	14	Comment
		Milk	ECM	Fat%	Pro%	SCC	Lact							U	F	L	S	B	#	
2706	6/11/24	57	71	4.7	4	71	1	Due	3/5	7HO15967	14HO7868	7HO12048	8/7/22	4	3	3	4	3	14	4 ★ Udder
2775	1/20/25	66	79	4.5	3.8	13	1	Due	2/18	7HO15967	14HO14415	7HO13492	12/15/22	5	3	4	3	3	13	5 ★ Udder
2778	3/4/25	53	49	3	2.9	20	1	Due	4/1	7HO15967	14HO15054	72944077	12/17/22	4	3	3	4	2	13	4 ★ Udder
2799	2/18/25	67	74	4.2	3.2	13	1	Due	2/4	7HO16396	14HO14629	7HO12255	1/24/23	4	3	3	3	3	14	4 ★ Udder Stub Horn
2816	1/25/25	59	78	5.1	4.3	18	1	Due	3/19	7HO15967	14HO14810	7HO11725	3/18/23	4	3	3	3	3	13	4 ★ Udder
2818	3/30/25	53	64	4.5	3.8	19	1	Due	3/18	7HO15967	7HO15621		3/26/23	4	3	3	3	4	14	4 ★ Udder
2821	4/27/25	60	70	4.4	3.6	13	1	Due	4/15	7HO14694	14HO14906	7HO12708	4/6/23	4	3	3	4	3	14	4 ★ Udder

**9 Close Up Pen | 6 1st & 2nd Lact Dry Cows | Due 11-8 to 11-19 | Some Will Be Fresh**

ID	Fresh						28	1.7	Repro	Date	ServSireCode	SireCode	MGSCode	BrthDate	4	3	3	3	4	16	Comment
		Milk	ECM	Fat%	Pro%	SCC	Lact	U							F	L	S	B	#		
2513	Dry					20	2	Due	11/10	250HO15955	14HO14464	7HO12518	7/26/21	4	3	3	4	5	20	4 ★ Udder	
2534	Dry					24	2	Due	11/8	7HO16179	7HO13826	7HO11893	8/17/21	3	3	3	3	4	15	WebTeat-LF	
2596	Dry					53	2	Due	11/14	7HO16179	7HO12784	7HO12165	11/30/21	4	3	2	3	3	14	4 ★ Udder	
2597	Dry					20	2	Due	11/19	14HO15926	7HO13598	7HO11617	12/1/21	4	3	2	4	3	16	4 ★ Udder	
2752	Dry					14	1	Due	11/12	14HO15831	14HO14587	7HO11725	11/13/22	5	3	3	3	3	14	5 ★ Udder	
2761	Dry					38	1	Due	11/12	14HO15831	14HO14415	7HO13492	11/30/22	3	3	3	3	3	14		

**10 Close Up Pen | 4 3rd & 4th Lact Dry Cows | Due 11-12 to 11-19 | Some Will Be Fresh**

ID	Fresh						53	3.5	Repro	Date	ServSireCode	SireCode	MGSCode	BrthDate	3	3	3	4	4	18	Comment
		Milk	ECM	Fat%	Pro%	SCC	Lact	U							F	L	S	B	#		
2206	Dry					68	4	Due	11/12	14HO15926	7HO11725	7HO11283	9/15/19	3	3	3	4	4	17		
2223	Dry					40	4	Due	11/12	14HO15926	7HO11893	7HO8946	10/13/19	3	3	3	4	4	18		
2241	Dry					72	3	Due	11/19	14HO15926	7HO12432	7HO11283	12/2/19	4	2	2	4	4	20	4 ★ Udder	
2428	Dry					33	3	Due	11/12	14HO15831	7HO13492	7HO10375	1/13/21	3	2	3	3	3	16		

**11 8 1st Lact Dry Cows | Due 11-26 to 12-3**

ID	Fresh						43	1	Repro	Date	ServSireCode	SireCode	MGSCode	BrthDate	4	3	3	3	3	14	Comment
		Milk	ECM	Fat%	Pro%	SCC	Lact	U							F	L	S	B	#		
2750	Dry					62	1	Due	12/10	7HO15967	14HO14810	7HO11725	11/2/22	4	3	3	3	3	14	4 ★ Udder	
2757	Dry					21	1	Due	12/3	7HO15636	7HO13826	7HO11283	11/28/22	4	3	3	3	3	14	4 ★ Udder	
2777	Dry					56	1	Due	12/16	7HO17137	14HO14464	7HO11525	12/16/22	5	4	4	3	3	15	4 ★ Udder R&W	
2790	Dry					78	1	Due	12/3	14HO15831	7HO14592	7HO13492	1/10/23	4	3	3	3	3	13	4 ★ Udder	
2795	Dry					18	1	Due	12/3	14HO15831	7HO14592	7HO13492	1/15/23	4	3	3	3	3	14	4 ★ Udder	
2804	Dry					23	1	Due	11/26	14HO15926	7HO14132	7HO11617	2/3/23	4	4	4	3	3	14	4 ★ Udder	
2807	Dry					33	1	Due	12/27	7HO16396	14HO14629	7HO11708	2/11/23	4	3	3	4	3	14	4 ★ Udder	
2809	Dry					50	1	Due	12/3	14HO15831	7HO14132	7HO13492	2/13/23	3	3	3	3	3	14		

**12 8 1st Lact Dry Cows | Due 1-6 to 1-14**

ID	Fresh						78	1	Repro	Date	ServSireCode	SireCode	MGSCode	BrthDate	4	3	3	4	3	14	Comment
		Milk	ECM	Fat%	Pro%	SCC	Lact	U							F	L	S	B	#		
2689	Dry					206	1	Due	1/6	14HO15831	7HO11383	7HO11314	7/6/22	4	3	4	3	3	14	4 ★ Udder	
2714	Dry					49	1	Due	1/14	7HO16396	7HO12945	7HO11725	8/13/22	5	3	3	4	2	14	5 ★ Udder	
2751	Dry					41	1	Due	1/7	250HO16830	14HO14810	7HO11893	11/7/22	4	3	3	4	3	14		
2769	Dry					24	1	Due	1/7	250HO16830	14HO14629	7HO12255	12/9/22	5	3	3	4	4	16	5 ★ Udder	
2770	Dry					23	1	Due	1/8	250HO16830	14HO14587	7HO13093	12/10/22	4	3	3	4	3	14	NO BOT	
2793	Dry					230	1	Due	1/8	250HO16830	14HO14810	7HO12198	1/12/23	3	3	3	4	4	17		
2796	Dry					25	1	Due	1/7	250HO16830	14HO14810	7HO11283	1/17/23	4	3	3	3	3	13	4 ★ Udder	
2806	Dry					22	1	Due	1/6	14HO15831	7HO14132	7HO11617	2/7/23	4	3	3	4	3	13	4 ★ Udder	

**13** 3 1st Lact Dry Cows | Due 11-24 to 11-26 | Smaller Framed

ID	Fresh	67					Lact	Repro	Date	ServSireCode	SireCode	MGSCode	BrthDate	4	3	3	2	3	12	Comment
		Milk	ECM	Fat%	Pro%	SCC								U	F	L	S	B	#	
2776	Dry					45	1	Due	11/26	14HO15926	14HO14587	7HO11725	12/15/22	4	3	3	2	3	12	4 ★ Udder
2784	Dry					18	1	Due	11/26	14HO15926	14HO15054	7HO11893	12/30/22	4	3	3	2	3	13	4 ★ Udder
2812	Dry					138	1	Due	11/24	14HO16222	7HO14132	7HO12533	2/27/23	3	3	3	1	3	12	

**14** 3 1st Lact Dry Cows | Due 11-19 to 1-2

ID	Fresh	401					Lact	Repro	Date	ServSireCode	SireCode	MGSCode	BrthDate	4	3	3	3	3	14	Comment
		Milk	ECM	Fat%	Pro%	SCC								U	F	L	S	B	#	
2723	Dry					762	1	Due	11/22	14HO16222	14HO7868	7HO11893	9/7/22	4	4	3	3	3	13	4 ★ Udder
2755	Dry					15	1	Due	11/19	14HO16222	14HO14587	7HO11283	11/24/22	4	2	2	3	3	14	4 ★ Udder NFT HW-LR
2789	Dry					427	1	Due	1/2	7HO16396	14HO14810	7HO11546	1/10/23	5	3	4	3	3	14	5 ★ Udder

**15** 9 Dry 2nd Lact Cows | Due 12-3 to 1-15

ID	Fresh	67					Lact	Repro	Date	ServSireCode	SireCode	MGSCode	BrthDate	4	3	3	3	3	15	Comment
		Milk	ECM	Fat%	Pro%	SCC								U	F	L	S	B	#	
2533	Dry					353	2	Due	1/14	7HO16396	7HO12849	7HO11767	8/17/21	3	3	3	4	4	20	NoBot
2536	Dry					22	2	Due	12/18	7HO16083	7HO12849	7HO12255	8/17/21	3	3	3	3	4	15	
2555	Dry					26	2	Due	1/13	7HO14694	7HO14060	7HO13140	9/27/21	4	3	3	4	4	15	4 ★ Udder
2560	Dry					57	2	Due	12/31	7HO16396	7HO12418		10/9/21	4	3	3	3	3	15	4 ★ Udder
2571	Dry					15	2	Due	11/22	14HO16222	7HO12849	7HO11893	10/29/21	5	3	3	3	3	15	5 ★ Udder
2593	Dry					21	2	Due	12/3	14HO15831	14HO13858	7HO11893	11/27/21	4	3	3	3	3	14	4 ★ Udder
2632	Dry					16	2	Due	1/15	250HO16830	7HO13598	7HO11546	1/22/22	4	3	3	3	3	14	4 ★ Udder
2638	Dry					50	2	Due	1/5	7HO15967	7HO13598		2/1/22	5	3	4	3	4	15	5 ★ Udder
2643	Dry					45	2	Due	1/6	7HO15967	7HO11383		2/28/22	3	3	3	4	3	15	

**16** 6 Dry 2nd Lact Cows | Due 11-19 to 1-7 | 🚩

ID	Fresh	34					Lact	Repro	Date	ServSireCode	SireCode	MGSCode	BrthDate	4	2	3	4	3	15	Comment
		Milk	ECM	Fat%	Pro%	SCC								U	F	L	S	B	#	
2545	Dry					15	2	Due	12/17	14HO14810	7HO12784	7HO11283	9/6/21	4	2	2	4	3	17	4 ★ Udder NFT
2556	Dry					36	2	Due	1/7	7HO16396	7HO12449	7HO11283	9/27/21	4	2	3	4	3	14	4 ★ Udder
2580	Dry					18	2	Due	11/19	7HO15636	14HO14464	551HO5808	11/8/21	4	2	2	4	3	15	4 ★ Udder NFFT
2619	Dry					45	2	Due	12/24	7HO17137	7HO13826	7HO12740	12/29/21	3	2	3	4	3	15	
2622	Dry					36	2	Due	12/18	7HO15967	14HO13858		1/3/22	4	2	2	3	4	16	4 ★ Udder NFT
2624	Dry					52	2	Due	12/10	7HO15967	7HO13826	7HO12023	1/6/22	3	2	3	3	3	14	NFT Sw Back Hock

**17** READY TO GO DRY | 7 Preg 1st & 2nd Lact Cows | Due 1-21 to 2-18

ID	Fresh	53	68	5.0	4.1	51	2	Repro	Date	ServSireCode	SireCode	MGSCode	BrthDate	4	3	3	3	4	15	Comment
		Milk	ECM	Fat%	Pro%	SCC	Lact							U	F	L	S	B	#	
2507	11/23/24	33	46	5.8	4.3	123	2	Due	2/4	7HO16396	7HO12449	7HO12920	7/17/21	4	4	3	4	5	20	4 ★ Udder
2550	11/17/24	31	42	5.6	4.2	115	2	Due	1/28	250HO16286		7HO12255	9/13/21	4	3	3	3	4	15	4 ★ Udder
2587	8/28/24	58	72	4.7	4	29	2	Due	1/28	7HO14694	7HO13598	7HO11725	11/17/21	5	4	4	4	4	17	5 ★ Udder
2615	1/22/25	72	83	4	3.9	13	2	Due	2/18	7HO15967	14HO13858	7HO12111	12/25/21	4	3	3	2	3	14	4 ★ Udder
2735	10/6/24	52	71	5.4	4.1	13	1	Due	1/28	7HO14694	14HO7868	7HO12518	9/25/22	4	3	3	3	3	14	4 ★ Udder
2773	12/6/24	66	84	5	3.9	33	1	Due	1/21	7HO14694	14HO14587	7HO11893	12/14/22	5	3	3	3	3	14	5 ★ Udder
2813	1/15/25	60	76	4.8	4	31	1	Due	1/22	7HO16396	7HO12897	7HO13492	3/5/23	5	3	4	4	3	14	5 ★ Udder

**18** 5 Fresh / Serviced 1st Lact Heifers | Fresh 8-2 to 10-27 | 🚩

ID	Fresh	70	4.2		3.1	48	2	Repro	Date	ServSireCode	SireCode	MGSCode	BrthDate	4	3	3	3	3	12	Comment
		Milk	ECM	Fat%	Pro%	SCC	Lact							U	F	L	S	B	#	
2873	8/2/25	64	65	3.2	3.5	93	1	Bred	10/8	7HO17137	14HO14464	7HO12165	1/11/21	4	3	2	3	3	12	4 ★ Udder
2874	10/27/25						1				7HO15365	7HO13605	8/5/23	4	2	3	4	3	12	4 ★ Udder
2885	9/5/25	72		4.7	3	31	1	Bred	10/22	7HO17155	7HO14060	7HO11283	1/4/21	4	3	2	4	3	12	4 ★ Udder
2894	9/5/25	75		4.6	2.8	19	1				7HO15139	7HO13140	7/4/23	3	3	3	3	3	11	HOBBLER
2897	9/28/25						1				7HO15365	7BS852	9/7/2023	3	3	4	3	3	12	SL-LRR, Limp-LF

**19** 3 1st Lact Heifers (2 Serviced) | Fresh 6-3 to 6-27 | 🚩

ID	Fresh	76	95	3.9	3.5	22	1	Repro	Date	ServSireCode	SireCode	MGSCode	BrthDate	4	3	3	3	3	12	Comment
		Milk	ECM	Fat%	Pro%	SCC	Lact							U	F	L	S	B	#	
2828	6/3/25	80	95	3.6	3	13	1	Bred	10/11	7HO14694	7HO13741	7HO13159	7/30/22	3	3	3	3	3	12	Horns, NFFT, HW-LR
2831	6/11/25	67	101	4.2	3.9	31	1				7HO13826	7HO12518	6/18/21	4	3	3	4	3	13	Bad Eye
2899	6/27/25	80	88	4	3.5	23	1	Bred	10/22	250HO16115			6/1/21	4	2	3	3	2	12	

**20** 7 Serviced 1st Lact Heifers | Fresh 1-18 to 4-15

ID	Fresh	71	69	4.2	3.4	63	1	Repro	Date	ServSireCode	SireCode	MGSCode	BrthDate	4	3	3	3	3	13	Comment
		Milk	ECM	Fat%	Pro%	SCC	Lact							U	F	L	S	B	#	
2754	1/18/25	61	76	4.7	3.9	19	1	Bred	10/22	7HO14694	14HO14587	7HO13093	11/22/22	5	4	3	3	3	13	5 ★ Udder
2848	5/7/25	80	4.3	3.3	3.1	25	1	Bred	8-Oct	7HO17132	7HO15094	7HO14060	6/27/2023	4	3	3	4	3	12	
2815	2/19/25	80	90	4.2	3.3	31	1	Bred	10/7	7HO17002	14HO14906	7HO12708	3/11/23	4	3	2	4	3	13	4 ★ Udder
2830	3/1/25	80	87	4	3.2	283	1	Bred	10/7	7HO17132	7HO15607	7HO11893	5/8/23	4	3	3	3	3	13	4 ★ Udder
2837	3/10/25	61	72	4.6	3.3	19	1	Bred	9/9	250HO17212	7HO15275	7HO12823	5/22/23	5	4	4	3	3	13	5 ★ Udder
2839	4/22/25	67	77	4.4	3.3	33	1	Bred	9/24	7HO17132	7HO15094	7HO13826	6/3/23	3	3	3	4	3	12	
2863	4/15/25	67	77	4.3	3.5	29	1	Bred	10/8	7HO17132	7HO12897	7HO11283	7/16/23	3	3	3	3	3	13	NFFT, SL SW Hock

**21** 4 Preg 1st Lact Heifers | Due 2-11 to 2-25 | 🚩

ID	Fresh	55	68	4.9	4.1	65	1	Repro	Date	ServSireCode	SireCode	MGSCode	BrthDate	4	2	2	4	3	13	Comment
		Milk	ECM	Fat%	Pro%	SCC	Lact							U	F	L	S	B	#	
2698	6/23/24	57	72	4.7	4.2	100	1	Due	2/11	250HO16286	14HO13748	7HO13093	7/25/22	3	2	2	4	3	13	NFT
2766	1/24/25	67	78	4.3	3.7	31	1	Due	2/25	7HO14694	14HO14587	7HO12823	12/6/22	4	2	2	4	3	14	4 ★ Udder NFT
2798	12/18/24	35	52	6	4.7	100	1	Due	2/25	7HO14694	7HO14592	7HO12014	1/20/23	3	2	2	3	3	13	NFT
2801	2/15/25	60	70	4.4	3.6	29	1	Due	2/25	7HO14694	7HO14592	7HO13492	1/28/23	4	2	2	3	3	12	4 ★ Udder

**22** 8 Fresh 2nd Lact Cows | Fresh 8-20 to Sale Day | 🚩

ID	Fresh	2						Repro	Date	ServSireCode	SireCode	MGSCode	BrthDate	4	2	3	3	3	14	Comment
		Milk	ECM	Fat%	Pro%	SCC	Lact							U	F	L	S	B	#	
2686	10/4/25						2				7HO12533	7HO12023	11/9/20	4	2	3	4	3	15	4 ★ Udder NFFT
2644	9/2/25						2				7HO12945	7HO11617	3/1/22	2	2	2	3	2	13	LLR, NFT
2763	8/7/25	117	121	3.9	2.6	15	2				7HO11893	7HO9703	2/2/20	4	3	3	4	2	13	4 STAR, SW Hock
2707	10/5/25						2				14HO14464	7HO12165	4/25/21	3	2	5	2	3	17	
2709	8/29/25	86	100	4.2	3.8	29	2				7HO13741	7HO13284	8/7/22	4	2	3	4	2	14	Wry Face
2729	11/3/25						2				7HO12945	7HO12432	9/11/22	4	2	3	4	4	16	4 ★ Udder
2745	Fresh						2				7HO12868	7HO10375	10/16/22	4	3	2	3	3	14	4 ★ Udder Sw- L Hock
2797	10/23/25						2				14HO14810	7HO11617	1/19/23	3	2	3	3	3	13	RevTilt

**23** 7 Serviced 2nd Lact Cows | Fresh 3-19 to 8-16

ID	Fresh	82	91	3.9	3.3	37	2	Repro	Date	ServSireCode	SireCode	MGSCode	BrthDate	4	3	3	3	3	14	Comment
		Milk	ECM	Fat%	Pro%	SCC	Lact							U	F	L	S	B	#	
2642	5/11/25	101	96	3.2	2.9	13	2	Bred	10/1	7HO17137	7HO13826	7HO12165	2/26/22	4	3	3	3	3	12	4 ★ Udder
2656	3/19/25	58	66	4.2	3.6	57	2	Bred	10/4	7HO15967	7HO13598	7HO13140	3/24/22	5	3	3	3	3	13	5 ★ Udder
2673	5/16/25	74	91	4.3	3.3	25	2	Bred	10/8	7HO17132	7HO15094	7HO14060	6/27/23	4	3	3	3	3	14	4 ★ Udr, Old Lump Jaw
2679	6/12/25	94	103	3.8	3.7	44	2	Bred	10/1	7HO15967	14HO12604	7HO11525	6/7/22	4	3	3	3	3	13	4 ★ Udder
2692	6/18/25	94	115	3.5	3	13	2	Bred	10/29	250HO17212	14HO13748		5/25/22	4	4	4	3	3	14	4 ★ Udder, R&W
2713	8/16/25	65	80	4.1	3.1	38	2	Bred	10/8	7HO17132	7HO14705	7HO12449	9/7/23	4	3	3	4	3	15	4 ★ Udder
2726	6/29/25	87	88	4	3.3	66	2	Bred	9/24	7HO17132	14HO15491	7HO13284	7/2/23	3	3	3	3	3	14	

**24** 7 Preg 2nd Lact Cows | Due 3-4 to 6-17

ID	Fresh	71	85	4.6	3.7	26	2	Repro	Date	ServSireCode	SireCode	MGSCode	BrthDate	4	3	3	4	3	14	Comment
		Milk	ECM	Fat%	Pro%	SCC	Lact							U	F	L	S	B	#	
2527	11/24/24	52	73	5.6	4.4	87	2	Due	6/10	7HO17155	7HO14060	7HO11893	8/9/21	4	3	3	5	3	17	4 ★ Udder
2634	3/27/25	67	79	4.6	3.4	19	2	Due	3/11	7HO14694	7HO13716	7HO12518	1/27/22	4	3	3	3	3	12	4 ★ Udder
2658	4/18/25	80	92	4.2	3.6	20	2	Due	3/18	7HO15967	14HO13858	7HO11893	3/28/22	5	3	3	3	3	13	5 ★ Udder
2670	5/13/25	74	87	4.4	3.7	13	2	Due	4/29	7HO15967	14HO12604	7HO11617	5/7/22	4	3	3	4	3	15	4 ★ Udder
2678	3/15/25	57	70	4.8	3.7	14	2	Due	3/4	250HO16286	14HO13858	7HO11283	6/4/22	4	3	3	3	3	14	4 ★ Udder
2702	6/22/25	80	98	4.8	3.5	14	2	Due	6/10	7HO17132	7HO14026	7HO11275	8/3/22	3	3	3	3	3	13	
2717	7/2/25	87	97	4.1	3.4	13	2	Due	6/17	7HO17155	14HO14464	7HO12409	8/25/22	4	4	4	4	3	15	4 ★ Udder R&W

**25** 6 Preg 2nd Lact Cows | Due 3-19 to 6-3 | 🚩

ID	Fresh	82	88	3.8	3.4	18	2	Repro	Date	ServSireCode	SireCode	MGSCode	BrthDate	4	2	2	3	3	14	Comment
		Milk	ECM	Fat%	Pro%	SCC	Lact							U	F	L	S	B	#	
2494	1/19/25	94	98	3.6	3.3	19	2	Due	4/29	7HO15967	7HO12449	7HO8946	6/26/21	3	2	2	3	3	14	NFT
2495	1/13/25	80	87	3.9	3.5	18	2	Due	6/3	250HO17212	7HO12849	7HO12255	6/26/21	4	2	3	4	3	14	4 ★ Udder
2595	3/18/25	105	105	3.6	2.9	19	2	Due	4/15	7HO14694	7HO11383	72944077	11/30/21	3	2	2	3	3	13	NFT HW-LR
2631	11/24/24	74	82	3.9	3.7	13	2	Due	3/19	7HO15967	7HO13598		1/20/22	4	2	2	4	3	15	4 ★ Udder NFFT
2663	3/17/25	58	61	3.5	3.7	13	2	Due	5/27	250HO17212	14HO12604	7HO13159	4/14/22	4	2	2	3	3	13	4 ★ Udder NFT HW-LR
2693	5/21/25	80	92	4.3	3.5	27	2	Due	5/6	7HO15967	14HO13748	7HO11461	7/13/22	4	2	3	3	3	13	4 ★ Udder NFFT

**26** 5 Preg 2nd Lact Cows | Due 2-4 to 2-25 | 🚩

ID	Fresh	78	86	4.0	3.4	107	2	Repro	Date	ServSireCode	SireCode	MGSCode	BrthDate	4	2	2	3	3	14	Comment
		Milk	ECM	Fat%	Pro%	SCC	Lact							U	F	L	S	B	#	
2568	3/17/25	87	98	4.2	3.4	13	2	Due	2/18	7HO15967	7HO12784	7HO11893	10/26/21	4	2	2	3	2	13	4★ Udder NFT
2569	2/21/25	57	67	4.4	3.8	31	2	Due	2/11	250HO16286	7HO12849	7HO12198	10/27/21	4	2	2	4	3	14	4★ Udder NFT
2588	10/25/24	87	103	4.5	3.6	20	2	Due	2/4	7HO16396	7HO12945		11/17/21	3	2	2	3	3	14	
2601	3/11/25	94	92	3.3	3	460	2	Due	2/25	7HO14694	7HO12945	7HO11525	12/3/21	4	2	3	3	3	14	4★ Udder HW-NFT
2610	3/12/25	65	68	3.7	3.3	13	2	Due	2/25	7HO14694	7HO11383	7HO13140	12/17/21	4	2	2	3	2	13	4★ Udder NFT

**27** 7 Fresh 1st & 2nd Lact | Fresh 7-12 to 9-30 | 🚩

ID	Fresh	94	98	4.5	3.4	33	2	Repro	Date	ServSireCode	SireCode	MGSCode	BrthDate	4	2	3	3	3	13	Comment
		Milk	ECM	Fat%	Pro%	SCC	Lact							U	F	L	S	B	#	
2688	8/31/25	108	116	4.1	3	47	2				14HO13858	7HO11138	12/10/21	4	2	2	4	3	13	NFT, HW-LR Limp
2701	7/28/25	87	88	4.8	3.6	19	2				14HO7823	7HO11283	12/21/22	3	1	2	3	3	13	NFT
2710	8/27/25	93	92	4.3	3.5	18	2	Bred	10/15	250HO17261	7HO12897	7HO13159	7/21/23	3	2	2	3	2	13	NFT
2716	9/30/25						2				7HO15365	7HO12014	6/27/23	4	2	3	4	3	14	NFT
2780	10/2/25						2				7HO12897	7HO11568	9/23/23	4	2	3	3	3	13	
2862	7/12/25	87	95	4.7	3.5	47	1				14HO7868	7HO11725	4/20/22	3	3	3	3	3	11	LLF, LRF
2886	9/22/25						1				250HO14937	7HO11741	12/1/22	5	3	4	4	3	13	1 Blind Eye, Red & White

**28** 5 2nd Lact Cows | Fresh 6-12 to 7-30

ID	Fresh	84	93	4.1	2.8	22	2	Repro	Date	ServSireCode	SireCode	MGSCode	BrthDate	4	3	3	3	3	13	Comment
		Milk	ECM	Fat%	Pro%	SCC	Lact							U	F	L	S	B	#	
2700	7/3/25	94	85	4.6	2.8	19	2				7HO12897	7HO12165	9/4/23	4	3	3	3	3	12	4★ Udder
2866	6/23/25	80	106	4.6	2.8	35	1				7HO12014	7HO11283	4/25/21	3	3	3	3	3	12	
2719	6/20/25	87	100	3.2	2.7	19	2				14HO14464	7HO12848	7/1/22	4	3	3	3	2	13	4★ Udder
2728	7/30/25	72	89	3.8	2.9	15	2				7HO13741	7HO12823	8/11/22	5	3	4	3	3	13	5★ Udder
2738	6/12/25	87	87	4.4	2.8	22	2				7HO15023	7HO12587	10/1/23	4	3	3	4	3	14	4★ Udder

**29** 6 Fresh 3rd Lact Cows | Fresh 9-13 to 10-18

ID	Fresh	3						Repro	Date	ServSireCode	SireCode	MGSCode	BrthDate	4	3	3	3	3	14	Comment
		Milk	ECM	Fat%	Pro%	SCC	Lact							U	F	L	S	B	#	
2457	9/27/25	93		4.6	2.8	35	3	Bred	10/22	250HO17261	250HO15662	7HO13826	9/9/23	3	3	3	3	3	13	
2482	10/18/25						3				7HO12449	7HO12848	6/5/21	3	3	3	5	3	13	
2566	10/10/25						3				7HO12784		10/22/21	4	3	3	4	3	14	4★ Udder
2604	9/30/25						3				250HO15662	7HO13284	8/9/23	5	3	3	3	3	14	5★ Udder
2606	9/13/25	115		4.4	3	13	3				7HO13598	7HO11741	12/11/21	4	3	4	3	3	16	4★ Udder
2607	10/10/25						3				7HO12740	7HO11283	6/16/19	3	3	3	3	3	14	DA Scar

**30 6 Fresh 3rd Lact Cows | Fresh 8-3 to 10-10**

ID	Fresh	94 4.8 2.8 35 3						Repro	Date	ServSireCode	SireCode	MGSCode	BrthDate	4 3 3 4 3 15						Comment
		Milk	ECM	Fat%	Pro%	SCC	Lact							U	F	L	S	B	#	
2436	9/11/25	65		4.6	2.8	18	3				7HO15365	7HO12014	6/29/23	4	3	3	4	2	15	4★Udder-Crkd Head
2508	8/3/25	109	79	5.2	3.1	71	3	Bred	10/15	250HO17261	7HO15365	14HO14464	8/4/23	4	3	2	5	3	16	4★Udder
2511	9/8/25	129		4.8	2.7	19	3				7HO13766	7HO11283	8/11/22	4	3	3	3	3	14	4★Udder
2530	9/2/25	72		4.5	2.6	31	3	Bred	10/22	250HO17261	7HO15621	7HO12823	6/14/23	4	3	3	5	4	17	4★Udder
2563	9/15/25						3				7BS905		9/19/23	3	3	3	4	3	13	
2611	10/10/25						3				7HO12897	7HO11314	5/3/23	3	3	3	4	2	13	

**31 3 Fresh 3rd Lact Cows | Fresh 9-6 to 11-3**

ID	Fresh	3						Repro	Date	ServSireCode	SireCode	MGSCode	BrthDate	4 2 2 4 3 14						Comment
		Milk	ECM	Fat%	Pro%	SCC	Lact							U	F	L	S	B	#	
2519	9/6/25	79		4	2.9	19	3				7HO15275		5/17/23	4	2	2	4	3	12	NFT
2547	11/3/25						3				7HO13605	7HO8946	9/8/21	4	2	2	4	3	16	NFT
2570	10/2/25						3				250HO15662	7HO14060	10/12/23	4	2	3	4	3	15	4★Udder

**32 7 3rd+ Lact Cows (3 Serviced) | Fresh 5-19 to 7-30**

ID	Fresh	93 81 4.2 3.1 25 3						Repro	Date	ServSireCode	SireCode	MGSCode	BrthDate	3 3 3 4 3 14						Comment
		Milk	ECM	Fat%	Pro%	SCC	Lact							U	F	L	S	B	#	
126	6/27/25	80	79	3.8	2.6	81	3				7HO12897	7HO11725	8/16/23	4	3	3	4	3	15	
2367	7/28/25	87	80	4.1	3.4	19	3				7HO12784	7HO11283	10/28/21	4	3	3	4	3	16	4★Udder
2448	7/26/25	101	149	4.8	2.7	19	3				7HO12849	14HO7923	7/24/21	3	3	3	4	2	14	
2111	7/11/25	105	96	5.5	3.6	13	5				7HO13716	7HO11725	9/9/22	3	3	3	4	3	15	
2425	5/19/25	94	3.3	3	3.2	13	3	Bred	10-Sep	7HO17155	7HO14060	7HO11283	1/4/2021	4	3	2	5	2	13	HW-LR
2294	7/27/25	94	89	3.6	3.1	13	4	Bred	10/23	7HO15967	7HO13716	7HO12823	8/2/22	3	3	3	2	2	13	
2503	7/30/25	87	73	4.6	2.8	18	3				7HO13492	7HO12165	2/1/21	3	3	3	4	3	15	NFFT Red & White

**33 3 Preg 3rd Lact Cows | Due 2-4 to 6-5**

ID	Fresh	85 97 4.3 3.6 18 3						Repro	Date	ServSireCode	SireCode	MGSCode	BrthDate	4 3 3 3 2 14						Comment
		Milk	ECM	Fat%	Pro%	SCC	Lact							U	F	L	S	B	#	
2351	1/29/25	101	112	4	3.5	13	3	Due	6/5	7HO14694	7HO11725	7HO12111	8/18/20	3	3	3	4	2	15	
2432	1/11/25	72	85	4.4	3.7	19	3	Due	3/16	7HO16396	7HO12708	7HO9703	1/14/21	4	3	2	3	2	14	4★Udder
2434	2/16/25	80	95	4.5	3.6	23	3	Due	2/4	7HO16396	7HO12533	7HO11546	1/20/21	4	3	3	3	3	14	4★Udder

**34 5 Dry 3rd+ Lact Cows | Due 11-29 to 1-21**

ID	Fresh	53 3						Repro	Date	ServSireCode	SireCode	MGSCode	BrthDate	3 3 3 3 3 13						Comment
		Milk	ECM	Fat%	Pro%	SCC	Lact							U	F	L	S	B	#	
2080	Dry					25	5	Due	11/29	7HO15967	7HO11546	7HO8942	11/26/18	3	3	3	3	3	14	
2333	Dry					49	3	Due	12/24	7HO15636	7HO14060	551HO5808	7/9/20	4	3	4	4	3	17	4★Udder
2371	Dry					200	3	Due	1/21	250HO16286	7HO13093	7HO9703	9/8/20	3	3	3	5	4	20	
2396	Dry					27	3	Due	12/10	7HO15967	7HO12222	7HO10375	11/14/20	4	3	3	3	3	15	4★Udder
2400	Dry					19	3	Due	12/3	7HO15636	7HO12708	7HO12198	11/22/20	3	3	3	3	3	14	

35 3/4 Cow Group   3 Dry 1+ Lact Cows   Due 12-17 to 1-7   🚩																				
ID	Fresh	46 3						Repro	Date	ServSireCode	SireCode	MGSCode	BrthDate	3	3	3	4	4	17	Comment
		Milk	ECM	Fat%	Pro%	SCC	Lact							U	F	L	S	B	#	
2160	Dry					25	4	Due	11/19	7HO15636	7HO12843	7HO11138	7/2/19	3	3	3	4	3	18	3/4, Red & White
2312	Dry					81	3	Due	12/17	14HO14810	7HO11893	7HO11314	6/10/20	3	3	3	5	4	18	3/4-LF NFFT
2802	Dry					33	1	Due	1/7	250HO16830	7HO14592	7HO12533	1/29/23	3	3	3	3	4	14	3/4-LF

36 3 Dry 2nd+ Lact Cows   Due 12-16 to 1-6   🚩																				
ID	Fresh	204 4						Repro	Date	ServSireCode	SireCode	MGSCode	BrthDate	3	2	2	4	4	16	Comment
		Milk	ECM	Fat%	Pro%	SCC	Lact							U	F	L	S	B	#	
1998	Dry					75	5	Due	12/19	7HO15967	7HO11283	7HO13284	6/27/18	3	2	2	3	3	14	NFT Bad Past
2049	Dry					461	5	Due	12/19	7HO15967	7HO11525	7HO11163	9/13/18	3	2	2	4	4	18	
2337	Dry					76	3	Due	1/6	7HO15967	7HO13159	7HO12198	7/18/20	4	2	2	4	4	16	4★ Udder NFT

37 6 Fresh 4th+ Lact Cows   Fresh 8-24 to 10-16																				
ID	Fresh	4						Repro	Date	ServSireCode	SireCode	MGSCode	BrthDate	4	3	3	4	3	15	Comment
		Milk	ECM	Fat%	Pro%	SCC	Lact							U	F	L	S	B	#	
2012	10/3/25						5				7HO11546	7HO12419	2/27/19	4	3	3	5	2	15	NFT
2058	10/16/25						5				7HO11525	7HO12198	10/4/18	4	3	3	5	4	17	
2317	8/24/25	100	104	3.7	3.1	13	4				7HO12823	7HO11568	6/14/20	3	3	2	4	3	14	
2334	10/15/25						4				7HO13159	7HO12111	7/11/20	3	3	3	4	3	15	
2358	10/10/25						4				7HO11725	7HO12111	8/28/20	4	3	3	4	2	14	NFFT
2381	9/1/25	115	98	3.9	2.9	15	4				7HO14705	7HO12823	9/15/23	4	3	2	4	2	14	NFT

38 5 Fresh 4+ Lact Cows   Fresh 9-1 to 10-5   🚩																				
ID	Fresh	100	99	4.1	3.1	141	4	Repro	Date	ServSireCode	SireCode	MGSCode	BrthDate	3	2	2	3	2	12	Comment
		Milk	ECM	Fat%	Pro%	SCC	Lact							U	F	L	S	B	#	
2081	9/1/25	108	87	4.3	3.3	13	6				7HO15365	7HO12784	6/28/23	3	2	3	4	3	16	
2261	9/26/25	118	100	4	3.1	27	4				14HO7868	7HO11283	9/7/22	3	2	2	4	2	15	HW-RR Limp
2335	9/15/25	72	101	3.8	3.5	174	4				7HO13766	7HO12198	8/11/22	4	2	3	4	3	13	NFT
2288	9/19/25	104	108	4.1	2.5	348	4				7HO11725	7HO11283	4/13/20	4	2	3	3	2	15	NFT, No Robot
2395	10/5/25						4				7HO11617	7HO11708	5/4/20	4	2	3	4	3	15	NFFT

39 8 Fresh/Serviced 4+ Lact Cows   Fresh 6-5 to 8-13   🚩																				
ID	Fresh	103	91	4.2	3.1	23	4	Repro	Date	ServSireCode	SireCode	MGSCode	BrthDate	3	2	3	3	3	15	Comment
		Milk	ECM	Fat%	Pro%	SCC	Lact							U	F	L	S	B	#	
1971	8/13/25	100	111	4.9	3	14	6				14HO14415	7HO12533	11/29/22	3	2	2	4	3	15	
2458	7/9/25	130	76	3.9	3.1	33	3				14HO7828	14HO13858	11/21/23	3	2	5	2	3	17	
2152	7/20/25	116	96	4.1	3.3	13	5	Bred	9/24	7HO17132	7HO13741	7HO12432	10/1/22	3	2	2	3	3	14	NFT
2537	7/24/25	72	78	5.1	3	47	3				7HO12897	7HO12115	7/2/23	3	2	2	4	2	14	NFT HW-RR
2431	7/11/25	101	98	3.3	2.9	13	3				7HO14060	7HO12344	3/14/21	2	2	3	3	3	14	IMBALANCE R Side
1840	7/4/25	87	104	4.7	3.5	25	7	Bred	10/8	7HO17137	551HO5808	7HO11351	5/30/17	2	2	2	4	2	15	NFT
2278	6/5/25	94	72	3.5	3	19	4	Bred	10/1	7HO15967	7HO12784	7HO10375	8/19/21	3	2	2	3	2	13	
2360	7/15/25	123	90	3.8	2.9	19	3				7HO12897	7HO11283	7/14/23	3	2	2	4	3	15	NFT, LLR

41 3 Preg 4+ Lact Cows   Due 1-28 to 7-1   🚩																				
ID	Fresh	86 Milk	100 ECM	4.3 Fat%	3.4 Pro%	31 SCC	4 Lact	Repro	Date	ServSireCode	SireCode	MGSCode	BrthDate	3 U	2 F	3 L	3 S	2 B	15 #	Comment
1993	5/9/25	83	99	4.5	3.6	13	5	Due	6/10	250HO17212	7HO13140	551HO5818	6/16/18	3	2	4	3	2	15	NFT
2237	2/7/25	101	119	4.3	3.8	62	4	Due	1/28	7HO16396	7HO11617	7HO11568	11/13/19	3	2	2	3	2	15	NFT NoBot
2291	7/13/25	72	83	4	2.9	19	4	Due	7/1	250HO17212	7HO12784	7HO12848	8/1/21	3	2	2	3	3	14	4★ Udder NFT

42 5 Preg 4+ Lact Cows   Due 6-2 to 6-24																				
ID	Fresh	96 Milk	103 ECM	4.0 Fat%	3.3 Pro%	110 SCC	5 Lact	Repro	Date	ServSireCode	SireCode	MGSCode	BrthDate	3 U	3 F	2 L	4 S	3 B	15 #	Comment
1890	2/13/25	94	92	3.3	3	162	6	Due	6/3	250HO17212	7HO11283	7HO11351	9/12/17	3	3	3	4	3	15	
2048	7/4/25	116	118	3.5	3.2	200	5	Due	6/24	250HO17212	7HO11525	7HO11163	9/10/18	3	3	2	4	3	16	
2151	6/21/25	94	98	3.7	3.2	162	5	Due	6/10	250HO17212	7HO12255		6/14/19	3	3	2	3	2	15	
2242	2/13/25	72	93	5.2	3.6	13	4	Due	6/2	7HO14694		7HO11283	12/3/19	3	3	3	4	4	17	
2282	5/25/25	101	112	4.1	3.3	13	4	Due	6/24	250HO17212	7HO11617	7HO8946	3/24/20	3	3	2	3	2	14	

43 5 Preg 4+ Lact Cows   Due 1-21 to 5-27																				
ID	Fresh	76 Milk	85 ECM	4.1 Fat%	3.4 Pro%	138 SCC	5 Lact	Repro	Date	ServSireCode	SireCode	MGSCode	BrthDate	3 U	3 F	2 L	4 S	3 B	16 #	Comment
1852	6/9/25	91	103	4.3	3.4	76	7	Due	5/27	7HO17155	551HO5808	7HO8946	6/25/17	3	3	2	3	3	14	
2026	4/10/25	72	71	3.5	2.7	264	5	Due	5/27	7HO17155	7HO10563	7HO9510	8/15/18	3	3	2	5	3	17	
2091	2/27/25	72	88	4.8	3.5	107	5	Due	5/27	250HO17212	7HO12023	7HO10412	1/5/19	3	3	3	4	4	17	
2283	2/24/25	87	98	3.9	3.9	13	4	Due	2/11	250HO16286	7HO11893	7HO10375	3/25/20	4	3	2	3	3	15	4★ Udder
2258	12/22/24	58	65	4.2	3.4	230	4	Due	1/21	250HO16286	7HO12255	7HO12165	1/24/20	4	3	3	3	4	16	4★ Udder, NoBot

44 5 Fresh 3rd+ Lact Cows   Fresh 8-22 to 10-23   🚩																				
ID	Fresh	Milk	ECM	Fat%	Pro%	SCC	5 Lact	Repro	Date	ServSireCode	SireCode	MGSCode	BrthDate	3 U	2 F	2 L	4 S	3 B	14 #	Comment
1784	10/23/25						7				7HO11163	7HO11141	12/12/16	3	3	2	5	3	17	DA Scar, NFT HW-LR
1940	10/12/25						5				7HO11525		12/30/17	2	2	2	4	2	13	
2201	8/29/25	72	70	3.4	2.8	13	5				7HO12409	7HO9064	9/7/19	3	1	2	4	3	14	NFT Red & White
2344	8/22/25	57	58	3.4	3.3	13	4				7HO11725	7HO11314	7/29/20	4	2	2	3	3	14	nft
2600	10/11/25						3				7HO13716	7HO12198	12/4/21	3	2	2	4	2	14	NFT, LIMP-RR

46 3/4 Cow Group   4 Preg 1st+ Lact Cows   Due 2-4 to 6-10   🚩																				
ID	Fresh	65 Milk	73 ECM	4.2 Fat%	3.4 Pro%	47 SCC	1 Lact	Repro	Date	ServSireCode	SireCode	MGSCode	BrthDate	3 U	3 F	3 L	3 S	3 B	12 #	Comment
2620	2/15/25	60	76	5.1	3.6	87	2	Due	2/4	7HO16396	7HO12945	7HO11617	12/29/21	3	3	3	3	3	12	3/4-LF HW-LR
2771	12/15/24	67	76	4.1	3.6	20	1	Due	3/4	7HO17155	14HO14464	7HO12344	12/11/22	3	3	3	3	3	13	3/4-LF Bad Eye
2846	6/25/25	67	72	3.9	3.2	13	1	Due	6/10	7HO17132	7HO15094	7HO12014	6/22/23	3	3	3	3	3	12	3/4-RF
2877	5/16/25	67	67	3.5	3	66	1	Due	6/3	7HO14694	7HO12897	7HO12198	8/13/23	3	3	4	3	2	12	NFT-Limp

**47 3/4 Cow Group | 4 Preg 3rd+ Lact Cows | Due 1-26 to 3-16 | 🚩**

ID	Fresh	65	76	4.4	3.6	83	5	Repro	Date	ServSireCode	SireCode	MGSCode	BrthDate	3	3	3	4	4	17	Comment
		Milk	ECM	Fat%	Pro%	SCC	Lact							U	F	L	S	B	#	
1796	2/25/25	51	60	4.5	3.7	87	7	Due	6/3	250HO17212	7HO11283	7HO10039	1/15/17	3	3	3	4	4	18	3/4-LF
1907	12/25/24	87	104	4.5	3.7	81	5	Due	6/3	250HO17212	7HO12165	7HO11283	10/8/17	3	2	2	3	3	15	3/4-LF Bad Eye
2059	1/6/25	58	68	4.4	3.6	162	5	Due	1/26	7HO15967	7HO13919	7HO8925	10/8/18	3	3	2	4	4	18	3/4-RR
2384	2/15/25	65	73	4.1	3.5		3	Due	3/16	7HO16396	7HO11893	7HO11314	10/25/20	3	3	3	3	4	16	3/4-RR

**48 5 Preg 3rd+ Lact Cows | Due 1-21 to 5-22 | 🚩**

ID	Fresh	50	60	3.9	3.0	56	4	Repro	Date	ServSireCode	SireCode	MGSCode	BrthDate	3	3	3	4	3	16	Comment
		Milk	ECM	Fat%	Pro%	SCC	Lact							U	F	L	S	B	#	
1751	1/6/25	58	70	4.6	3.7	152	7	Due	1/16	7HO15967	7HO11283	7HO11351	9/21/16	3	3	3	5	4	19	NFT
2082	5/21/25	62	68	4.2	3.1	20	5	Due	5/27	250HO17212	7HO11283		12/5/18	3	2	2	3	3	14	NFT-Limp
2343	2/13/25	44	59	5.8	3.5	18	3	Due	1/28	7HO17137	7HO14435	7HO11141	7/29/20	3	3	3	3	3	14	Neck Abcess R&W
2346	7/21/24	52	67	4.9	4.1	132	3	Due	1/21	250HO16286	7HO13284	7HO11525	8/1/20	3	3	3	4	5	18	LLF LLR
2483	5/6/25	87	94	3.8	3.5	13	3	Due	5/22	250HO16286	7HO12568	7HO11283	6/9/21	3	2	2	4	2	14	LLF LRF

**49 5 Serviced 3rd+ Lact Cows | Fresh 1-20 to 4-18 | 🚩**

ID	Fresh	77	89	4.5	3.3	142	3	Repro	Date	ServSireCode	SireCode	MGSCode	BrthDate	3	2	2	3	3	14	Comment
		Milk	ECM	Fat%	Pro%	SCC	Lact							U	F	L	S	B	#	
2194	4/2/25	58	60	3.8	2.9	81	4	Bred	10/15	7HO15967	7HO12432	7HO11163	8/24/19	4	2	3	4	2	15	NFFT
2279	4/18/25	72	87	4.8	3.3	152	4	Bred	10/15	7HO15967	7HO11725	551HO5818	3/16/20	2	2	2	3	3	14	NFT
2377	1/20/25	80	99	4.9	3.6	400	3	Bred	10/22	7HO14694	7HO13093	7HO12330	9/25/20	4	3	3	3	3	14	
2379	4/2/25	94	106	4.5	2.9	35	3	Bred	10/15	7HO15967	7HO13093	7HO8946	10/8/20	4	2	2	3	3	14	NFT
2408	1/31/25	80	95	4.5	3.7	44	3	Bred	10/21	7HO15967	7HO13492		11/29/20	2	2	2	3	3	13	NFT

**Individual Cows**

ID	Fresh	Milk	ECM	Fat%	Pro%	SCC	Lact	Repro	Date	ServSireCode	SireCode	MGSCode	BrthDate	U	F	L	S	B	#	Comment
1679	11/16/24	27	35	5.1	4	187	7	Due	3/22	7JE1965		7JE590	2/1/16	3	3	3	3	4	11	Jersey
2452	3/2/25	33	50	6.3	4.4	19	3	Due	2/17	7JE1965	7JE5032	7JE1088	3/27/21	3	2	3	3	4	10	Jersey
2489	6/1/25	87	59	4.6	3.2	27	3	Bred	10/22	7JE1965	7JE1151	7JE1000	2/24/19	3	3	3	3	3	11	Jersey
2514	6/17/25	87	107	4.8	3.7	100	3				7BS852		7/27/21	3	4	3	3	3	14	SWISS
2524	Dry					40	2	Due	12/16	7HO17137	7HO14060	7HO12409	8/11/21	2	3	3	3	3	15	lmb L Side R&W
2542	11/10/24	44	59	5.2	4.6	27	2	Due	3/4	7HO17155	7HO12784	7HO12111	8/25/21	4	3	3	4	5	17	4★Udder R&W
2586	11/13/24	31	44	5.9	4.2	100	2	Due	3/18	7HO17155	7HO13826	551HO5818	11/14/21	3	3	3	4	3	15	R&W
2427	5/7/25	65	86	4.4	3.6	66	3	Bred	10/1	7HO17132	7HO13598	7HO11725	5/13/22	3	2	2	5	2	14	NFT, R&W, NO ROBOT

**3000 10 Preg Heifers | Due 12-24 to 1-29 | Medium Flesh, Est Weight 1300#**

ID	217 23287 956 737 1694						Repro	Date	ServSireCode	SireCode	MGSCode	BrthDate	Comment
	pNM\$	Dam	305me	Fat	Pro	CFP							
2890	205	2482	19509	746	922	1668	Due	1/7	250HO16830	250HO15662	7HO12449	8/30/23	
2892	-14	2002	27052	922	740	1662	Due	1/14	250HO16830	14HO15491	7HO11283	9/1/23	
2919	147	1662	32946	1106	866	1972	Due	1/13	14HO15831	250HO15211	7HO11351	11/3/23	
2937	34	2569	22820	931	723	1654	Due	1/8	250HO16830	7HO15094	7HO12849	12/7/23	
2957	188	2549	20905	986	569	1555	Due	1/1	14HO15831	14HO15952	7HO12418	1/2/24	
2960	233	2555	21640	1087	749	1836	Due	1/28	250HO16830	7HO15094	7HO14060	1/6/24	
2965	294	2594	21417	1075	704	1779	Due	1/1	14HO15831	14HO15952	7HO13826	1/11/24	
2976	360	2656	23582	991	773	1764	Due	1/28	250HO16830	14HO15301	7HO13598	2/3/24	
2977	367	2387	20084	820	628	1448	Due	12/24	14HO15831	7HO16292	7HO13492	2/3/24	
2981	353	2420	22916	899	700	1599	Due	1/29	7HO15967	14HO15301	7HO12533	2/8/24	

**3001 4 Preg Red & White Holstein Heifers | Due 1-1 to 2-25 | Medium Flesh, Est Weight 1200#-1300#**

ID	107 23164 902 735 1637						Repro	Date	ServSireCode	SireCode	MGSCode	BrthDate	Comment
	pNM\$	Dam	305me	Fat	Pro	CFP							
2984	15	1852	22962	963	779	1742	Due	1/1	14HO15831	7HO16303	551HO5808	2/16/24	Red & White
2971	92	2422	22044	849	683	1532	Due	1/10	250HO16830	7HO16303	7HO12708	1/29/24	Red & White
2987	74	2343	21898	858	705	1563	Due	1/26	7HO17137	7HO15440	7HO14435	2/27/24	Red & White
2990	245	2427	25753	938	773	1711	Due	2/25	250HO16830	7HO16303	14HO14464	3/7/24	Red & White

**3002 11 Preg Heifers | Due 2-4 to 3-24 | Medium+ Flesh, Est Weight 1100#-1200#**

ID	109 24943 1031 782 1812						Repro	Date	ServSireCode	SireCode	MGSCode	BrthDate	Comment
	pNM\$	Dam	305me	Fat	Pro	CFP							
2969	61	2073	27998	1185	844	2029	Due	2/4	250HO16830	250HO15235	7HO12255	1/26/24	
2925	221	2329	25678	1107	831	1938	Due	2/18	250HO16830	250HO15211	7HO12823	11/15/23	
2988	-130	2348	20629	962	702	1664	Due	2/18	250HO16830	250HO15208	7HO13159	3/5/24	
3026	169	2457	26145	995	781	1776	Due	2/26	250HO16830	7HO16292	7HO12014	6/7/24	
2956	120	2059	27530	1019	806	1825	Due	2/23	250HO16830	7HO16303	7HO13919	1/1/24	
2967	43	1751	25740	957	795	1752	Due	2/18	250HO16830	250HO15235	7HO11283	1/19/24	
2913	152	1733	24184	1023	797	1820	Due	3/4	250HO16830	250HO15235	7HO11461	10/7/23	
2995	232	2646	19980	911	633	1544	Due	3/4	250HO16830	14HO15905	7HO12945	3/24/24	
2998	93	2426	24777	1083	858	1941	Due	3/4	250HO16830	250HO15208	7HO13492	3/26/24	
3003	66	2219	27649	1080	805	1885	Due	3/4	250HO16830	7HO15633	7HO11617	4/8/24	
3011	173	2652	24059	1015	745	1760	Due	3/24	250HO16830	14HO15905	7HO11383	4/24/24	

**3003 13 Preg Heifers | Due 4-1 to 5-27 | Medium+ Flesh, Est Weight 1000#-1100#**

ID	pNM\$	Dam	213	26798	1097	857	1954	Repro	Date	ServSireCode	SireCode	MGSCode	BrthDate	Comment
			305me	Fat	Pro	CFP								
3009	304	2397	28478	915	926	1841		Due	4/1	250HO16830	7HO15633	7HO13492	4/19/24	
3046	343	2346	31426	1346	1082	2428		Due	4/8	250HO16830	7HO16114	7HO13284	7/21/24	
3033	280	1968	24614	896	643	1539		Due	4/14	250HO16839	7HO15465	7HO11283	7/2/24	
3016	218	2662	20526	984	752	1736		Due	4/22	250HO16839	14HO15905	14HO14464	5/4/24	
3014	-19	1718	27780	1191	878	2069		Due	4/29	250HO16839	7HO15440	551HO5818	4/27/24	Red & White Nose Guard
2953	198	2601	29394	1032	826	1858		Due	4/8	250HO16830	7HO15094	7HO12945	12/30/23	
3007	34	1840	26450	1101	922	2023		Due	5/13	250HO16839	7HO15440	551HO5808	4/14/24	Red & White
3008	218	2674	25975	1144	870	2014		Due	5/7	250HO16839	14HO15905	14HO12604	4/18/24	
3005	168	2666						Due	5/13	250HO16839	14HO15905	14HO12604	4/9/24	
3018	196	2278	27777	1098	843	1941		Due	5/13	250HO16839	7HO15518	7HO11617	5/10/24	
3021	398	1741	25249	1199	846	2045		Due	5/20	250HO16839	7HO15597	7HO12021	5/28/24	
3039	103	1932	27001	1059	797	1856		Due	5/25	250HO16839	7HO15633	7HO11283	7/10/24	
2946	328	943	26904	1204	897	2101		Due	5/27	250HO16839	250HO15211		12/14/23	

**3004 14 Preg Heifers | Due 5-26 to 7-3 | Medium+ Flesh, Est Weight 1000#-1100#**

ID	Pen	pNM\$	Dam	188	26606	1056	833	1889	Repro	Date	ServSireCode	SireCode	MGSCode	BrthDate	Comment
				305me	Fat	Pro	CFP								
3006	PC	74	2274	24800	1114	803	1917		Due	5/27	250HO16839	14HO15905	7HO11617	4/12/24	
3025	PC	225	2483	22556	897	741	1638		Due	6/3	250HO16839	7HO15633	7HO12568	6/6/24	
3027	PC	125	2505	22541	841	676	1517		Due	6/30	250HO16839	14HO15903	7HO12849	6/18/24	
3028	PC	214	2431	29456	1136	1017	2153		Due	6/9	250HO16839	7HO15440	7HO14060	6/20/24	
3001	PS	348	2106	29294	981	866	1847		Due	5/13	250HO16839	7HO16292	7HO12023	4/3/24	
3030	PC	348	2698	25554	994	812	1806		Due	6/24	250HO16839	14HO15903	14HO13748	6/23/24	
3031	PC	147	2491	27248	1053	942	1995		Due	6/17	250HO16839	7HO15440	7HO13826	6/24/24	
3035	PC	-58	1784	26359	1161	859	2020		Due	6/13	250HO16839	14HO14464	7HO11163	7/5/24	Red & White
3038	PC	319	2692	28606	1230	843	2073		Due	6/19	250HO16839	14HO15903	7HO12344	7/9/24	
3045	PC	138	1945	29749	1051	848	1899		Due	6/6	250HO16839	7HO16114	7HO12198	7/21/24	
3048	PC	77	2458	28585	1135	781	1916		Due	6/17	250HO16839	7HO15440	14HO14464	7/22/24	
3051	PC	71	2449	21752	901	694	1595		Due	7/3	250HO16839	7HO15440	7HO13826	7/26/24	
3055	PC	270	2689	32483	1242	979	2221		Due	5/26	250HO16839	14HO15903	7HO11383	8/4/24	
3067	PC	329	2294	23500	1046	801	1847		Due	7/3	250HO16839	7HO15597	7HO11617	8/24/24	

**3005 3 Preg Heifers | Due 12-10 to 12-31 | Medium Flesh, Est Weight 1200#-1300# | 🚩**

ID	Pen	pNM\$	Dam	63	25517	969	771	1739	Repro	Date	ServSireCode	SireCode	MGSCode	BrthDate	Comment
				305me	Fat	Pro	CFP								
2920		52	2553	25615	1099	824	1923		Due	12/10	7HO15967	7HO15440	14HO14464	11/6/23	Blind-LE
2940		-149	2373	18713	527	471	998		Due	12/24	14HO15831	14HO14947	7HO12823	12/8/23	Blind-LE
2945		285	2055	32223	1280	1017	2297		Due	12/31	14HO15831	14HO15557	7HO12111	12/14/23	HW-lr

**3006** 4 Preg Heifers | Due 4-22 to 6-17 | Medium+ Flesh, Est Weight 1000#-1100# | 🚩

ID	Pen	247 29210 1126 906 2033						Repro	Date	ServSireCode	SireCode	MGSCode	BrthDate	Comment
		pNM\$	Dam	305me	Fat	Pro	CFP							
3015		140	2672					Due	4/22	250HO16839	14HO15905	14HO12604	5/2/24	BLIND-RE, NOSE GUARD
3029		221	2353	30921	1122	1055	2177	Due	6/12	250HO16839	14HO15903	7HO13284	6/21/24	CLOUDY BOTH EYES
2966		278	2389	28195	991	802	1793	Due	5/6	250HO16839	14HO14629	7HO13492	1/12/24	HW-LR
3032		347	1870	28515	1266	862	2128	Due	6/17	250HO16839	7HO15597	7HO12198	6/25/24	HW-LR

**3007** 15 Serviced Heifers | Bred 10-8 to 10-29 | Medium+ Flesh, Est Weight 800#-1000#

ID	Pen	302 27270 1107 862 1969						Repro	Date	ServSireCode	SireCode	MGSCode	BrthDate	Comment
		pNM\$	Dam	305me	Fat	Pro	CFP							
3034	BP	217	2717	26339	1079	834	1913	Bred	10/29	7HO17002	14HO15903	14HO14464	7/4/24	
3036	BP	285	2671	25205	1081	801	1882	Bred	10/28	7HO17002	14HO15903	14HO12604	7/8/24	
3037	BP	328	2738	32143	1277	1026	2303	Bred	10/8	7HO17002	14HO15903	7HO13741	7/9/24	
3041	BP	345	2746	28139	1090	862	1952	Bred	10/8	250HO16839	14HO15903	14HO14906	7/14/24	
3047	BP	289	2288	27089	1029	825	1854	Bred	10/3	250HO16839	7HO16114	7HO11725	7/22/24	
3049	BP	280	2719	27297	1300	866	2166	Bred	10/15	7HO17002	14HO15903	14HO12604	7/24/24	
3050	BP	307	2704	22362	903	654	1557	Bred	10/15	7HO17002	14HO15903	7HO13766	7/25/24	
3052	BP	244	2121	28615	1126	911	2037	Bred	10/22	7HO17002	7HO15597	7HO12023	7/27/24	
3054	BP	252	2720	28220	1060	911	1971	Bred	10/22	7HO17002	14HO15903	14HO12604	8/2/24	
3058	BP	348	2759	25830	1078	831	1909	Bred	10/28	7HO17002	14HO15903	14HO14415	8/12/24	
3059	BP	247	2206	26137	919	713	1632	Bred	10/29	7HO17002	7HO16114	7HO11725	8/12/24	
3061	BP	376	2683	28796	1215	969	2184	Bred	10/7	7HO17132	14HO15903	14HO7868	8/17/24	
3064	BP	320	2725	31373	1259	1015	2274	Bred	10/29	7HO17002	14HO15903	14HO7868	8/21/24	
3065	BP	290	2728	20458	1035	735	1770	Bred	10/29	7HO17002	14HO15903	7HO13716	8/21/24	
3087	BP	408	2751	31047	1153	978	2131	Bred	10/8	250HO16839	7HO16114	14HO14810	9/19/24	

**3008 25 Open Heifers | Born 8-30-24 to 11-8-24 | Medium+ Flesh, Est Weight 700#-900#**

ID	Pen	273 28640 1133 915 2048						Repro	Date	ServSireCode	SireCode	MGSCode	BrthDate	Comment
		pNM\$	Dam	305me	Fat	Pro	CFP							
3074	BP	194	2066	29731	1158	1004	2162				7HO16114	7HO12255	8/30/24	
3075	BP	192	2060	28201	1017	808	1825				7HO16114	7HO11741	8/30/24	
3077	BP	318	2536	32473	1544	1162	2706				14HO15903	7HO12849	9/3/24	
3079	BP	287	1969	26899	1158	818	1976				7HO15597	7HO11283	9/8/24	
3081	BP	316	2707	25847	1055	901	1956				14HO15903	7HO13741	9/10/24	
3083	BP	117	2188	25705	1062	837	1899				7HO16114	7HO11617	9/12/24	
3085	BP	144	2231	23476	1015	810	1825				7HO16114	7HO11617	9/15/24	
3086	BP	293	2023	31779	857	935	1792				7HO15597	7HO11314	9/18/24	
NT	BP													Slice R Ear
3090	BP	356	2081	27668	953	838	1791				7HO15597	7HO11546	9/23/24	
3091	BP	516	2381	30476	1296	1035	2331				7HO15465	7HO12533	9/26/24	
3092	BP	180	2780	27037	1120	824	1944				7HO15633	14HO7823	9/27/24	
3093	BP	156	2716	22811	1141	792	1933				7HO15633	14HO14464	9/27/24	
3094	BP	277	2311	25186	1100	796	1896				7HO15465	7HO13159	9/29/24	
3096	BP	322	2782	29242	1027	854	1881				7HO15633	250HO14937	10/2/24	
3098	BP	67	2454	17622	819	613	1432				250JE1947	7JE5032	10/9/24	
3099	BP	261	1999	19600	810	629	1439				7HO15597	7HO13140	10/16/24	
3100	BP	232	2500	28959	1074	1030	2104				7HO16114	7HO12849	10/16/24	
3101	BP	220	2084	34052	1062	921	1983				7HO15597	7HO12255	10/17/24	
3102	BP	215	2737	29895	1067	853	1920				7HO15633	7HO13741	10/22/24	
3103	BP	472	2588	31831	1123	964	2087				7HO15465	7HO12945	10/25/24	
3104	BP	300	2784	29832	1162	1014	2176				7HO15633	14HO15054	10/31/24	
3105	BP	534	2624	30559	1361	1034	2395				7HO15465	7HO13826	11/1/24	
3106	BP	332	2395	26463	1099	861	1960				7HO16114	7HO12533	11/4/24	
3107	BP	255	2068	28017	1138	851	1989				7HO16114	7HO11741	11/5/24	
3108	BP	275	2729	24008	983	778	1761				7HO15633	7HO12945	11/8/24	

**3009 5 Red & White Holstein Serviced/Open Heifers | Born 7-12-24 to 9-10-24 | Medium Flesh, Est Weight 900#-950#**

ID	Pen	75 25503 1075 824 1899						Repro	Date	ServSireCode	SireCode	MGSCode	BrthDate	Comment
		pNM\$	Dam	305me	Fat	Pro	CFP							
3040	BP	137	2503	22746	1336	832	2168	Bred	10/8	7HO17002	7HO15440	14HO14464	7/12/24	Red & White
3043	BP	147	2509	25386	1270	900	2170	Bred	10/1	250HO16839	7HO15440	7HO14060	7/17/24	Red & White
3078	BP	-33	2201	22235	782	680	1462	Bred	10/13	7HO17137	7HO16303	7HO12409	9/5/24	Red & White
3084	BP	233	2357	31150	1118	983	2101	Bred	10/8	7HO17002	7HO16303	7HO13159	9/12/24	Red & White
3080	BP	-109	2167	25996	867	727	1594				7HO16303	7HO12843	9/10/24	Red & White

**3010** 6 Serviced/Open Heifers | Born 4-25-24 to 9-20-24 | Medium+ Flesh, Est Weight 900#-1100# | 🚩

ID	Pen	211					Repro	Date	ServSireCode	SireCode	MGSCode	BrthDate	Comment	
		pNM\$	Dam	305me	Fat	Pro								
3042	BP	318	2475	26812	917	876	1793	Bred	10/15	7HO17002	14HO15903	7HO13605	7/16/24	Limp-LR
3053	BP	377	2748	21596	984	700	1684	Bred	10/22	7HO17002	14HO15903	14HO14906	7/28/24	Sw Hock-NFT
3013	BP	-72	1652	28643	1067	842	1909				250HO15208	7HO11283	4/25/24	
3044	BP	198	2506	27884	1130	859	1989				7HO15633	7HO12568	7/18/24	
3017	BP	261	2658	25753	1010	865	1875	Bred	10/6	250HO16839	14HO15905	14HO13858	5/5/24	
3088	BP	181	2742	24307	942	792	1734				7HO15633	7HO13766	9/20/24	Navel

**3011** 20 Open Heifers | Born 11-8-24 to 12-15-24 | Medium+ Flesh, Est Weight 700#-800#

ID	Pen	290					Repro	Date	ServSireCode	SireCode	MGSCode	BrthDate	Comment	
		pNM\$	Dam	305me	Fat	Pro								
3109	WF-O	225	2611	24172	807	684	1491				7HO15633	7HO13716	11/8/24	
3110	WF-O	120	2512	24944	1038	808	1846				7HO15633	7HO12849	11/9/24	
3111	WF-O	347	2755	29813	1170	839	2009				7HO15633	14HO14587	11/9/24	
3116	WF-O	322	2550	20388	940	669	1609				7HO16114		11/17/24	
3118	WF-O	437	2797	24977	1058	813	1871				14HO15903	14HO14810	11/18/24	
3120	WF-O	129	2631	24682	930	814	1744				7HO15633	7HO13598	11/24/24	
3121	WF-O	192	2527	25261	1104	899	2003				7HO15440	7HO14060	11/24/24	
3122	WF-O	417	2752	26627	1039	780	1819				14HO15903	14HO14587	11/26/24	
3123	WF-O	340	2761	27967	993	877	1870				14HO15903	14HO14415	11/26/24	
3124	WF-O	256	2767	24618	1075	796	1871				14HO15903	14HO14415	11/27/24	
3126	WF-O	166	1812	23029	912	720	1632				7HO15597	7HO8946	11/30/24	
3127	WF-O	210	2703	21287	823	606	1429				7HO15633	7HO13826	12/1/24	
3128	WF-O	333	2339	28108	997	772	1769				7HO15597	7HO13159	12/2/24	
3129	WF-O	376	2443	25786	1230	848	2078				7HO16114	7HO12533	12/3/24	
3130	WF-O	376	2443	25786	1230	848	2078				7HO16114	7HO12533	12/3/24	
3132	WF-O	253	2567	32051	1120	905	2025				7HO16114	7HO12784	12/5/24	
3133	WF-O	409	2049	26494	1074	862	1936				7HO15597	7HO11525	12/8/24	
3134	WF-O	471	2776	28880	1074	954	2028				14HO15903	14HO14587	12/9/24	
3135	WF-O	122	2160	28280	1080	756	1836				7HO16303	7HO12843	12/10/24	
3138	WF-O	289	2187	34141	1136	967	2103				7HO16114	7HO11767	12/15/24	

**3012 18 Open Heifers | Born 12-15-24 to 1-29-25 | Medium+ Flesh, Est Weight 600#-700#**

ID	Pen	303						Repro	Date	ServSireCode	SireCode	MGSCode	BrthDate	Comment
		pNM\$	Dam	305me	Fat	Pro	CFP							
3139	WF-O	406	2190	29308	1218	968	2186				7HO15597	7HO14060	12/15/24	
3140	WF-O	312	2771	25673	994	816	1810				14HO15903	14HO14464	12/15/24	
3141	WF-O	214	2757	25663	991	798	1789				14HO15903	7HO13826	12/17/24	
3143	WF-O	328	2798	17381	951	689	1640				14HO15903	7HO14592	12/18/24	
3144	WF-O	310	2083	27135	948	822	1770				7HO15597	7HO12255	12/19/24	
3147	WF-O	403	2312	25797	1101	826	1927				7HO15465	7HO11893	12/30/24	
3148	WF-O	315	2806	27922	1134	870	2004				14HO15903	7HO14132	1/1/25	
3149	WF-O	239	2800	29073	1181	834	2015				7HO16303	7HO14132	1/3/25	
3150	WF-O	261	1895	30642	1255	981	2236				7HO15597	7HO11314	1/7/25	
3151	WF-O	263	2632	24914	1025	780	1805				7HO15633	7HO13598	1/9/25	
3152	WF-O	38	2123	27921	1104	924	2028				7HO15440	7HO12740	1/10/25	
3153	WF-O	177	1882	30512	1016	801	1817				7HO15597	72944077	1/16/25	
3154	WF-O	178	2650	20781	894	667	1561				7HO15633	7HO13716	1/17/25	
3156	WF-O	441	2657	27820	1114	886	2000				7HO15465	14HO13858	1/19/25	
3158	WF-O	475	2615	29422	1163	930	2093				7HO15465	14HO13858	1/22/25	
3159	WF-O	245	2643	23607	888	707	1595				7HO16114	7HO11383	1/22/25	
3160	WF-O	394	2802	21988	916	737	1653				14HO15903	7HO14592	1/22/25	
3161	WF-O	446	2351	29288	1130	966	2096				7HO15597	7HO11725	1/29/25	

**3013 13 Open Heifers | Born 2-2-25 to 3-18-25 | Medium Flesh, Est Weight 450#-550#**

ID	Pen	313						Repro	Date	ServSireCode	SireCode	MGSCode	BrthDate	Comment
		pNM\$	Dam	305me	Fat	Pro	CFP							
3164	WF-O	256	2788				0				14HO15903	7HO14592	2/2/25	
3165	WF-O	352	2779	27641	934	840	1774				14HO15903	14HO15054	2/4/25	
3166	WF-O	284	2129	28448	881	87	968				7HO15597	7HO12255	2/9/25	
3167	WF-O	393	2801	23054	950	729	1679				14HO15903	7HO14592	2/15/25	
3169	WF-O	546	2434	25144	1035	799	1834				7HO15465	7HO12533	2/16/25	
3170	WF-O	329	2799	24595	888	777	1665				14HO15903	14HO14629	2/18/25	
3171	WF-O	158	2569	22820	931	723	1654				7HO16114	7HO12849	2/21/25	
3172	WF-O	322	2283	31803	1207	1054	2261				7HO15597	7HO11893	2/24/25	
3174	WF-O	396	2091	27506	1144	811	1955				7HO15597	7HO12023	2/27/25	
3177	WF-O	261	2601	29394	1032	826	1858				7HO16528	7HO12945	3/11/25	
3178	WF-O	429	2791	24475	969	745	1714				14HO15903	7HO14592	3/15/25	
3179	WF-O	212	2663	24172	922	758	1680				7HO16150	14HO12604	3/17/25	
3180	WF-O	126	2595	31256	1001	850	1851				250HO15955	7HO11383	3/18/25	

**3014 5 Red & White Holstein Open Heifers | Born 11-10-24 to 2-1-25 | Medium Flesh, Est Weight 550#-750#**

ID	Pen	216 25955 1063 828 1890						Repro	Date	ServSireCode	SireCode	MGSCode	BrthDate	Comment
		pNM\$	Dam	305me	Fat	Pro	CFP							
3112	WF-O	172	2542	26689	1160	942	2102				7HO16303	7HO12784	11/10/24	Red & White
3117	WF-O	217	2365	23989	1050	771	1821				7HO16303	7HO14060	11/18/24	Red & White
3131	WF-O	186	2580	24523	960	742	1702				7HO16303	14HO14464	12/3/24	Red & White
3155	WF-O	355	2796	28754	1033	865	1898				14HO15903	14HO14810	1/18/25	Red & White
3163	WF-O	152	2363	25818	1110	819	1929				7HO15440	7HO14060	2/1/25	Red & White

**3015 10 Open Heifers | Born 2-26-25 to 4-27-25 | Medium Flesh, Est Weight 300#-400#**

ID	Pen	291 24116 933 763 1696						Repro	Date	ServSireCode	SireCode	MGSCode	BrthDate	Comment
		pNM\$	Dam	305me	Fat	Pro	CFP							
3173	WF-S	333	2736	26689	1190	942	2132				14HO15903	7HO13716	2/26/25	
3181	WF-S	385	2656	23582	991	773	1764				7HO16083	7HO13598	3/19/25	
3182	WF-S	276	2301	18382	679	612	1291				7HO16083	7HO11725	3/24/25	
3185	WF-S	374	2825	27452	1040	846	1886				7HO15633	14HO14906	4/2/25	
3186	WF-S	271	2863	26075	1055	792	1847				7HO16528	7HO12897	4/15/25	
3188	WF-S	332	2009	30281	1077	890	1967				7HO16083	7HO11708	4/21/25	
3189	WF-S	238	2839	21416	925	649	1574				7HO16528	7HO15094	4/22/25	
3190	WF-S	268	2840	24840	754	713	1467				7HO16528	7HO15094	4/22/25	
3191	WF-S	103	2664	20422	728	695	1423				250HO15939	14HO12604	4/24/25	
3193	WF-S	326	2822	22022	890	714	1604				7HO16528	14HO14906	4/27/25	

**3016 10 Open Heifers | Born 4-19-25 to 5-24-25 | Medium Flesh, Est Weight 275#-325#**

ID	Pen	228 25924 1074 803 1877						Repro	Date	ServSireCode	SireCode	MGSCode	BrthDate	Comment
		pNM\$	Dam	305me	Fat	Pro	CFP							
3187	WF-N	222	2465	33365	1099	927	2026				7HO16114	7HO12418	4/19/25	
3192	WF-N	335	2667	29145	1280	895	2175				7HO16150	7HO13598	4/25/25	
3194	WF-N	204	2682	20311	907	711	1618				7HO16528	7HO13716	4/30/25	
3197	WF-N	247	2848	25414	1107	771	1878				7HO16528	7HO15094	5/7/25	
3200	WF-N	273	1993	26539	1181	890	2071				7HO16150	7HO13140	5/9/25	
3202	WF-N	104	2642	30136	974	837	1811				7HO15825	7HO13826	5/11/25	
3203	WF-N	146	2841	24095	1071	727	1798				250HO15939	7HO12897	5/18/25	
3205	WF-N	71	2082	28054	1072	877	1949				250HO15939	7HO11283	5/21/25	
3207	WF-N	339	2668	21672	989	703	1692				7HO16150	14HO7868	5/24/25	
3208	WF-N	340	2867	20513	1056	695	1751				7HO16405	7HO12897	5/24/25	

**3017 7 Open Heifers | Born 5-19-25 to 6-5-25 | Medium Flesh, Est Weight 225#-250#**

ID	Pen	253 21794 798 648 1446						Repro	Date	ServSireCode	SireCode	MGSCode	BrthDate	Comment
		pNM\$	Dam	305me	Fat	Pro	CFP							
3204	WF-M	94	2425	24508	878	713	1591				7HO15825	7HO14060	5/19/25	
3210	WF-M	379	2843	23560	861	663	1524				7HO16405	7HO15094	5/28/25	
3211	WF-M	114	2394	26152	974	824	1798				250HO15939	7HO12568	5/30/25	
3212	WF-M	293	2842				0				7HO16405	7HO15094	5/30/25	
3213	WF-M	329	2402	25450	911	758	1669				7HO16083	7HO12533	6/3/25	
3214	WF-M	307	2828	25110	862	734	1596				7HO16405	7HO12897	6/3/25	
3215	WF-M	256	2278	27777	1098	843	1941				7HO16179	7HO11617	6/5/25	

**3018 6 Open Heifers | Born 6-9-25 to 6-27-25 | Medium Flesh, Est Weight 200#-250#**

ID	Pen	267 26516 1117 843 1960						Repro	Date	ServSireCode	SireCode	MGSCode	BrthDate	Comment
		pNM\$	Dam	305me	Fat	Pro	CFP							
3216	WF-C	-27	1852	22962	963	779	1742				7HO15636	551HO5808	6/9/25	
3217	WF-C	419	2669	24653	1133	827	1960				14HO15926	14HO12604	6/10/25	
3218	WF-C	364	2738	32143	1277	1026	2303				14HO15831	7HO13741	6/12/25	
3221	WF-C	122	2692	28606	1230	843	2073				7HO15825	7HO12344	6/18/25	Red & White
3222	WF-C	322	2671	25205	1081	801	1882				14HO15831	14HO12604	6/20/25	
3227	WF-C	401	2899	25529	1019	780	1799				7HO16405	250HO15662	6/27/25	

**3019 14 Open Heifers | Born 6-25-25 to 7-13-25 | Medium Flesh, Est Weight 200#-225#**

ID	Pen	344 25808 1018 800 1818						Repro	Date	ServSireCode	SireCode	MGSCode	BrthDate	Comment
		pNM\$	Dam	305me	Fat	Pro	CFP							
3224	D-E	426	2635	30159	1314	948	2262				14HO16222	7HO13716	6/25/25	
3225	D-E	436	2846	22493	888	683	1571				14HO16222	7HO15094	6/25/25	
3226	D-E	467	2397	28476	915	926	1841				14HO16222	7HO13492	6/26/25	
3228	D-E	20	2717	26339	1079	834	1913				7HO15825	14HO14464	7/2/25	
3229	D-E	447	2748	21596	987	700	1687				14HO16222	14HO14906	7/2/25	
3230	D-E	336	2850	26304	1048	732	1780				7HO16405	7HO15365	7/4/25	
3231	D-E	373	2891	24522	1061	786	1847				7HO16405	14HO15491	7/5/25	
3232	D-E	425	2859	27348	1001	815	1816				7HO16405	250HO15662	7/5/25	
3233	D-E	294	2869	23546	874	671	1545				7HO16405	7HO12344	7/6/25	
3234	D-E	395	2834	24247	1014	723	1737				7HO16405	7HO15275	7/9/25	
3235	D-E	302	2111	25574	965	794	1759				7HO16179	7HO11546	7/11/25	
3236	D-E	265	2431	29456	1136	1017	2153				7HO15636	7HO14060	7/11/25	
3237	D-E	357	2857	24967	1012	790	1802				7HO16405	14HO15491	7/11/25	
3238	D-E	266	2291	26291	955	783	1738				7HO16179	7HO11617	7/13/25	

**3020 10 Heifer Calves | Born 7-18-25 to 7-30-25 | Medium Flesh**

ID	Pen	339 24882 1057 798 1855						Repro	Date	ServSireCode	SireCode	MGSCode	BrthDate	Comment
		pNM\$	Dam	305me	Fat	Pro	CFP							
3239	Hutch	340	2902	29591	1178	817	1995				7HO16405	7HO14705	7/18/25	
3241	Hutch	300	2674	25975	1144	870	2014				7HO16179	14HO12604	7/20/25	
3242	Hutch	300	2674	25975	1144	870	2014				7HO16179	14HO12604	7/20/25	
3243	Hutch	323	2904	18784	808	586	1394				7HO16405	7HO12897	7/23/25	
3244	Hutch	394	2887	19845	840	659	1499				14HO16519	14HO14464	7/23/25	
3245	Hutch	485	2734	28507	1135	926	2061				14HO15926	7HO13716	7/24/25	
3246	Hutch	279	2537	26253	1023	790	1813				14HO15926	7HO12784	7/24/25	
3248	Hutch	271	2448	29936	1219	924	2143				7HO17141	7HO14060	7/26/25	
3249	Hutch	374	2294	23500	1046	801	1847				14HO15926	7HO11617	7/27/25	
3250	Hutch	327	2728	20458	1035	735	1770				14HO15831	7HO13716	7/30/25	

**3021 13 Heifer Calves | Born 8-7-25 to 8-29-25 | Medium Flesh**

ID	Pen	305 26754 1089 855 1944						Repro	Date	ServSireCode	SireCode	MGSCode	BrthDate	Comment
		pNM\$	Dam	305me	Fat	Pro	CFP							
3251	Hutch	453	2763	33443	1169	955	2124				14HO15831	250HO14937	8/7/25	
3253	Hutch	186	2911	20595	848	669	1517				250HO15955	7HO12897	8/9/25	
3255	Hutch	133	2720	28220	1060	911	1971				250HO15955	14HO12604	8/11/25	
3256	Hutch	171	1971	26915	1042	783	1825				250HO15955	7HO13140	8/13/25	
3257	Hutch	379	2708	22022	1084	769	1853				7HO16179	7HO13741	8/13/25	
3258	Hutch	247	2336	31565	1119	1001	2120				7HO16179	7HO12823	8/15/25	
3259	Hutch	407	2713	27020	1230	928	2158				7HO16083	7HO13766	8/16/25	
3260	Hutch	287	2314	27285	1060	833	1893				7HO16179	7HO11725	8/20/25	
3261	Hutch	310	2711	28396	1233	936	2169				14HO15831	7HO13766	8/20/25	
3262	Hutch	191	2357	31150	1118	983	2101				7HO15636	7HO13159	8/20/25	Red & White
3263	Hutch	450	2858	22572	1109	668	1777				14HO16519	7HO15139	8/22/25	
3264	Hutch	512	2665	27615	1087	942	2029				14HO15926	14HO7868	8/23/25	
3266	Hutch	241	2709	21007	995	740	1735				14HO15831	7HO13741	8/29/25	

**3022 10 Heifer Calves | Born 9-5-25 to 9-13-25 | Medium Flesh**

ID	Pen	346 27458 1091 876 1967						Repro	Date	ServSireCode	SireCode	MGSCode	BrthDate	Comment
		pNM\$	Dam	305me	Fat	Pro	CFP							
3267	Hutch	369	2381	30476	1296	1035	2331				7HO16179	7HO12533	9/1/25	
3268	Hutch	369	2381	30476	1296	1035	2331				7HO16179	7HO12533	9/1/25	
3269	Hutch	285	2081	27668	953	838	1791				7HO16179	7HO11546	9/1/25	
3270	Hutch	103	2530	21672	736	658	1394				7HO15825	7HO14060	9/2/25	
3271	Hutch	373	2691	27664	1028	898	1926				14HO15926	7HO12945	9/5/25	
3272	Hutch	403	2894	22784	989	569	1558				14HO16519	7HO12897	9/5/25	
3273	Hutch	307	2511	27997	1149	864	2013				7HO16179	7HO12849	9/8/25	
3274	Hutch	356	2725	31373	1259	1015	2274				14HO15831	14HO7868	9/10/25	
3275	Hutch	492	2829	Fresh Heifer			0				14HO15831	14HO14906	9/11/25	
3276	Hutch	401	2606	27016	1116	972	2088				7HO16083	7HO13598	9/13/25	

**3023 12 Heifer Calves | Born 9-15-25 to 9-30-25 | Medium Flesh**

ID	Pen	3023						Repro	Date	ServSireCode	SireCode	MGSCode	BrthDate	Comment
		pNM\$	Dam	305me	Fat	Pro	CFP							
3277	Hutch	162	2563	26061	879	775	1654				7HO16179	7HO12849	9/15/25	
3278	Hutch	300	2662	20526	984	752	1736				7HO16179	14HO14464	9/16/25	
3279	Hutch	413	2683	28796	1215	969	2184				14HO15831	14HO7868	9/17/25	
3280	Hutch	431	2878	Fresh Heifer			0				14HO15831	7HO12897	9/19/25	
3281	Hutch	481	2901	Fresh Heifer			0				14HO15831	7HO14859	9/23/25	
3282	Hutch	359	2759	25830	1078	831	1909				7HO16179	14HO14415	9/26/25	
3283	Hutch	345	2871	Fresh Heifer			0				14HO15831	7HO15365	9/24/25	
3284	Hutch	334	2922	Fresh Heifer			0				14HO15831	14HO14947	9/27/25	
3285	Hutch	354	2897	Fresh Heifer			0				14HO15831	7HO15365	9/28/25	
3286	Hutch	317	2855	Fresh Heifer			0				14HO15831	7HO12897	9/28/25	
3287	Hutch	431	2849	Fresh Heifer			0				14HO15831	7HO15094	9/30/25	
3288	Hutch	416	2854	Fresh Heifer			0				14HO15831	7HO15365	9/30/25	

**3024 10 Heifer Calves | Born 10-2-25 to 10-12-25 | Medium Flesh**

ID	Pen	3024						Repro	Date	ServSireCode	SireCode	MGSCode	BrthDate	Comment
		pNM\$	Dam	305me	Fat	Pro	CFP							
3289	Hutch	303	2570	25358	986	834	1820				7HO16083	7HO12784	10/2/25	
3290	Hutch	254	2780	27070	1120	824	1944				7HO16179	14HO7823	10/2/25	
3291	Hutch	313	2686	21144	892	703	1595				7HO16179	14HO7868	10/4/25	
3292	Hutch	326	2707	25847	1055	901	1956				7HO16179	7HO13741	10/5/25	
3293	Hutch	371	2906	Fresh Heifer			0				14HO15831	7HO12897	10/5/25	
3294	Hutch	339	2395	26463	1099	861	1960				7HO16179	7HO12533	10/5/25	
3295	Hutch	189	1999	19600	810	629	1439				7HO16179	7HO13140	10/5/25	
3296	Hutch	133	1968	24614	896	643	1539				7HO16179	7HO11283	10/7/25	
3298	Hutch	237	2566	25692	1028	918	1946				14HO15831	7HO12784	10/10/25	
3300	Hutch	263	1940	29684	990	829	1819				7HO16179	7HO11525	10/12/25	

**3025 Heifer Calves | Born 10-15-25 to Sale Day**

ID	Pen	3025						Repro	Date	ServSireCode	SireCode	MGSCode	BrthDate	Comment
		pNM\$	Dam	305me	Fat	Pro	CFP							
3301	Hutch		2334	35832	1027	979	2006				7H16179	7HO13159	10/15/25	
3302	Hutch		2762	26726	1035	855	1890				7H15967	250HO14937	10/17	
3303	Hutch		2482	19509	746	622	1368				7H16179	7HO12449	10/18/25	
3304	Hutch		2534	28182	935	857	1792				7H16179	7HO13826	11/1/25	
3305	Hutch		2954	Fresh Heifer							14H16222	7HO15094	10/20/25	

**Individual Heifers**

ID	Pen	pNM\$	Dam	305me	Fat	Pro	CFP	Repro	Date	ServSireCode	SireCode	MGSCode	BrthDate	Comment
3089	BP	301	2511	27997	1149	864	2013				7HO16114	7HO12849	9/21/24	Jersey
3020	BP	-273	1709	16688	843	569	1412	Bred	10/8	7JE1965	7JE5032	7JE1000	5/24/24	Jersey
3219	WF-C	65	2514	23404	1146	857	2003				7BS905	7BS852	6/17/25	Swiss
3220	WF-C	65	2514	23404	1146	857	2003				7BS905	7BS852	6/17/25	Swiss
3254	Hutch	-46	2110	15304	768	522	1290				250JE1947	7JE1151	8/10/25	Jersey