

Sheridan Dairy

ONLINE Milking Herd Dispersal

3-25-26 | www.kreegerdairy.com | Bad Axe, MI

Sheridan Dairy

ONLINE Milking Herd Dispersal



3-25-26 12-1 PM ET

Bid Online or On The Phone

www.kreegerdairy.com

Load Out 3-26-26 @ The Farm

811 McTaggart Rd Bad Axe, MI

There will be a link to click on the auction page to enter the sale site to View The Videos and Information for Each Lot, Register for The Sale, Bid, & or Watch. The Sale opens for bidding at 12PM and begins closing at 1PM, but the site is available to view the videos and information ahead of the sale.

Sale Team

Chad Kreeger	517-294-3484
Paul Warner	517-231-8427
Clay Papoi	517-526-1917
Brian Landis	574-536-5026
Shaun Hyde	989-287-2660
Gabe Papoi	989-444-8275
David Bennett	989-286-7244
Dave Whelen	517-403-7219
Joe Sparrow	270-670-4178

Please contact any member of the sale team to place bids on the phone or with questions on the cattle or the sale process.

Cows are being Bird Flue Tested prior to sale for Interstate Travel

Terms: Payment by Good Check or Wire before loading.

No Buyers Premium | Trucking Available



Gold Star Herd

**LELY Robots, Sand Stalls, Headlocks
Complete Herd Health & Vaccinations
Dry Cows Dry Treated w/ Spectramast
100% AI Sired & Bred - aAa Mated Herd**

Kreeger
and Associates, LLC

Box 42 Cass City, MI 48726
chadkreeger@hotmail.com
517-294-3484

Sheridan Dairy

Eric & Ashly Kennedy

811 McTaggart Rd Bad Axe, MI
989-980-3875 | 810-705-7823

Terms & Conditions

Bidding & Sale Process: The Sale will be conducted in an internet auction format. You can bid online or any member of the sale team can bid for you or have you on the phone during the sale. The Sale begins closing at 12:00 PM, Each Minute one lot closes in lot order. The system does have a bid extension and the lot will close when one minute passes without any increased bids on that lot. The sale will continue to close in order, even if there is overtime bidding on one or multiple lots. When the lot closes the high bid will be the buyer

All Lots sell with 100% Buyer satisfaction

If the buyer does not like the cattle after viewing them prior to loading at the sellers farm, they do not have to take ownership of them, however once they are loaded and leave the sellers farm they are sold on an "As Is" basis with no warranty, expressed or implied and are the property of the buyer. For lots listed as "Sort At Loading" – we will sort any off that need to be, therefore the head count may vary. Lots will sell by the head multiplied by the number of head in each specific lot for the total lot price. If other selling terms are used on a lot it will be listed on that lot description, Example: Selling by the pound multiplied by the total weight of the lot weighed on the truck.

Payment Terms

All cattle must be paid for in full before they are loaded.

Payment must be made in good check or wire transfer to Kreeger and Associates, LLC. The buyer will be invoiced for the full amount. Kreeger and Associates will hold the funds until the cattle are loaded. If any difference after loading the balance will be refunded. All bids are in US funds.

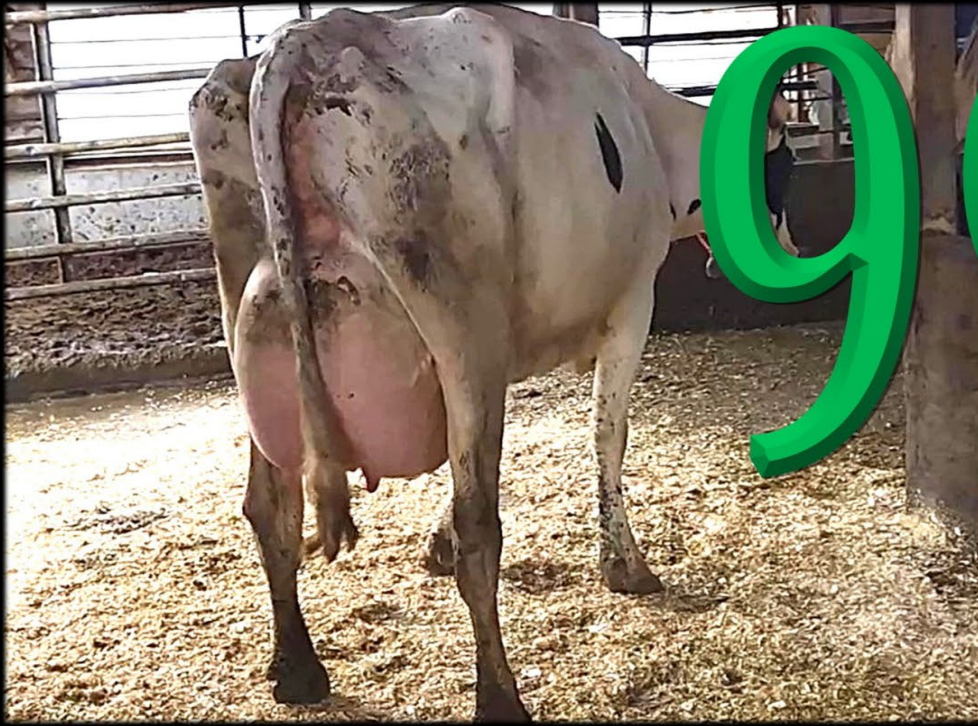
Trucking Details: Kreeger and Associates, LLC will assist with load outs and handle arrangements for the trucks.

Health Warranty: Proper health certificates will be provided when required any additional testing cost will be the responsibility of the buyer. The results of any future health test is not guaranteed. No animal is warranted to be free of Johnes or any other infectious disease. For animals that travel outside of the state of origin the buyer will be responsible for the legal importation of cattle into that state, please check prior to the sale.

Errors: The material printed in this catalog has been carefully edited. If any errors or omissions are discovered, they will be posted a www.kreegerdairy.com and changed in the auction system. Such announcements take precedence over printed material. This information is provided by the owners and DHIA Records and is believed to be correct, however, it is not guaranteed. This sale will be controlled by an auction program. Kreeger and Associates, LLC is not responsible for malfunction or system errors which cause a bid or bidder to fail to be recognized or registered. Some of the animals shown in a lot video may have been moved to a different lot allowing for truck load capacity and reproductive status.

General: It is the intention of the owners and the sale management to represent and present these animals in their present condition, however No adjustments will be made after the animal(s) leave the sellers farm. Females announced as pregnant were found to be pregnant by a licensed veterinarian. No guarantee is made or implied that the pregnancy will go full term. Cattle that are sold with a natural service date are as accurate as possible, although they are not guaranteed to be exact.

Disclaimer: Any person bidding on items in the auction agrees to these terms and conditions and understands that, by bidding, they are entering into a legal binding contract between themselves and the seller(s) and that they will be held financially responsible for their actions. This includes those people representing parties not present at the sale. Neither the owners, auctioneers, sale manager nor other affiliated personnel may be held responsible for any accidents that may occur. Kreeger and Associates, LLC acts only as an agent between buyer and seller and may not be held responsible for any livestock or merchandise. It is to be clearly understood that Kreeger and Associates, LLC and its representatives act only as a medium between buyer and seller, and may not be held liable, financially or otherwise, for any failure in any obligations set forth in this sale.



99#

ECM Avg

Tank Avg 85#m 4.5%f 3.4%P SCC-120(K)

Holsteins Avg 96# & Jerseys 72#

Internet Description Reference Table

Internet Description Score (IDS)
 This is just one persons opinion to help describe each cow. The higher the number the better she is, with 3 being an average good looking & working functional cow.
 (U) Udder 1- 5 | (F) Feet 1- 5 | (L) Legs 1- 5 | (S) Stature 1- 5
 (B) Body Condition 1 Thin - 5 Fat | (W) Weight Estimate
 5 STAR- This is based on there (IDS) and production and reproduction information.
 A Five Star best combines it all! 4 STAR- Almost a 5, but not quite!

5★ 5 Star
4★ 4 Star

5★ Udder 5 Star Udder
4★ Udder 4 Star Udder

1st 1st Lact
2nd 2nd Lact

Dry Dry
FR Fresh

★ Gold Star Herd
★G Gold Star Grower
REP G Reputation Grower
🧬 Genetic Focused
Legendary Legendary Herd

Operational Designations
 Gold Star- Well Managed Highly Productive Operation, Checks All The Boxes
 Reputation- Goldstar Grower, But Doesn't Breed AI
 Genetic Focused- Genomic Tested or Prioritizes Genetics In The Day To Day Operations
 Legendary- Herds that we have worked with for generations

B TEAM B Team - Blemish or Issue
Read Comments Flag - Blemish Groups Read Comments
Always Read Comments

Color Codes
 B Team - Blemish or Issue
 Flag - Blemish Groups Read Comments
 Green- Good To Go
 Yellow- Slight Blemish, usually not a big issue
 Red- Blemish , Red Comments

5★ Udder Avg 5 Star Avg
4★ Udder Avg 4 Star Avg
1st 1st Lact
2nd 2nd Lact

FR Fresh
PG Preg
O Open
SERV Serviced

HerringBone Herringbone
Para Parallel
🤖 Robotic
Ro Rotary

Flat Flat Barn
3X Milked 3X
2X Milked 2X
COMBO L Mixed Lact

Individual

PG Pregnant
S/O Service/Open
Slight WRT Wide Rear Teat
Slight WFT Wide Front Teat
Slight IMB Imbalanced
Slight RT Reverse Tilt
COMBO R Mixed Repro
D² Dairy Direct
EXP Exposed To Bull
AI Bred AI Bred
♀ Bred Sexed
B\$ Bred Beef

100# 100# Milk
SERV Serviced
Slight LLR Light Left Rear
Slight LLF Light Left Front
Slight LRF Light Right Front
Slight LRR Light Right Rear
CVH Complete Vac
V Vaccinated
Sell By The Pound
AI Sired AI Sired
G NMS Genomic NMS
P NMS Parent NMS

Slight NFT Needs Feet
Slight Limp Limp
Slight SCC Somatic Cell Count
LRR Light Right Rear
LLR Light Left Rear
LLF Light Left Front
LRF Light Right Front
WRT Wide Rear Teat
WFT Wide Front Teat
RT Reverse Tilt
WT Wide Teats
IMB Imbalanced

3/4 3 Quartered
3/4 LR 3/4 Left Rear
3/4 LF 3/4 Left Front
3/4 RR 3/4 Right Rear
3/4 RF 3/4 Right Front
DU Deep Udder
NFT Needs Feet Trim
Walk Abnormal Walk
Limp Walks With Limp
Lame Lame on a foot
Horn Horns
SCC High SCC

Group

2 8 Fresh 1st Lact Heifers | Fresh 1-5 to 2-9

ID	Avg				Repro	Service Sire	Sire	IDS Avg						Comment	
	Fresh	Milk	Peak	Lact				MGS	U	F	L	S	B		W
642	1/28/26	98		1			7HO15640	7HO13334	5	4	4	3	3	14	4★ Udder, Horn Stub
645	1/16/26	97		1			7HO15471	7HO13334	4	4	3	3	2	14	4★ Udder
655	2/9/26	80		1			200HO11783	7HO12837	5	4	4	3	3	14	5★ Udder
656	1/5/26	114		1	Bred	3/8	200HO13344	200HO11783	4	4	4	3	3	14	4★ Udder
658	1/5/26	103		1			7HO15721	7HO12256	5	4	4	3	2	14	5★ Udder
660	1/18/26	95		1			7HO15721	250HO14134	4	4	4	4	2	13	4★ Udder
668	1/30/26	81		1			200HO7955	7HO11621	4	3	4	3	3	15	4★ Udder
669	1/19/26	100		1			14HO15932	7HO12198	3	3	4	3	2	13	

3 6 Fresh 1st Lact Heifers | Fresh 2-20 to 3-3

ID	Avg				Repro	Service Sire	Sire	IDS Avg						Comment	
	Fresh	Milk	Peak	Lact				MGS	U	F	L	S	B		W
632	3/3/26			1			14HO15369	7HO15440	4	4	3	3	2	13	4★ Udder
648	2/22/26			1			7HO15471	7HO15094	5	4	4	3	2	14	5★ Udder
652	2/21/26			1			14HO16102	7HO12228	4	4	4	4	2	15	4★ Udder
653	2/20/26			1			14HO16102	7HO12943	4	3	3	3	2	11	4★ Udder
664	3/13/26			1			7HO16520	250HO15235							
685	3/12/26			1			200HO11783	7HO14964							

4 5 Preg 1st Lact Heifers | Due 8-2 to 10-4

ID	Avg				Repro	Service Sire	Sire	IDS Avg						Comment		
	Fresh	Milk	Peak	Lact				MGS	U	F	L	S	B		W	
573	7/7/25	68	84	1	Due	9/26	200HO13305	200HO7962	7HO14771	4	4	4	4	3	16	4★ Udder
574	8/13/25	66	69	1	Due	8/28	200HO13305	200HO11945	7HO13334	4	3	4	4	4	17	4★ Udder
582	8/24/25	74	78	1	Due	8/8	200HO13344	200HO1945	200JE415	4	3	4	4	3	16	4★ Udder
599	10/5/25	83	87	1	Due	10/4	200HO12700	200HO12340	250HO14605	4	4	3	3	2	14	4★ Udder
606	8/6/25	59	66	1	Due	8/2	200HO12363	7HO15640		3	4	4	3	3	15	

5 5 Preg 1st Lact Heifers | Due 6-1 to 7-19

ID	Avg				Repro	Service Sire	Sire	IDS Avg						Comment		
	Fresh	Milk	Peak	Lact				MGS	U	F	L	S	B		W	
512	1/29/25	67	77	1	Due	6/23	250HO16492	7HO15487	7HO12432	4	3	3	4	4	18	4★ Udder
536	4/22/25	66	81	1	Due	6/1	200HO13321	151HO3826	7HO13826	4	4	4	3	3	14	4★ Udder
569	6/15/25	89	101	1	Due	7/19	200HO12813	200HO7962	7HO14771	4	3	3	3	3	14	4★ Udder
570	7/13/25	83	99	1	Due	6/29	200HO13305	200HO7962	507HO8477	4	4	3	3	3	15	4★ Udder
593	7/16/25	88	93	1	Due	7/6	200HO13305	200HO11783	507HO12569	5	3	4	4	3	15	5★ Udder

6 4 1st Lact Heifers | Fresh 10-27 to 12-7

ID	Avg				Repro	Service Sire	Sire	IDS Avg						Comment		
	Fresh	Milk	Peak	Lact				MGS	U	F	L	S	B		W	
594	11/10/25	79	95	1				14HO16102	7HO12779	4	3	4	4	3	16	4★ Udder
631	10/27/25	78	78	1	Bred	2/22	200HO13305	200HO11945	7HO13324	4	4	4	3	3	14	4★ Udder
637	12/7/25	99	99	1	Bred	2/1	200HO13305	14HO15369	7HO12344	4	4	4	3	2	13	4★ Udder
643	11/28/25	91	91	1	Bred	2/12	200HO13305	14HO15223	7HO12837	5	4	3	3	3	14	5★ Udder

7 3 1st Lact Heifers | Fresh 8-21 to 9-26

ID	Avg				Repro	Service Sire	Sire	IDS Avg						Comment		
	Fresh	Milk	Peak	Lact				MGS	U	F	L	S	B		W	
572	9/26/25	93	99	1	Bred	1/30	200HO13305	200HO7962	7HO13334	4	2	4	4	4	19	4★ Udder
581	8/21/25	81	86	1				14HO16102		4	4	3	3	2	14	4★ Udder
597	9/20/25	97	105	1	Bred	2/13	200HO13305			4	4	3	3	3	15	4★ Udder

8 CLOSE UP GROUP | 6 Dry 1st Lact Heifers | Due 3-19 to 4-1 | Some May Be Fresh

ID	Avg				Repro	Service Sire	Sire	IDS Avg						Comment		
	Fresh	Milk	Peak	Lact				MGS	U	F	L	S	B		W	
538	Dry			1	Due	3/30	200HO12699	7HO15961	507HO12569	4	3	3	4	3	15	4★ Udder
541	Dry			1	Due	3/24	94HO21071	200HO11751	250HO14605	4	4	3	4	3	17	4★ Udder
546	Dry			1	Due	3/19	94HO21071	200HO11751	7HO11621	3	3	4	4	3	16	
552	Dry			1	Due	3/17	94HO21071	200HO11783	7HO12026	3	3	4	4	3	16	
554	Dry			1	Due	3/31	200HO12699	200HO7955	7HO12659	4	3	4	4	3	16	4★ Udder
564	Dry			1	Due	4/1	200HO12699		7HO13862	4	3	4	3	3	15	

9 3 Dry 1st Lact Heifers | Due 4-7 to 4-12

ID	Avg				Repro	Service Sire	Sire	IDS Avg						Comment		
	Fresh	Milk	Peak	Lact				MGS	U	F	L	S	B		W	
515	Dry			1	Due	4/7	200HO12699	151HO3442	7HO11983	4	3	3	4	3	16	4★Udder
556	Dry			1	Due	4/12	200HO12090	200HO7955	7HO14160	4	4	4	4	3	16	4★Udder
561	Dry			1	Due	4/12	200HO12090	200HO7955	7HO12837	4	3	3	4	3	16	4★Udder
567	Dry			1	Due	5/22	200HO13321	200HO7962	507HO12569	3	2	3	3	3	16	

10 CLOSE UP GROUP | 4 Preg Heifers | Due 3-14 to 3-27 | Some May Be Fresh

ID	Avg				Repro	Service Sire	Sire	IDS Avg						Comment		
	Fresh	Milk	Peak	Lact				MGS	U	F	L	S	B		W	
662	Preg Hfr				Due	3/27	200HO12090	200HO7962	7HO14160						14	
678	Preg Hfr				Due	3/14	94HO21071	200HO12276	7HO12256						14	
679	Preg Hfr				Due	3/27	200HO12784	200HO11783	7HO12837						14	
686	Preg Hfr				Due	3/21	94HO21071	14HO15932	7HO15471						14	

11 5 Preg Heifers | Due 4-5 to 4-17

ID	Avg				Repro	Service Sire	Sire	IDS Avg						Comment		
	Fresh	Milk	Peak	Lact				MGS	U	F	L	S	B		W	
649	Preg Hfr			269	Due	4/5	200HO12699	7HO15471	507HO12228						14	
672	Preg Hfr			265	Due	4/9	200HO12699	200HO11783	7HO12026						14	
683	Preg Hfr			263	Due	4/11	200HO12699	14HO15932	250HO14134						14	
689	Preg Hfr			257	Due	4/17	551HO4610	7HO16520	250HO12975						13	
692	Preg Hfr			262	Due	4/12	200HO12699	7HO16520	7HO14160						13	

12 8 Preg Heifers | Due 5-11 to 7-19

ID	Avg				Repro	Service Sire	Sire	IDS Avg						Comment		
	Fresh	Milk	Peak	Lact				MGS	U	F	L	S	B		W	
688	Preg Hfr			201	Due	6/12	200HO13321	551HO4461	250HO14134						12	
694	Preg Hfr			210	Due	6/3	200HO13321	7HO16287	250HO14605						14	
697	Preg Hfr			199	Due	6/14	200HO12813	14HO15932	250HO15235						14	
701	Preg Hfr			177	Due	7/6	200HO13305	7HO16520	7HO12659						13	
704	Preg Hfr			233	Due	5/11	200HO13321	200HO12363	7HO12421						13	
706	Preg Hfr			222	Due	5/22	200HO13321	200HO11016	250HO15235						13	
708	Preg Hfr			208	Due	6/5	200HO13007	200HO11016	7HO12026						13	
721	Preg Hfr			164	Due	7/19	200HO12813	551HO4247	14HO14964						13	

13 2 Preg Heifers | Due 4-24 to 5-8 | 🚩

ID	Avg				Repro	Service Sire	Sire	IDS Avg						Comment		
	Fresh	Milk	Peak	Lact				MGS	U	F	L	S	B		W	
691	Preg Hfr			250	Due	4/24	200HO12813	551HO4461	7HO15471						14	Strait Leg
709	Preg Hfr			236	Due	5/8	14HO16391	200HO11016	507HO13740						13	Strait Leg

14 5 1st Lact Heifers | 2 Preg (Due 8-8 to 9-1), 3 Serv/RTB (Fresh 10-23 to 11-19) | 🚩

ID	Avg				Repro	Service Sire	Sire	IDS Avg						Comment		
	Fresh	Milk	Peak	Lact				MGS	U	F	L	S	B		W	
583	8/17/25	74	91	1	Due	8/8	200HO13344	200HO11945	250HO14605	5	4	3	3	3	18	ABCESS-JAW
600	11/2/25	77	91	1	Bred	3/10	29HO20743	200HO12340	250HO12975	4	3	2	4	2	14	Strait Leg
604	9/7/25	99	102	1	Due	9/1	200HO13305	7HO15640	7HO13253	4	4	3	3	2	15	SW-HOCK
611	11/19/25	92	94	1	Bred	2/25	200HO13305	200JE1258	151HO3239	5	4	3	3	3	15	Strait Leg
618	10/23/25	94	95	1				7HO15640	7HO12837	4	3	2	4	3	16	SW-LR HOCK

15 7 Fresh 2nd Lact Cows | Fresh 1-18 to 3-5

ID	Avg				Repro	Service Sire	Sire	IDS Avg						Comment		
	Fresh	Milk	Peak	Lact				MGS	U	F	L	S	B		W	
516	1/22/26	109		2				7HO15472		5	4	4	3	3	15	Horn
517	2/19/26	92		2				7HO15487	250HO12975	4	4	4	4	3	15	4★Udder
519	1/18/26	106		2				7HO15487	7HO12837	4	4	4	3	2	13	4★Udder
521	2/4/26	122		2				151HO4395	507HO13740	4	4	4	3	2	14	4★Udder
525	1/28/26	119		2				151HO4395	7HO13296	4	4	4	3	2	13	4★Udder
529	1/25/26	135		2				14HO15779	250HO14605	3	3	3	3	2	14	
532	3/5/26			2				14HO15779	507HO12569	4	3	4	3	3	16	4★Udder

16 5 Serviced 2nd Lact Cows | Fresh 11-7 to 12-26

ID	Avg				Repro	Service Sire	Sire	IDS Avg						Comment		
	Fresh	Milk	Peak	Lact				MGS	U	F	L	S	B		W	
455	12/26/25	137	137	2	Bred	3/4	200HO12700	7HO15094	7HO12026	4	4	4	4	2	15	4★ Udder
467	12/6/25	106	118	2	Bred	3/6	200HO13344	7HO15173	7HO14160	3	3	3	3	3	15	
489	12/18/25	133	133	2	Bred	2/20	200H13305	14HO15179	7HO12569	4	4	4	4	2	15	4★ Udder
496	11/7/25	98	126	2	Bred	3/5	200HO12700	7HO15472	7HO12943	3	3	3	3	3	14	
514	12/23/25	95	95	2	Bred	2/27	200HO12700	7HO15173	7HO12256	4	3	4	4	2	14	4★ Udder

17 8 Preg 2nd Lact Cows | Due 6-27 to 12-16

ID	Avg				Repro	Service Sire	Sire	IDS Avg						Comment		
	Fresh	Milk	Peak	Lact				MGS	U	F	L	S	B		W	
342	2/5/25	96	141	2	Due	7/13	200HO12813	7HO13334	7HO12026	4	4	3	3	3	15	4★ Udder
385	7/22/25	81	98	2	Due	####	200HO13305	250HO14134	200JE986	4	4	4	3	3	13	4★ Udder
414	4/18/05	67	117	2	Due	6/27	200HO13305	14HO14964	224HO5045	4	3	4	3	3	17	4★ Udder
417	5/18/25	69	115	2	Due	7/7	200HO13305	151HO3430	529HO14018	4	3	3	3	3	14	4★ Udder
427	6/3/25	76	119	2	Due	6/30	200HO13305	14HO14964	7HO12326	4	4	3	3	3	16	4★ Udder
456	6/29/25	61	115	2	Due	7/29	200HO12141	7HO15094	7HO14160	4	4	4	3	3	16	4★ Udder
479	8/18/25	81	100	2	Due	8/4	200HO12363	250HO15235	7HO13607	4	3	4	4	3	17	4★ Udder
482	9/21/25	129	149	2	Due	####	200HO13344	7HO15173	7HO11621	3	3	3	4	3	15	

18 5 2nd Lact Cows | 3 Preg (Due 8-21 to 9-18), 2 Serviced (Fresh 8-29 to 11-26) | 🚩

ID	Avg				Repro	Service Sire	Sire	IDS Avg						Comment		
	Fresh	Milk	Peak	Lact				MGS	U	F	L	S	B		W	
412	6/4/25	48	107	2	Due	8/21	200HO12699	250HO15235	7HO12256	4	3	4	4	3	17	4★ Udder
444	9/17/25	114	114	2	Due	9/18	200HO13344	250HO14134	507HO13035	4	3	3	3	2	16	Strait Leg
465	8/29/25	68	78	2	Bred	3/14	29HO20743	7HO15173	7HO12256	4	3	4	3	3	14	NFT
473	10/4/25	98	109	2	Due	9/12	200HO12699	14HO15179	7JE1699	4	4	3	3	3	16	Strait Leg
493	11/26/25	106	131	2	Bred	3/9	29HO20743	14HO14464	7HO12344	3	3	3	4	2	15	Strait Leg

19 3 Dry 2nd Lact Cows | Due 4-6 to 4-21

ID	Avg				Repro	Service Sire	Sire	IDS Avg						Comment		
	Fresh	Milk	Peak	Lact				MGS	U	F	L	S	B		W	
358	Dry			2	Due	4/6	200HO12699	151HO3239	7HO12943	3	3	3	4	4	18	
435	Dry			2	Due	4/16	200HO12090	7HO14964	7HO12326	3	4	4	3	3	16	
436	Dry			2	Due	4/21	200HO12813	151HO3430	7HO12779	4	4	3	4	3	15	4★ Udder

20 4 Dry 2nd+ Lact Cows | Due 5-20 to 6-10

ID	Avg				Repro	Service Sire	Sire	IDS Avg						Comment		
	Fresh	Milk	Peak	Lact				MGS	U	F	L	S	B		W	
124	Dry			4	Due	6/7	200HO13007	7HO12837	7HO12569	3	3	3	4	3	17	
136	Dry			4	Due	5/20	200HO13321	7HO13296	7HO12569	3	3	4	4	3	16	
365	Dry			2	Due	6/10	200HO13321	7HO12837	7HO12256	3	4	3	4	3	18	
462	Dry			2	Due	6/10	200HO13321	7HO15471	7HO14160	3	3	3	3	3	16	

21 4 Fresh 3rd Lact Cows | Fresh 12-30 to 2-3

ID	Avg				Repro	Service Sire	Sire	IDS Avg						Comment		
	Fresh	Milk	Peak	Lact				MGS	U	F	L	S	B		W	
367	1/18/26	131	131	3				7HO15440	7HO12954	4	4	4	3	2	15	4★ Udder
372	1/24/26	134	134	3				250HO14134	7JE1000	4	4	3	3	3	16	4★ Udder
389	12/30/25	142	142	3	Bred	3/7	200HO13344	250HO14134	507HO12569	4	4	4	3	3	15	4★ Udder
397	2/3/26	157	157	3				250HO15235	7HO13832	5	4	4	4	2	15	5★ Udder

22 3 Serviced 3rd Lact Cows | Fresh 11-19 to 12-6

ID	Avg				Repro	Service Sire	Sire	IDS Avg						Comment		
	Fresh	Milk	Peak	Lact				MGS	U	F	L	S	B		W	
341	11/19/25	134	147	3	Bred	3/9	29HO20743	7HO13253	7HO12432	4	4	4	3	2	13	4★ Udder
352	11/26/25	138	145	3	Bred	3/6	200HO13344	250HO14605	7HO12026	4	4	4	3	3	15	4★ Udder
363	12/6/25	97	123	3	Bred	2/19	200HO13305	7HO15440	200HO5337	3	3	3	3	2	14	

23 5 Preg 3rd Lact Cows | Due 6-30 to 8-21

ID	Avg				Repro	Service Sire	Sire	IDS Avg						Comment		
	Fresh	Milk	Peak	Lact				MGS	U	F	L	S	B		W	
141	8/2/25	90	108	3	Due	6/9	200HO13321	151HO3431	7HO8477	3	3	4	3	3	16	
222	4/13/25	54	132	3	Due	7/18	200HO12813	7HO12837	507HO12228	3	4	3	3	3	17	
242	6/5/25	78	125	3	Due	8/11	200HO13344	7HO13826	507HO12569	4	3	4	4	3	17	4★ Udder
287	7/5/25	93	145	3	Due	8/21	200HO12699	7HO13334	7HO12818	4	3	4	3	3	15	4★ Udder
306	7/9/25	68	93	3	Due	6/30	200HO13305	14HO7796	7HO11169	3	3	4	3	3	15	

24 7 Preg 3rd+ Lact Cows | Due 7-5 to 11-4 | 🚩

ID	Avg				Repro	Service Sire	Sire	IDS Avg							Comment	
	Fresh	Milk	Peak	Lact				MGS	U	F	L	S	B	W		
82	8/21/25	92	143	5	Due	11/4	200HO13305	7HO12818	507HO12569	4	4	3	4	3	18	4★ Udder
133	5/29/25	91	130	4	Due	7/5	200HO13305	7HO12421	507HO12602	3	3	3	3	2	15	ROOT BAG
211	3/12/25	108	165	3	Due	8/12	200HO13305	7HO14160	507HO12569	3	4	4	4	3	17	LLR
2359	9/18/25	106	107	7	Due	9/7	200HO13344	507HO12569	507HO8477	3	3	3	4	2	16	DU
2725	9/5/25	82	98	5	Due	8/22	200HO12699	7HO12228	507HO12602	3	3	3	4	2	17	LLI
2735	9/20/25	105	117	5	Due	#####	200HO12700	7HO12943	7HO11207	2	3	3	4	3	17	DU
2739	8/5/25	110	123	5	Due	8/6	200HO13321	7HO12026	507HO10999	3	3	3	4	3	17	IMB-L

26 5 Preg 4th Lact Cows | Due 7-5 to 11-4

ID	Avg				Repro	Service Sire	Sire	IDS Avg							Comment	
	Fresh	Milk	Peak	Lact				MGS	U	F	L	S	B	W		
148	6/17/25	93	132	4	Due	9/30	200HO12699	7HO12256	507HO12569	3	3	4	4	3	16	
167	5/4/25	96	152	4	Due	9/15	200HO12699	7HO14160	7HO12026	3	4	4	4	4	16	
188	8/25/25	118	140	4	Due	#####	200HO13305	7HO13334	507HO12569	3	3	4	3	3	17	
191	8/21/25	100	129	4	Due	8/28	200HO13305	7HO14160	7HO9989	4	3	4	4	3	15	4★ Udder
207	11/16/25	148	155	4	Due	11/7	200HO13305	7HO13334	7HO13324	3	3	3	4	2	14	

27 CLOSE UP GROUP | 3 Dry 3rd+ Lact Cows | Due 3-16 to 3-27 | Some May Be Fresh

ID	Avg				Repro	Service Sire	Sire	IDS Avg							Comment	
	Fresh	Milk	Peak	Lact				MGS	U	F	L	S	B	W		
138	Dry			4	Due	3/16	94HO21071	7HO12421	507HO12569							
187	Dry			3	Due	3/27	200HO12090	7HO12837	507HO10999	4	4	4	4	3	18	4★ Udder
283	Dry			3	Due	3/23	94HO21071	250HO14605	507HO8477	4	3	4	4	3	16	4★ Udder

28 3 Dry 4th+ Lact Cows | Due 4-2 to 5-8

ID	Avg				Repro	Service Sire	Sire	IDS Avg							Comment	
	Fresh	Milk	Peak	Lact				MGS	U	F	L	S	B	W		
9	Dry			5	Due	4/2	200HO12699	250HO12975	507HO12569	4	3	4	4	3	18	4★ Udder
68	Dry			4	Due	4/25	200HO12813	7HO13607	7HO12432	3	3	3	4	3	17	
122	Dry			4	Due	5/8	200HO12813	7HO12256	507HO10429							

29 Milk Wagon Group | 7 Fresh 4th+ Lact Cows | Fresh 2-2 to 11-18

ID	Avg				Repro	Service Sire	Sire	IDS Avg							Comment	
	Fresh	Milk	Peak	Lact				MGS	U	F	L	S	B	W		
10	1/2/26	132	132	5	Bred	3/7	200HO13344	250HO12975	507HO12569	4	3	4	4	3	17	4★ Udder
34	11/10/25	148	160	5	Bred	2/28	200HO12700	507HO13607	7HO12569	3	4	3	3	3	16	
74	12/2/25	147	150	5						4	3	4	4	3	17	Capt Hip
116	11/18/25	154	159	4				7HO12421	507HO12569	3	3	3	3	3	16	
237	12/28/25	125	125	4				7HO13253	7HO11383	3	4	3	4	2	15	
2680	1/25/26	123	123	6				7HO13035	11HO11419	3	3	4	3	2	14	
2696	1/5/26	123	130	6				7HO12943	7HO12105	3	3	3	4	2	15	

30 Milk Wagon Group | 8 Fresh 2nd+ Lact Cows | Fresh 2-23 to 11-2 | 🚩

ID	Avg				Repro	Service Sire	Sire	IDS Avg							Comment	
	Fresh	Milk	Peak	Lact				MGS	U	F	L	S	B	W		
80	12/24/25	140	140	4				7HO12256	7HO12346	3	4	2	3	2	15	Strt Leg,RR Imb
84	12/8/25	122	128	5	Bred	2/26	200HO13305	7HO12256	507HO12569	4	3	2	4	3	16	Strait Leg
85	11/2/25	125	130	4	Bred	2/28	200HO12700	7HO12421	7HO12432	3	3	3	3	2	15	DU
219	2/23/26	110	110	4				7HO13334	7HO12026	3	3	3	4	2	16	DU
324	12/5/25	145	145	3				7HO13296	507HO8477	2	3	2	3	3	16	DU
383	12/30/25	121	129	3	Bred	3/15	29HO20743	7HO13334	7HO12026	3	3	2	3	3	14	Strait Leg
511	1/3/26	90	107	2	Bred	3/10	29HO20743	7HO15472	7HO13253	2	3	3	3	2	15	
2289	12/6/25	146	151	7				7HO12569	7HO9420	3	3	4	4	2	16	DU

31 3/4 GROUP | 7 1st+ Lact Cows | 5 Preg (Due 7-26 to 10-30), 1 (Fresh 12-7) | 🚩

ID	Avg				Repro	Service Sire	Sire	IDS Avg							Comment	
	Fresh	Milk	Peak	Lact				MGS	U	F	L	S	B	W		
328	8/22/25	106	127	3	Due	8/26	200HO12699	250HO14605	7HO13035	2	4	4	4	3	16	3/4-LR, LIMP-FR
426	5/7/25	70	114	2	Due	9/23	200HO13305	250HO14134	7HO13832	2	3	3	3	2	14	3/4-RF
469	8/28/25	102	125	2	Due	#####	200HO12700	7HO15173	507HO9222	2	3	4	3	3	17	3/4-RR
592	8/19/25	73	82	1	Due	7/26	200HO12141	200HO12340	7HO12837	2	3	3	4	2	14	3/4-LR
608	8/11/25	70	83	1	Due	9/2	200HO13305	7HO15640	7HO14160	2						3/4-LR
638	12/7/25	84	84	1			200HO13344	14HO15223	7HO12026	2	4	4	3	2	15	3/4-RR
2726	2/2/26	116	116	6				7HO12943	507HO10429	4	3	4	4	3	18	4★ Udder

33 3/4 GROUP | 4 Dry 1st+ Lact Cows | Due 5-20 to 5-30 | 🚩

ID	Avg				Repro	Service Sire	Sire	IDS Avg							Comment	
	Fresh	Milk	Peak	Lact				MGS	U	F	L	S	B	W		
438	Dry			2	Due	5/20	200HO13321	250HO15235	7HO12615	2	3	3	3	3	14	Xbred, ImB
486	Dry			1	Due	5/21	200HO13321	7HO15173	7HO12837	2	3	3	4	3	18	3/4-RF, SL
526	Dry			1	Due	5/30	200HO13321	151HO4395	7HO12436	2	4	4	3	4	16	3/4-LR

40 3 Fresh 1st Lact Heifers | Fresh 2-6 to 3-13 | JERSEY

ID	Avg				Repro	Service Sire	Sire	IDS Avg							Comment	
	Fresh	Milk	Peak	Lact				MGS	U	F	L	S	B	W		
634	2/6/26	40	40	1				200JE10001	14JE652	4	4	4	4	3	11	HORN-Left Side
644	3/8/26			1				200JE10001	7HO13334	4	4	4	3	2	9	4★Udder
667	3/13			1				200JE1248	14JE648							

41 3 Preg 1st Lact Heifers | Due 8-13 to 11-10 | JERSEY

ID	Avg				Repro	Service Sire	Sire	IDS Avg							Comment	
	Fresh	Milk	Peak	Lact				MGS	U	F	L	S	B	W		
601	8/22/25	53	61	1	Due	8/13	200JE1575	14JE2002	7JE1528	5	4	4	3	3	9	5★Udder
622	11/3/25	56	56	1	Due	####	200JE1414	200JE1258	14JE1776	3	3	3	3	3	11	
627	11/9/25	61	63	1	Due	####	200JE1577	HB	7JE1529	4	4	4	3	3	10	4★Udder

42 2 Serviced 1st Lact Heifers | Fresh 10-28 to 11-16 | JERSEY

ID	Avg				Repro	Service Sire	Sire	IDS Avg							Comment	
	Fresh	Milk	Peak	Lact				MGS	U	F	L	S	B	W		
615	10/28/25	68	68	1	Bred	2/25	200JE1414	7JE1928	7JE1242	4	3	4	3	3	12	4★Udder
630	11/16/25	70	74	1	Bred	3/11	200J1404	HB	7JE1528	4	4	4	3	2	9	4★Udder

43 3 Dry 1st Lact Cows | Due 4-29 to 5-17 | JERSEY

ID	Avg				Repro	Service Sire	Sire	IDS Avg							Comment	
	Fresh	Milk	Peak	Lact				MGS	U	F	L	S	B	W		
510	Dry			1	Due	5/17	200JE1414	14JE1936	7JE1699	3	3	4	3	3	10	
522	Dry			1	Due	4/29	200JE1404	551JE1796	14JE648	3	3	3	4	3	14	
527	Dry			1	Due	5/4	200JE1404	29JE3542	7JE1699							

44A 3 Preg Heifers | Due 4-25 to 5-29 | JERSEY

ID	Avg				Repro	Service Sire	Sire	IDS Avg							Comment	
	Fresh	Milk	Peak	Lact				MGS	U	F	L	S	B	W		
671	Preg Hfr			249	Due	4/25	200JE1345	14JE1969	7JE1471						10	
693	Preg Hfr			233	Due	5/11	200JE1404	7JE2022	551JE1766						9	
719	Preg Hfr			215	Due	5/29	200JE1455	551JE1861	7JE1699						12	

44B 3 JERSEYX Preg Heifers | Due 4-13 to 5-28

ID	Avg				Repro	Service Sire	Sire	IDS Avg							Comment	
	Fresh	Milk	Peak	Lact				MGS	U	F	L	S	B	W		
681	Preg Hfr			261	Due	4/13	200HO12090	200HO12276	7XX2						13	
707	Preg Hfr			216	Due	5/28	200HO13007	200JE1414	7JE1699						12	

45 7 Preg Heifers | Due 6-20 to 7-31 | JERSEY

ID	Avg				Repro	Service Sire	Sire	IDS Avg							Comment	
	Fresh	Milk	Peak	Lact				MGS	U	F	L	S	B	W		
702	Preg Hfr			177	Due	7/6	200JE1404	551JE1861	250JE1834						11	
710	Preg Hfr			193	Due	6/20	200JE1404	7JE2022	14JE742						10	
712	Preg Hfr			158	Due	7/25	200JE1345	200JE1310	614JE652						9	
715	Preg Hfr			159	Due	7/24	200JE1345	551JE1861	7JE1814						9	
723	Preg Hfr			177	Due	7/6	200JE1404	551JE1861	7JE1699						10	
732	Preg Hfr			153	Due	7/30	200JE1345	200JE1414	7JE1699						11	
734	Preg Hfr			152	Due	7/31	200JE1345	200JE1414	14JE673						10	

46 5 Fresh 2nd Lact Cows | Fresh 1-7 to 2-5 | JERSEY

ID	Avg				Repro	Service Sire	Sire	IDS Avg							Comment	
	Fresh	Milk	Peak	Lact				MGS	U	F	L	S	B	W		
501	1/25/26	86	86	2				7JE1904	7JE1528	4	3	4	3	2	10	4★Udder
504	1/18/26	100	100	2				7JE1874	7JE5011	4	3	4	3	2	9	4★Udder
507	2/5/26	89	89	2				7JE1904	7JE1528	4	4	4	3	2	10	4★Udder
508	1/7/26	92	92	2	Bred	3/10	29HO20743	250JE1834	7JE1699	4	4	4	3	3	11	4★Udder
531	2/5/26	102	102	2				551JE1717	7JE1344	4	3	3	3	2	10	

47 3 Serviced 2nd Lact Cows Fresh 11-16 to 12-10 JERSEY																
Avg 81 84 2					IDS Avg 4 4 4 3 3 10											
ID	Fresh	Milk	Peak	Lact	Repro	Service Sire	Sire	MGS	U	F	L	S	B	W	Comment	
478	12/10/25	79	81	2	Bred	2/15	200JE1425	7JE1904	507JE1447	4	3	4	3	2	10	4★Udder
490	12/5/25	96	96	2	Bred	3/11	7JE1758	7JE1822	507JE1294	4	4	4	3	3	11	4★Udder
491	11/16/25	68	75	2	Bred	3/13	200JE1425			4	4	4	3	3	9	4★Udder
48 3 Fresh 3rd Lact Cows Fresh 12-18 to 3-4 JERSEY																
Avg 83 0 3					IDS Avg 3 3 3 3 3 10											
ID	Fresh	Milk	Peak	Lact	Repro	Service Sire	Sire	MGS	U	F	L	S	B	W	Comment	
348	1/25/26	101		3						3	4	3	3	3	10	
384	3/4/26	63		3			551JE1765	507JE1471								
586	12/18/25	83		3			14JE2002	7JE1699		4	3	4	3	3	11	
49 CLOSE UP GROUP 2 Dry Cows (1 1st & 1 2nd Lact) & 1 Springer Due 3-21 to 4-6 Some May Be Fresh JERSEY																
Avg 1					IDS Avg 4 4 4 3 3 12											
ID	Fresh	Milk	Peak	Lact	Repro	Service Sire	Sire	MGS	U	F	L	S	B	W	Comment	
378	Dry			2	Due	3/21	7JE1170	7JE1822	7JE1294	4	4	4	3	3	13	
553	Dry			1	Due	4/6	200JE1404	200JE10061	7JE1344	3	3	4	3	3	12	
666	Preg Hfr				Due	3/22	7JE1170	200JE1248	7JE1529						12	
50 4 2nd Lact Dry Cows Due 4-16 to 5-7 JERSEY																
Avg 2					IDS Avg 3 4 3 3 3 12											
ID	Fresh	Milk	Peak	Lact	Repro	Service Sire	Sire	MGS	U	F	L	S	B	W	Comment	
327	Dry			2	Due	5/7	200JE1414	551JE1717	14JE648	3	4	3	3	3	12	
424	Dry			2	Due	4/16	200JE1345	250JE1834	7JE1151	3	3	3	3	3	12	
429	Dry			2	Due	4/23	200JE1345	551JE1766	7JE1344	3	5	3	3	3	12	
434	Dry			2	Due	4/23	200JE1345	7JE1822	614JE670							
51 4 Preg 2nd Lact Cows Due 7-18 to 9-30 JERSEY																
Avg 65 85 2					IDS Avg 4 3 4 3 3 11											
ID	Fresh	Milk	Peak	Lact	Repro	Service Sire	Sire	MGS	U	F	L	S	B	W	Comment	
345	3/9/05	64	87	2	Due	7/25	200JE1345	14JE1776	7JE1447	4	3	4	3	3	10	4★Udder
420	5/21/25	56	84	2	Due	7/18	200JE1425	250JE1834	7JE5011	3	3	4	3	3	12	
458	8/8/25	60	76	2	Due	8/1	200JE1345	7JE1814	507JE1471	4	3	4	3	2	10	4★Udder
459	8/1/25	78	94	2	Due	9/30	200JE1577	7JE1699	7HO12569	3	4	3	3	4	13	
52 7 JERSEYX Cows 3 Preg (Due 5-27 to 10-18), 4 Serviced (Fresh 11-13 to 12-23)																
Avg 80 86 2					IDS Avg 4 3 3 3 2 13											
ID	Fresh	Milk	Peak	Lact	Repro	Service Sire	Sire	MGS	U	F	L	S	B	W	Comment	
194	11/24/25	90	95	4	Bred	3/6	200JE1404	7HO14160	7HO11207	3	3	3	3	3	15	XBRED NFT
468	12/23/25	92	102	2	Bred	3/5	200HO12700	14HO15179	7HO12837	4	4	4	3	2	11	4★Udder
472	12/7/25	110	110	2	Bred	2/27	200JE1414	7HO15471	14JE762	4	4	3	3	2	13	4★Udder
575	7/14/25	80	84	1	Due	8/20	200HO13305	200HO11751	7HO12946	4	4	3	3	3	13	4★Udder
576	6/17/25	55	78	1	Due	5/27	200J1455	200J10061	507J1354	4	3	4	3	2	12	4★Udder
614	10/19/25	70	70	1	Due	####	200JE1414	200HO11783	507HO13607	3	3	3	3	2	13	
621	11/13/25	60	60	1	Bred	2/28	200JE1414	200JE1258	14JE1776	4	3	4	3	2	11	4★Udder
53 3 Serviced 3rd+ Lact Cows Fresh 10-15 to 11-5 JERSEY																
Avg 81 92 3					IDS Avg 3 4 4 3 3 11											
ID	Fresh	Milk	Peak	Lact	Repro	Service Sire	Sire	MGS	U	F	L	S	B	W	Comment	
202	10/24/25	71	86	4	Bred	3/15	200JE1414	7JE1528	507JE1294	3	4	3	4	3	11	
269	11/5/25	78	91	3	Bred	2/23	200JE1414	14JE1736	507JE1344	3	4	4	3	3	10	
366	10/15/25	94	97	3	Bred	2/21	200JE1414	551JE1765	7JE1344	3	4	4	3	3	11	
54 4 Serv/RTB Cows Fresh 9-7 to 12-25 🏠 JERSEY																
Avg 86 90 2					IDS Avg 3 3 3 3 2 10											
ID	Fresh	Milk	Peak	Lact	Repro	Service Sire	Sire	MGS	U	F	L	S	B	W	Comment	
279	9/7/25	74	92	3			7JE1736	507JE860	3	3	3	3	2	10	DU	
359	12/20/25	98	98	3			551JE1765	7JE1471	3	3	3	4	3	12	DU	
596	12/26/25	72	72	1	Bred	3/12	200JE1404	14JE2002	14JE1762	3	3	4	3	2	9	LLR
2248	10/30/25	98	98	7	Bred	3/15	200J1414	7JE1354	29JE3542	3	3	3	3	2	10	DU
55 4 Fresh 4th+ Lact Cows Fresh 12-25 to 2-14 JERSEY																
Avg 96 97 5					IDS Avg 3 3 4 3 2 12											
ID	Fresh	Milk	Peak	Lact	Repro	Service Sire	Sire	MGS	U	F	L	S	B	W	Comment	
57	1/11/26	119	119	5			14JE762	507HO11383	3	3	3	3	2	13		
173	2/14/26	90	90	4			14JE652	7JE1169	3	4	4	3	3	12		
2494	2/5/26	79	79	6			7JE1344	7JE859	3	3	4	3	2	12		
2703	12/25/25	97	99	6	Bred	3/1	200JE1414	7JE1540	507JE1332	3	3	4	3	2	11	

56 5 Preg 3rd+ Lact Cows | Due 6-13 to 8-8 | JERSEY

ID	Avg				Repro	Service Sire	Sire	IDS Avg						Comment		
	Fresh	Milk	Peak	Lact				MGS	U	F	L	S	B		W	
81	4/9/25	50	103	4	Due	6/23	200JE1404	14JE725	7JE1169	4	4	4	3	3	11	4★Udder
218	4/4/25	47	85	3	Due	6/13	200JE1404	7JE1529	14JE648	4	3	4	3	3	11	4★Udder
223	3/5/25	59	85	3	Due	6/23	200JE1404	7JE1529	507JE1350	3	4	3	3	3	12	
238	5/20/25	60	81	3	Due	8/8	200JE1575	7JE1699	7JE1332	3	4	4	4	3	10	
277	5/15/25	57	74	3	Due	6/19	200JE1404	14JE1736	7JE1221	3	3	3	3	3	11	

57 3 Preg 3rd Lact Cows | Due 9-19 to 11-13 | JERSEY

ID	Avg				Repro	Service Sire	Sire	IDS Avg						Comment		
	Fresh	Milk	Peak	Lact				MGS	U	F	L	S	B		W	
258	11/5/25	72	77	3	Due	####	200JE1577	7JE1699	7JE1000	3	2	3	4	5	10	SL-RR
326	10/20/25	93	93	3	Due	11/6	200JE1577	7JE1699	14JE762	3	3	4	4	2	11	DU
340	9/30/25	80	94	3	Due	9/19	200JE1577	14JE1762	14JE648	3	2	3	3	2	10	LIMP-LR

58 5 Preg 3rd Lact Cows | Due 9-26 to 11-12 | JERSEY

ID	Avg				Repro	Service Sire	Sire	IDS Avg						Comment		
	Fresh	Milk	Peak	Lact				MGS	U	F	L	S	B		W	
310	11/21/25	75	82	3	Due	11/3	200JE1577	14JE1776	507JE1447	5	4	4	3	2	9	4★Udder
311	12/7/25	88	95	3	Due	####	200JE1577	14JE1736	7JE1294	3	3	3	3	2	11	
325	9/23/25	71	82	3	Due	####	200JE1414	7JE1699	14JE758	4	3	3	5	3	10	4★Udder
334	10/12/25	53	72	3	Due	####	200JE1425	7JE1699	7JE1332	3	3	3	3	2	12	
335	10/15/25	66	70	3	Due	9/26	200JE1577	14JE1776	14JE652	3	3	4	3	3	10	

59 4 3rd+ Lact Dry Cows | Due 4-5 to 5-4 | JERSEY

ID	Avg				Repro	Service Sire	Sire	IDS Avg						Comment		
	Fresh	Milk	Peak	Lact				MGS	U	F	L	S	B		W	
183	Dry			3	Due	4/18	200JE1473	7JE1528	507JE869	3	3	4	3	3	13	
243	Dry			3	Due	4/7	200JE1404	7JE5004	7JE1344	3	3	4	2	3	13	
2230	Dry			7	Due	4/5	200JE1404	7JE1190	29JE3508	3	3	4	3	3	11	
2710	Dry			5	Due	5/4	200JE1404	14JE648	507JE860	3	3	4	4	3	14	

60 3/4 GROUP | 4 2nd+ Lact Cows | 1 Dry (Due 4-18), 3 (Fresh 11-14 to 2-12) | JERSEY

ID	Avg				Repro	Service Sire	Sire	IDS Avg						Comment		
	Fresh	Milk	Peak	Lact				MGS	U	F	L	S	B		W	
346	11/14/25	88	91	3	Bred	3/5	200JE1404			3	3	3	3	2	10	3/4-RR
408	Dry			2	Due	4/18	200JE1345	551JE1824	14JE742	3	4	3	3	3	12	3/4-LR
497	12/11/25	67	67	2	Bred	3/4	200JE1414	14JE1941	7JE1190	3	4	4	3	3	11	3/4-
500	2/12/26	78	78	2				551JE1741	7JE1634	3	3	4	3	2	11	3/4-LF

